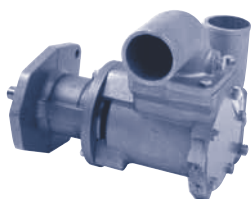


CATERPILLAR ENGINE PUMPS

- CONTENTS
- ENGINE COOLING
- INDEX
- HOME
- NEXT
- BACK

SHERWOOD 3406 / 3406C



G1804 / G1806 / G18061

CAT # 112-6177 (G1804)
CAT # 130-1160 / 201-0956 (G1806)

Part No.	Description	Qty
18000K	Impeller	1
19878	Mechanical Seal	1
23837	Upgrade Mechanical Seal	1
19866	Seal Washer	1
21561	Quad Ring Gasket	2
19837	End Cover	1
19626	Cover Screw	5
21533	Cam Liner	2
15944	Washers	13
19869	Oil Seal	1
19835	Oil Seal Washer	1
19871	Lg. Ball Bearing	1
19872	Sm. Ball Bearing	1
19870	Bearing Spacer	1
19867	Lg. Snap Ring	1
19762	Sm. Snap Ring	2
19836	Wearplate	1
21566	Wearplate Pin	1
19868	Slinger	1
21526	Shaft	1
21172	Body Bolt	3
21845	Port O-Ring (1806)	2

SHERWOOD 3412



G2201 / G22011 / G22012

CAT # 147-7850 / 212-7264

Part No.	Description	Qty
22000K	Impeller	1
23111	Quad-Ring	1
23087	Mechanical Seal	1
23058	Shaft	1
23089	Bearing	2
23090	Ext. Ret. Ring	1
23092	Spacer	1
23091	Int. Ret. Ring	1
23088	Lip Seal	1
23115	Ext. Ret. Ring	1
23112	Wearplate	1
21566	Pin	1
22453	Cam Liner	1
23113	Cover Plate	1
23211	Bolt	4
19626	Hex Head Bolt	5
15944	Lock Washer	9
23181	Gear	1
23194	Bolt	1
23195	Washer	1
23196	Washer	1
CAT 7W5648	Mounting Gasket	1

SHERWOOD 3406E



G1808 / G18081 / G18082

CAT # 131-8272 / 196-8895

Part No.	Description	Qty
18000K	Impeller	1
19878	Mech. Seal	1
23837	Upgrade Mechanical Seal	1
21561	Quad Ring Gasket	2
19837	End Cover	1
19626	Cover Screw	5
21533	Cam Liner	2
15944	Washers	5
23045	Oil Seal	1
19835	Oil Seal Washer	1
19871	Ball Bearing	2
19867	Lg. Snap Ring	1
19762	Sm. Snap Ring	2
19836	Wearplate	1
21566	Wearplate Pin	1
19868	Slinger	1
22782	Shaft	1
21172	Body Bolt	3
CAT 254080	Mounting Gasket	1

JABSCO 3406

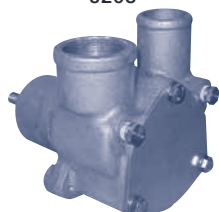


17350-0001 (Horizontal Ports) 17350-0011 (Vertical Ports)

CAT # 3N4851

Part No.	Description	Qty
17370-0001	Impeller	1
91005-0040	Cover Screw	6
17374-1000	Cam Ring	1
96080-0371	Mechanical Seal	1
18752-0000	Ball Bearing	2
17365-1000	Gasket	1
17378-1000	Cover	1
92701-0180	Bearing Seal	1
18721-0000	Seal Snap Ring	1
17372-1000	Wearplate	2
18725-0000	Bearing Snap Ring	1

SHERWOOD 3208



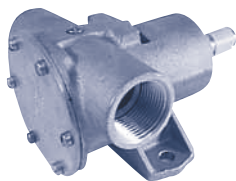
P176 (Old # P171)

CAT # 9Y1304 (P171)
CAT # 7E4115 (P176)

Part No.	Description	Qty
17000K	Impeller	1
15955	Seal	1
15951	Bearing	2
19626	Cover Screw	3
15940	Bearing Spacer	1
16045	Shaft (P-171)	1
19620	Shaft (P-176)	1
18271	Cam	1
15945	O-Ring	1
19673	Cam Screw	1
18742	Cover	1
18441	Wearplate	1
15952	Sm. Snap Ring	3
15942	Lg. Snap Ring	1
15948	Key (P-171)	1
19667	Key (P-176)	1
15959	Seal Washer	1

CAT Pulleys	Diameter	Pumps
CAT 2W4874	9"	6400 & 7420
CAT 7C3912	7"	P171 & P176
CAT 2W9084	7"	777

JABSCO 3208 / 3160



777-9001 (1" Ports)

CAT # 3N9009 / 2N3984

Part No.	Description	Qty
920-0001	Impeller, Neoprene	1
90118-0001	Kit - Mechanical Seal (Imp/Seal/Gasket)	1
890-0000	Gasket	1
11831-0000	End Cover	1
4156-0000	Wearplate	1
91003-0010	Screw (End Cover)	6
934-0000	Cam (Brass)	1
91004-0090	Screw (Cam)	1
798-0020	Body	1
913-0000	Bearing Seal (Inner)	1
92600-0060	Ball Bearing	1
18724-0000	Retaining Ring (Bearing to Body)	1
18713-0000	Retaining Ring (Bearing to Shaft)	1
914-0000	Bearing Seal (Outer)	1
96080-0080	Mechanical Seal	1
6718-0000	Shaft	1

The following are used on Lip Seal Versions:

3166-0000	Seal Spacer	1
92700-0060	Seal (Lip)	1
92000-0210	O-Ring	1
3180-0000	Slinger	1
6718-0000	Shaft	1

JABSCO 3208 / 3160

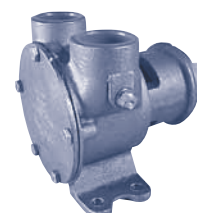


6400-1051 (1 1/4" Ports)

CAT # 1W9046 / 4L9070 / 4L1919

Part No.	Description	Qty
17935-0001	Impeller, Neoprene	1
90062-0001	Kit (Imp/Seal/Gasket)	1
12062-0000	End Cover	1
816-0000	Gasket for Full Thickness Cam	1
2553-0000	Gasket for Half Thickness Cam	1
2574-0000	Wearplate	1
91005-0040	Screw, End Cover	5
91005-0040	Screw, Cam for Full Thickness Cam	1
91005-0050	Screw, Cam for Half Thickness Cam	1
834-0001	Cam, (6400-0004)	1
2551-0000	Cam, (6400-1051)	1
3181-0000	Slinger	1
817-0000	Bearing Seal (Inner)	1
92600-0040	Ball Bearing	1
18712-0000	Retaining Ring (Bearing to Body)	1
18711-0000	Retaining Ring (Bearing to Shaft)	1
818-0000	Bearing Seal (Outer)	1
6407-0010	Seal Assembly	1
824-2001	Shaft (6400-1051)	1
824-0000	Shaft (6400-0004)	1
9214-0000	Key	1

JABSCO 3208 / 3160



7420-1001

CAT # 7W8019

Part No.	Description	Qty
17935-0001	Impeller, Neoprene	1
90062-0001	Kit (Imp/Seal/Gasket)	1
12062-0000	End Cover	1
816-0000	Gasket for Full Thickness Cam	1
2553-0000	Gasket for Half Thickness Cam	1
2574-0000	Wearplate	1
91005-0040	Screw, End Cover	5
91005-0040	Screw, Cam for Full Thickness Cam	1
91005-0050	Screw, Cam for Half Thickness Cam	1
834-0001	Cam	1
3181-0000	Slinger	1
817-0000	Bearing Seal (Inner)	1
92600-0040	Ball Bearing	1
18712-0000	Retaining Ring (Bearing to Body)	1
18711-0000	Retaining Ring (Bearing to Shaft)	1
818-0000	Bearing Seal (Outer)	1
6407-0010	Seal Assembly	1
824-2001	Shaft (7420-1001)	1
824-0000	Shaft (7420-0004)	1
9214-0000	Key	1