

CATERPILLAR ENGINE PUMPS

CONTENTS

ENGINE COOLING

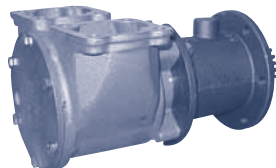
INDEX

HOME

NEXT

BACK

JABSCO D-336 / D-343 / D-353



17360-0001
CAT # 3N1888

Part No.	Description	Qty
17370-0001	Impeller	1
17365-1000	Gasket	1
91005-0040	Cover Screw	6
17374-1000	Cam Ring	1
96080-0371	Mechanical Seal	1
18754-1004	O-Ring	1
92701-0180	Bearing Seal	1
91402-0230	Key	1
DD 23501662	Mounting Gasket	1
18725-0000	Snap Ring	1
CAT 3N5692	Shaft	1
18752-0000	Ball Bearing	2
17372-1000	Wearplate	2
18721-0000	Seal Snap Ring	1
17378-1000	Cover	1
91112-0020	Pin (Wearplate)	1

SHERWOOD 3116



P172
CAT # 7E3268

Part No.	Description	Qty
17000K	Impeller	1
15955	Mechanical Seal	1
23799	Upgrade Mechanical Seal	1
15945	O-Ring	1
18742	End Cover	1
19626	Cover Screw	3
18693	Cam	1
19673	Cam Screw	1
15951	Ball Bearing	2
15950	Bearing Seal	1
15942	Lg. Snap Ring	1
15952	Sm. Snap Ring	3
18441	Wearplate	1
19620	Shaft	1
15948	Key	1
15940	Bearing Spacer	1
CAT 1359819	Mounting Gasket	1

SHERWOOD 3116



P1710X
CAT # 4P7168

Part No.	Description	Qty
17000K	Impeller	1
15955	Mechanical Seal	1
15945	O-ring	1
18742	End Cover	1
19626	Cover Screw	3
18271	Cam	1
19714	Cam Screw	1
15951	Ball Bearing	2
15942	Lg. Snap Ring	1
15952	Sm. Snap Ring	3
18441	Wearplate	1
19706	Shaft	1
19667	Key	1
21525	Flange O-Ring	2
21776	Bearing Seal	1
CAT 1359819	Mounting Gasket	1

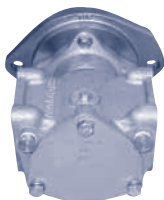
SHERWOOD 3116



P1710A
(Replaces P1710X)

Part No.	Description	Qty
17000K	Rubber Impeller	1
24505	Shaft	1
15952	Snap Ring (SM)	2
15942	Snap Ring (LG)	1
15951	Ball Bearing	2
24150	Spacer	1
15959	Seal Washer	1
24156	Slinger	1
23799	Mech Seal (Sil. Carb.)	1
19667	Key	1
24162	Pin/Plate Assy	1
19714	Cam Screw	1
19712	O-Ring	1
15945	O-Ring	1
18742	Cover Plate	1
19626	Cover Bolt	3
15944	Washer-Lock	3
339	Pipe Plug	2
19708	Flange Head Bolt	4
21776	Bearing Seal	1
18271	Cam	1
CAT 1359819	Mounting Gasket	1

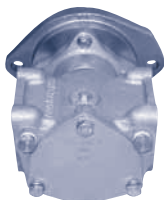
SHERWOOD 3126



P1726X
CAT # 113-1109 / 152-8392

Part No.	Description	Qty
17000K	Impeller	1
15955	Mechanical Seal	1
15945	O-Ring	1
18742	End Cover	1
19626	Cover Screw	3
18271	Cam	1
19714	Cam Screw	1
15951	Ball Bearing	2
21776	Bearing Seal	1
15942	Lg. Snap Ring	1
15952	Sm. Snap Ring	3
18441	Wearplate	1
19706	Shaft	1
19667	Key	1
21525	Flange O-Ring	1
21776	Bearing Seal	1
CAT 1359819	Mounting Gasket	1

SHERWOOD 3126



P1732A
(Replaces P1726X)

Part No.	Description	Qty
17000K	Rubber Impeller	1
24505	Shaft	1
15952	Snap Ring (SM)	2
15942	Snap Ring (LG)	1
15951	Ball Bearing	2
24150	Spacer	1
15959	Seal Washer	1
24156	Slinger	1
23799	Mech Seal (Sil. Carb.)	1
19667	Key	1
24162	Pin/Plate Assy	1
19714	Cam Screw	1
19712	O-Ring (Cam Screw)	1
21318	Cam	1
15945	O-Ring (Cover)	1
18742	Cover Plate	1
19626	Cover Bolt	3
15944	Washer-Lock	3
339	Pipe Plug	2
19708	Flange Head Bolt	4
21776	Bearing Seal	1
CAT 1359819	Mounting Gasket	1

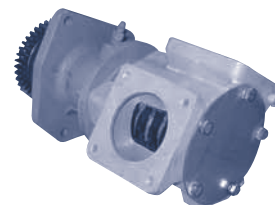
SHERWOOD 3176



G1801 / G1805
CAT # 100-6441 / 123-0500

Part No.	Description	Qty
18000K	Impeller	1
19878	Mechanical Seal	1
19866	Seal Washer	1
21561	Quad Ring Gasket	2
19837	End Cover	1
19626	Cover Screw	5
19829	Cam Liner (1801)	1
21106	Cam Liner (1805)	2
15944	Washers	13
19869	Oil Seal	1
19835	Oil Seal Washer	1
19871	Lg. Ball Bearing	1
19872	Sm. Ball Bearing	1
19870	Bearing Spacer	1
19867	Lg. Snap Ring	1
19762	Sm. Snap Ring	2
19836	Wearplate	1
21566	Wearplate Pin (1805)	1
19868	Slinger	1
19830	Shaft	1
21172	Body Bolt	3
21845	Port O-Ring (1805)	2
CAT 1006178	Mounting Gasket	1

SHERWOOD 3196



G1807 / G18071
CAT # 123-0471 / 197-1328

Part No.	Description	Qty
18000K	Impeller	1
19878	Mechanical Seal	1
23837	Upgrade Mechanical Seal	1
19866	Seal Washer	1
21561	Quad Ring Gasket	2
19837	End Cover	1
19626	Cover Screw	5
21106	Cam Liner	2
15944	Washers	13
19869	Oil Seal	1
19835	Oil Seal Washer	1
19871	Lg. Ball Bearing	1
19872	Sm. Ball Bearing	1
19870	Bearing Spacer	1
19867	Lg. Snap Ring	1
19762	Sm. Snap Ring	2
19836	Wearplate	1
21566	Wearplate Pin	1
19868	Slinger	1
21526	Shaft	1
21172	Body Bolt	3
21845	Port O-Ring	2
CAT 1006178	Mounting Gasket	1