

CONTENTS

PUMPING PRINCIPLES

ENGINE COOLING

ENGINEERING TABLES

TROUBLE-SHOOTING GUIDE

INDEX

HOME

NEXT

BACK

JABSCO V903 / VT903



12600-0001

Cummins # 160596 / 162209

Part #	Description	Qty
836-0001	Impeller	1
6408-0000	Mechanical Seal	1
12608-0000	Gasket	1
12179-0000	End Cover	1
91005-0060	Cover Screw	5
12176-0000	Cam Liner	1
12606-0000	Wearplate	1
92600-0040	Ball Bearing	1
817-0000	Bearing Seal	1
18712-0000	Brg Snap Ring	1
3181-0000	Slinger	1
12607-0000	Shaft	1
12595-0000	Drive Gear	1

JABSCO VT902

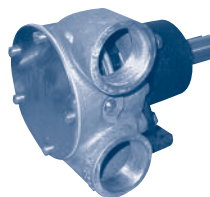


18200-0001

Cummins # 217308

Part #	Description	Qty
17370-0001	Impeller	1
96080-0371	Mechanical Seal	1
18721-0000	Seal Snap Ring	1
17365-1000	Gasket	1
17378-1000	End Cover	1
91005-0040	Cover Screw	6
17374-1000	Cam Liner	1
17372-1000	Wearplate	2
3181-0000	Slinger	1
DD 519BRG	Ball Bearing	1
817-0000	Bearing Seal	1
18718-0000	Brg Snap Ring	1
18754-1004	O-Ring	1
18204-0000	Shaft	1

JABSCO V555M / VT555M

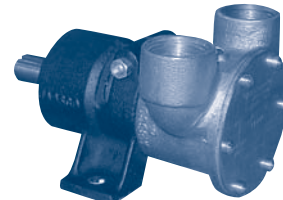


21680-05

Cummins # 556850

Part #	Description	Qty
17935-0001	Impeller	1
816-0000	Gasket	1
6408-0000	Mechanical Seal	1
2551-0000	Cam	1
91005-0050	Cam Screw	1
12062-0000	End Cover	1
91005-0040	Cover Screw	5
2574-0000	Wearplate	1
92600-0040	Ball Bearing	1
817-0000	Inner Bearing Seal	1
818-0000	Outer Bearing Seal	1
18711-0000	Snap Ring (Sm)	1
18712-0000	Snap Ring (Lg)	1
9527	Shaft	1

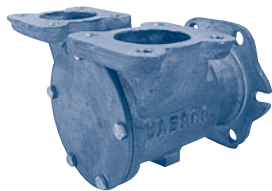
JABSCO V504 / V504M



11600

Part #	Description	Qty
17937-0001	Impeller	1
18753-0049	Mechanical Seal	1
890-0000	Gasket	1
934-0000	Cam	1
91004-0090	Cam Screw	1
11831-0000	End Cover	1
91003-0010	Cover Screw	6
4156-0000	Wearplate	1
11608	Shaft	1
914-0000	Outer Bearing Seal	1
SP92701-0940	Inner Bearing Seal	1
SP2601-42	Ball Bearing	1

JABSCO NH250M



3570

Cummins # 21731 / 180128

Part #	Description	Qty
836-0001	Impeller	1
816-0000	Gasket	1
6408-0000	Mechanical Seal	1
3181-0000	Slinger	1
92600-0040	Ball Bearing	1
92700-0280	Inner Bearing Seal	1
818-0000	Outer Bearing Seal	1
7257-0000	Cam & Wearplate	1
91005-0040	Cam Screw	1
2574-0000	Wearplate Only	1
12062-0000	End Cover	1
91005-0040	Cover Screw	5
18711-0000	Snap Ring (SM)	1
18712-0000	Snap Ring (LG)	1

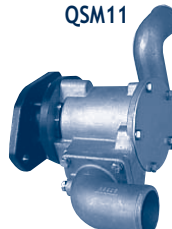
JABSCO VT55MBC / VT555MBC / NT855M



7420-0101

Part #	Description	Qty
17935-0001	Impeller	1
816-0000	Gasket	1
6407-0010	Mechanical Seal	1
834-0000	Cam	1
91005-0040	Cam Screw	1
2574-0000	Wearplate	1
12062-0000	End Cover	1
91005-0040	Cover Screws	5
92600-0040	Ball Bearing	1
817-0000	Inner Bearing Seal	1
818-0000	Outer Bearings Seal	2
18711-0000	Snap Ring (SM)	1
18712-0000	Snap Ring (LG)	1
3181-0000	Slinger	1
9527	Shaft	1

SHERWOOD QSM11

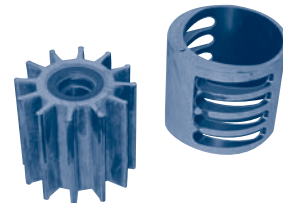


G1810 (Old # G1809)

Cummins # 3349392

Part #	Description	Qty
18000K	Impeller	1
23512	Mechanical Seal	1
23272	Shaft	1
23489	Ball Bearing	2
19869	Bearing Seal	1
23387	Bearing Spacer	1
23425	Bearing Shield	1
19836	Wearplate	1
19837	End Cover	1
19626	Cover Screw	5
21561	Quad Ring	2
21106	Cam Liner (G1810)	2
21533	Cam Liner (G1809)	2
19867	Snap Ring (LG)	1
19762	Snap Ring (SM)	2
21566	Pin	1
15944	Lockwasher	13

CUMMINS



Impeller Cross-Reference

Impeller Cross-Reference

Cummins Part #	Depco Part #
160596	JA 836-0001
166758	JA 836-0001
217308	JA 17370-0001
556540	JA 836-0001
556850	JA 836-0001
650607	JA 920-0001
3008503	JA 17370-0001
3008505	JA 17374-1000
4019403	SH 18000K
21601R	JA 836-0001
3349198	SH 15000K
3802444	SH 17000K
3897337*	SH 17000K
3908220*	SH 10615K
3916720*	SH 15000K
3916852*	SH 17000K
3925236*	SH 17000K
CO1320292	SH 10615K
CO1320348	SH 10615K
Impeller Puller	page 149

* These Cummins kits include additional parts. Our number references only the impeller.