

# CUMMINS ENGINE PUMPS

## SHERWOOD

4B / 4 Cylinder / 210 HP



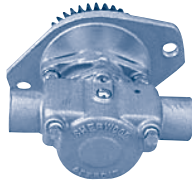
### M-71 (Old # M-70)

Cummins # 3907458 (M-71)  
Cummins # 3912019 (M-70)

Part #	Description	Qty
10615K	Impeller	1
14159	Shaft	1
12859	Seal Assy	1
12211	Ball Bearing	2
10944	Cam	1
10515C	Cam Screw	1
12855	Gasket	1
12231	O-Ring	1
12856	Wearplate	1
12857	Cover Screw	3
12710	Lock Washer	3
4432	Key	1
4258	Snap Ring (SM)	2
4259	Snap Ring (LG)	2
14184	Gear	1
5133	Bearing Spacer	1
12710	3/8" Lock Washer	3
12857	3/8" Cap Screw	3
12228	Impeller Hrg	1
10514C	Oil Seal	1

## SHERWOOD

6B Series - 250 HP



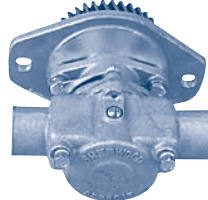
### GC1

Cummins # 3912962

Part #	Description	Qty
15000K	Impeller	1
21069	Shaft	1
4258	Snap Ring (SM)	2
4259	Snap Ring (LG)	2
4432	Key	1
12859	Seal Assy	1
10514C	Oil Seal	1
12211	Ball Bearing	2
18398	Cam	1
12855	Gasket	1
12231	O-Ring	1
12857	Cover Screw	3
12710	Washer	3
10515C	Cam Screw	1
4264	Seal Washer	1
12856	Wearplate	1
14184	Gear	1
5133	Bearing Spacer	1
12710	3/8" Lock Washer	3
12857	3/8" Cap Screw	3

## SHERWOOD

6B Series - 250 HP - 4B CEPC



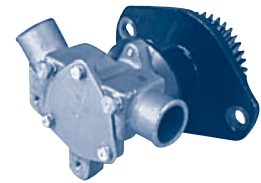
### GC5 (Old # GC4)

Cummins # 3920298 (GC4)  
Cummins # 3927684 (GC5)

Part #	Description	Qty
15000K	Impeller	1
21069	Shaft (GC4)	1
19843	Shaft (GC5)	1
4258	Snap Ring (SM)	2
4259	Snap Ring (LG)	2
4432	Key	1
12859	Seal Assy	1
10514C	Oil Seal	1
12211	Ball Bearing	2
18398	Cam	1
12855	Gasket	1
12231	O-Ring	1
12857	Cover Screw	3
12710	Washer	3
10515C	Cam Screw	1
4264	Seal Washer	1
12856	Wearplate	1
14184	Gear (GC1/GC4)	1
19884	Gear (GC5)	1
5133	Bearing Spacer	1

## SHERWOOD

4B Series - 250 HP



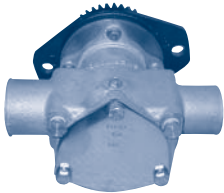
### G1503 (Old # 1501)

Cummins # 3393854 (G1501)  
Cummins # 3349340 (G1503)

Part #	Description	Qty
15000K	Impeller	1
12859	Water & Oil Seal	2
12966	Oil Seal (1503 only)	2
4264	Seal Washer	1
12231	O-ring	1
12211	Ball Bearing	2
22812	Spacer (1501)	1
23229	Spacer (1503)	1
22836	Wearplate	1
4432	Key	1
21173	End Cover	1
1482	Cover Screw	3
12710	Lock Washer	3
12857	Body Bolt	3
4258	Snap Ring (SM)	2
4259	Snap Ring (LG)	1
22813	Shaft (1501)	1
23228	Shaft (1503)	1
19883	Shaft Nut	1
22495	Gear (1501)	1
22494	Gear (1503)	1
19998	Gear Insert	1

## SHERWOOD

6B Series - 300 HP



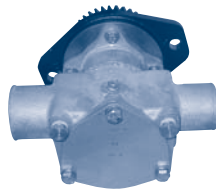
### P1716X (Old # P1712)

Cummins # 3919899 (P1712)  
Cummins # 3922590 (P1716X)

Part #	Description	Qty
17000K	Impeller	1
16046	Shaft (P1712)	1
19616	Shaft (P1716)	1
15952	Snap Ring (SM)	3
15942	Snap Ring (LG)	1
18271	Cam	1
10515C	Cam Screw	1
18441	Wearplate	1
16029	Cover Screw	3
15944	Lock Washer	3
15945	O-Ring for Cover	1
15955	Mechanical Seal	1
18742	Cover Plate	1
15951	Ball Bearing	2
19674	Bearing Lip Seal	1
19667	Key (Other Models)	1
14184	Gear (1712)	1
19885	Gear (1716)	1
11339	Drain Plug	2
15959	Seal Washer	1

## SHERWOOD

6C Series



### P1722X (Old # P173)

Cummins # 3912139 (P173)  
Cummins # 3922589 (P1722X)

Part #	Description	Qty
17000K	Impeller	1
16046	Shaft (P173)	1
19616	Shaft (P1722)	1
15952	Snap Ring (SM)	3
15942	Snap Ring (LG) (P173)	1
18271	Cam	1
10515C	Cam Screw	1
18441	Wearplate	1
16029	Cover Screw	3
15944	Lock Washer	3
15945	O-Ring for Cover	1
15955	Mechanical Seal	1
18742	Cover Plate	1
15951	Ball Bearing	2
19674	Bearing Lip Seal	1
15948	Impeller Key (P173)	1
19667	Key (Other Models)	1
14184	Gear (173)	1
19885	Gear (1722)	1
11339	Drain Plug	2
15959	Seal Washer	1

## SHERWOOD

6C Series - Flanged Ports



### P1727X

Cummins # 3897194

Part #	Description	Qty
17000K	Impeller	1
19616	Shaft	1
15952	Snap Ring (SM)	3
15942	Snap Ring (LG)	1
18271	Cam	1
19714	Cam Screw	1
18441	Wearplate	1
16029	Cover Screw	3
15944	Lock Washer	3
15945	O-Ring for Cover	1
15955	Mechanical Seal	1
18742	Cover Plate	1
15951	Ball Bearing	2
19674	Bearing Lip Seal	1
19667	Key	1
19885	Gear	1
11339	Drain Plug	2
15959	Seal Washer	1
21525	Flange O-Ring	1
19615	Bearing Spacer	1

## SHERWOOD

6C Series - Flanged Ports



### P1730X

Cummins # 3866493 / #4003526

Part #	Description	Qty
17000K	Impeller	1
19616	Shaft	1
15952	Snap Ring (SM)	3
15942	Snap Ring (LG)	1
18271	Cam	1
19714	Cam Screw	1
18441	Wearplate	1
16029	Cover Screw	3
15944	Lock Washer	3
15945	O-Ring for Cover	1
15955	Mechanical Seal	1
18742	Cover Plate	1
15951	Ball Bearing	2
19674	Bearing Lip Seal	1
19667	Key	1
22495	Gear	1
11339	Drain Plug	2
15959	Seal Washer	1
21525	Flange O-Ring	1
19615	Bearing Spacer	1

CONTENTS

PUMPING PRINCIPLES

ENGINE COOLING

ENGINEERING TABLES

TROUBLE-SHOOTING GUIDE

INDEX

HOME

NEXT

BACK