

DETROIT DIESEL / JOHN DEERE PUMPS

CONTENTS

PUMPING PRINCIPLES

ENGINE COOLING

ENGINEERING TABLES

TROUBLE-SHOOTING GUIDE

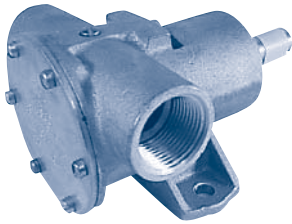
INDEX

HOME

NEXT

BACK

JABSCO Detroit Diesel 8.2



777

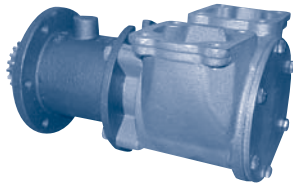
Detroit Diesel # 8924483

Part No.	Description	Qty
920-0001	Impeller, Neoprene	1
90010-0001	Kit - Lip Seal (Imp/seal/gasket)	1
90118-0001	Kit - Mech Seal (Imp/Seal/Gasket)	1
11831-0000	End Cover	1
890-0000	Gasket	1
4156-0000	Wearplate	1
91003-0010	Screw (End Cover)	6
934-0000	Cam (Brass)	1
91004-0090	Screw (Cam)	1
798-0020	Body	1
913-0000	Bearing Seal (Inner)	1
92600-0060	Ball Bearing	1
18724-0000	Retaining Ring (Bearing to Body)	1
18713-0000	Retaining Ring (Bearing to Shaft)	1
914-0000	Bearing Seal (Outer)	1
96080-0080	Mechanical Seal	1
6718-0000	Shaft	1

The following are used on Lip Seal Versions:

3166-0000	Seal Spacer	1
92700-0060	Seal (Lip)	1
92000-0210	O-ring	1
3180-0000	Slinger	1

JABSCO 671TI / 871 / 1271

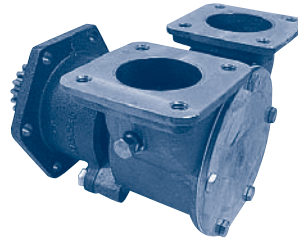


17360-1001

Detroit Diesel

Part No.	Description	Qty
17370-0001	Impeller	1
17365-1000	Gasket	1
91005-0040	Cover Screw	6
17374-1000	Cam Ring	1
96080-0371	Mechanical Seal	1
18754-1004	O-ring	1
92701-0180	Bearing Seal	1
91402-0230	Key	1
DD 23501662	Mounting Gasket	1
18725-0000	Snap Ring	1
17366-1000	Shaft	1
18752-0000	Ball Bearing	2
17372-1000	Wearplate	2
18721-0000	Seal Snap Ring	1
17378-1000	Cover	1
91112-0020	Pin (Wearplate)	1

JOHNSON 653 / 671 / 853

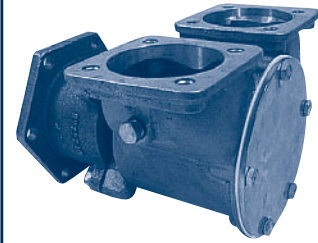


10-13096-02

Detroit Diesel

Part No.	Description	Qty
819B	Impeller	1
09-20-118	Mechanical Seal	1
05-34-108	Seal Snap Ring	1
01-42424	Gasket	1
01-42422-1	End Cover	1
05-04-46	Cover Screw	5
01-42680	Cam	1
05-04-108	Cam Screw	1
01-42423	Wearplate	1
01-42426	Wearplate Pin	1
05-08-505	Ball Bearing	1
05-29-517	Bearing Seal	1
05-34-502	Brg Snap Ring	1
05-04-128	Body Bolt	4
01-42427-15	Slinger	1
01-35212	Shaft	1
01-46352	Drive Key	1
05-01-521	Shaft Washer	1
05-05-513	Shaft Nut	1
01-35320	Drive Gear	1

JOHNSON 671TI / 871 / 1271

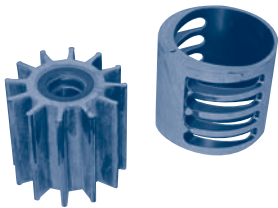


10-13095-02

Detroit Diesel

Part No.	Description	Qty
814B	Impeller	1
09-20-118	Mechanical Seal	1
05-34-108	Seal Snap Ring	1
01-42424	Gasket	1
01-42422-1	End Cover	1
05-04-46	Cover Screw	5
01-43137	Cam	1
05-04-108	Cam Screw	1
01-42423	Wearplate	1
01-42426	Wearplate Pin	1
05-08-505	Ball Bearing	1
05-29-517	Bearing Seal	1
05-34-502	Brg Snap Ring	1
05-04-128	Body Bolt	4
01-42427-15	Slinger	1
01-35212	Shaft	1
01-46352	Drive Key	1
05-01-521	Shaft Washer	1
05-05-513	Shaft Nut	1
01-35320	Drive Gear	1

DETROIT DIESEL

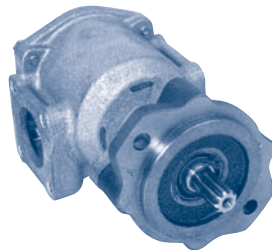


Impellers and Cams

Impeller Cross Reference

Detroit Diesel Part #	Depco Part #
5193553	JA 836-0001
5193602	JA 920-0001
5194205	JA 1210-0001
5196168	JA 17936-0001
5196628	JA 17935-0001
5196629	JA 1210-0001
5198550	JA 17936-0001
5199148	JA 920-0001
8924838	JA 17935-0001
8924839	JA 17936-0001
8927570	JA 17370-0001
8927571	JA 17374-1000
23502086	JA 18786-0001
23502089	JA 18785-0000
Impeller Puller	Page 149

SHERWOOD JOHN DEERE

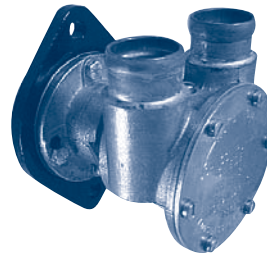


P1719 (Old # P1711)

John Deere #RE 45459 & # RE45458

Part No.	Description	Qty
17000K	Impeller	1
15955	Mechanical Seal	1
15945	Cover O-ring	1
18742	End Cover	1
19626	Cover Screw	3
15944	Lock Washer	3
15951	Ball Bearing	2
19615	Bearing Spacer	1
19674	Lip Seal	1
18271	Cam	1
19714	Cam Screw	1
18441	Wearplate	1
18442	Wearplate Pin	1
19209	Key (1711)	1
19667	Key (1719)	1
19712	Slinger (1719)	1
15952	Snap Ring	3
19345	Shaft	1
19614	Washer	2
15959	Washer	1

JOHNSON JOHN DEERE

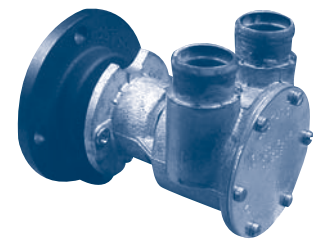


10-24398-01

John Deere # RE47016

Part No.	Description	Qty
1028B	Impeller	1
05-29-105	Lip Seal	2
01-45181	Seal Spacer	1
01-42445	Gasket	1
01-42441	End Cover	1
05-04-174	Cover Screw	6
01-42679	Cam	1
05-04-107	Cam Screw	1
05-06-501	Slinger O-ring	1
05-08-128	Ball Bearing	2
01-35670	Shaft	1
01-35213-2	Mounting Flange	1
01-45754	Pump Flange Gasket	1
05-34-21	Sm. Snap Ring	1
05-34-105	Sm. Snap Ring	1
05-34-130	Lg. Snap Ring	1

JOHNSON JOHN DEERE



10-24428-01

John Deere # RE49556

Part No.	Description	Qty
1028B	Impeller	1
05-29-105	Lip Seal	2
01-45181	Seal Spacer	1
01-42445	Gasket	1
01-42441	End Cover	1
05-04-174	Cover Screw	6
01-42679	Cam	1
05-04-107	Cam Screw	1
05-06-501	Slinger O-ring	1
05-08-128	Ball Bearing	2
01-45044	Shaft	1

John Deere Impeller Cross Reference

John Deere Part #	Depco Part #
RE 49896	SH 17000K