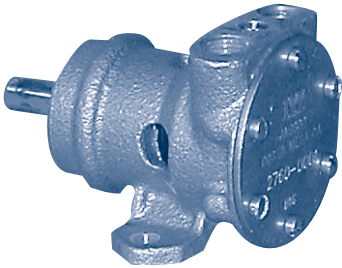


GENERAL PURPOSE ENGINE COOLING

JABSCO



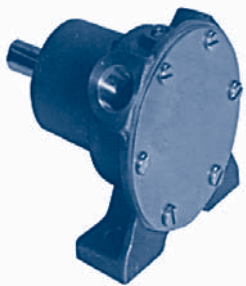
2760 Series

1/4" PORTS, UP TO 7 GPM, BALL BEARING DESIGN

The 2760-0001 1/4" pedestal pump is a compact (2 7/16" high x 2 5/8" wide x 3 9/16" long) double race ball bearing flexible impeller pump with a 3/8" diameter stainless steel shaft. Its small size and vertical ports allow it to fit in the most confined mounting locations. Standard replacement impeller: JA 4528-0001. See page 106 for service parts.

Discharge Head in Feet	Gallons Per Minute at RPM						
	500	1160	1750	2100	2450*	3000*	3600*
10	1.2	2.6	3.9	4.6	5.2	6.1	6.9
20	1.1	2.4	3.6	4.3	4.8	5.6	6.5
30	0.8	2.1	3.1	3.8	4.2	5.1	5.9
40	-	1.7	2.6	3.2	3.7	4.5	5.2
50	-	-	-	2.5	3.0	3.8	4.5

JABSCO



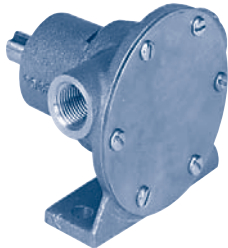
2620 Series

3/8" PORTS, UP TO 11 GPM, BALL BEARING DESIGN

The 2620-1001 double ball bearing pump combines a short mount (3 9/32" high x 3 1/8" wide x 3 15/16" long) with a respectable flow of up to 11.3 gpm. It has angled 3/8" ports and a 1/2" stainless steel shaft. Standard replacement impeller: JA 18673-0001. See page 104 for service parts.

Discharge Head in Feet	Gallons Per Minute at RPM						
	500	1160	1750	2100	2450	3000*	3600*
10	1.6	3.5	5.8	6.7	7.5	9.4	11.3
20	1.0	2.6	5.0	5.8	6.6	8.4	10.4
30	-	-	3.8	4.6	5.3	7.2	9.1
40	-	-	-	-	-	5.6	7.7
50	-	-	-	-	-	-	-

JABSCO



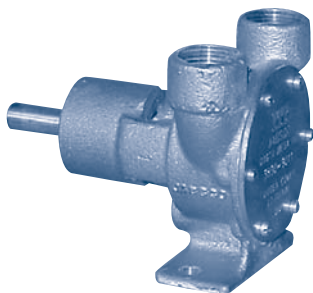
1673 Series

1/2" PORTS, UP TO 20 GPM, BALL BEARING DESIGN

The 1673 series pedestal pump is a sturdy (3 13/16" high x 4 1/8" wide x 4 7/16" long) double ball bearing flexible impeller pump with a 5/8" diameter stainless steel shaft. It has horizontal 1/2" ports, a lip or mechanical water seal and the choice of two cam sizes to deliver varied flows. Standard replacement impeller: JA 1210-0001. (See page 104 for service parts.)

Discharge Head in Feet	Gallons Per Minute at RPM with Full Cam						Gallons Per Minute at RPM with Half Cam					
	500	1160	1750	2100	2450*	3600*	500	1160	1750	2100	2450*	3600*
10	3.0	7.6	11.0	13.0	15.2	19.6	1.6	4.1	6.3	7.7	9.0	13.1
20	-	6.4	10.0	11.5	13.7	18.8	1.2	3.6	5.8	7.0	8.4	12.3
30	-	4.8	8.5	10.0	12.0	17.5	-	3.1	5.0	6.2	7.6	11.3
40	-	3.3	6.7	8.5	10.4	16.0	-	2.4	4.1	5.3	6.7	10.3
50	-	-	5.0	6.7	8.5	14.5	-	-	3.0	4.2	5.7	9.2
60	-	-	-	5.0	7.0	13.0	-	-	-	-	4.5	8.1
70	-	-	-	-	-	11.0	-	-	-	-	-	-

JABSCO



3890 Series

3/4" PORTS, UP TO 20 GPM, BALL BEARING DESIGN

The 3890-9011 pedestal pump is the 3/4" vertical port version of the 1673 shown above. Its flow curve matches the full cam version of the 1673 and fits in an envelope of 4" high x 4" wide x 5 3/16" long. The 3890-9011 has a double race ball bearing, mechanical seal, and a 1/2" drive shaft. Standard replacement impeller: JA 1210-0001. See page 130 for service parts.

Discharge Head in Feet	Gallons Per Minute at RPM with Full Cam					
	500	1160	1750	2100	2450*	3600*
10	3.0	7.6	11.0	13.0	15.2	19.6
20	-	6.4	10.0	11.5	13.7	18.8
30	-	4.8	8.5	10.0	12.0	17.5
40	-	3.3	6.7	8.5	10.4	16.0
50	-	-	5.0	6.7	8.5	14.5
60	-	-	-	5.0	7.0	13.0
70	-	-	-	-	-	11.0

* Only intermittent operation recommended at these speeds.

CONTENTS

PUMPING PRINCIPLES

ENGINE COOLING

ENGINEERING TABLES

TROUBLE-SHOOTING GUIDE

INDEX

HOME

NEXT

BACK