

AIR CONDITIONING PUMPS

CONTENTS

PUMPING PRINCIPLES

ENGINE COOLING

ENGINEERING TABLES

TROUBLE-SHOOTING GUIDE

INDEX

HOME

NEXT

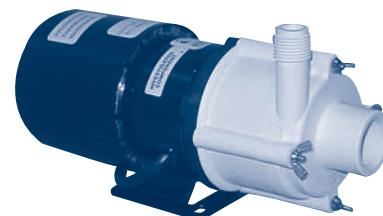
BACK

LITTLE GIANT PUMPS FOR MARINE AIR P510 AND P310

Marine Air #P510 & PMA500 (3MD-SC / 500 GPH up to 24,000 BTU)
Marine Air #P310 (5MD-SC / 1000 GPH up to 48,000 BTU)

Model Number	Volts	HP	Cycle	GPH at Feet of Head			Max. Head	Ports	
				1'	3'	6'		Inlet	Outlet
LG 3MD-SC 115V	115 vac	1/12	60	750	710	665	22'	3/4" FPT	1/2" MPT
LG 3MD-SC 230V	230 vac	1/12	60	750	710	665	22'	3/4" FPT	1/2" MPT
LG 5MD-SC 115V	115 vac	1/8	60	1050	990	920	27'	1" FPT	1/2" MPT
LG 5MD-SC 230V	230 vac	1/8	50/60	1050	990	920	27'	1" FPT	1/2" MPT

LITTLE GIANT



CAL MARINE FOR MARINE AIR, CRUISAIR AND MORE

Marine Air #PC400 & PDA250 = CA MS-320B / #PC500 & PDA500 = CA MS-580B
Cruisair #PDS250 = CA MS-320B / #PDS400 = CA MS-430B / #PDS500 = CA MS-580B
#PDS900 = CA MS-900B (suffix "C" after Cruisair numbers denotes 230vac)
Mermaid = CA MS 430B

Model Number	HP	Voltages Available	1'	GPH at Feet of Head			Max. Head	Ports	
				3'	5'	9'		13'	Inlet
CA MS-1200(B)	1/9	115 or 230 vac	1200	980	840	660	540	20'	3/4" MPT 1/2" MPT
CA MS-900(B)	1/12	115 or 230 vac	900	720	620	425	390	17'	3/4" MPT 1/2" MPT
CA MS-580(B)	1/15	115 or 230 vac	580	425	390	320	260	15'	3/4" MPT 1/2" MPT
CA MS-430(B)	1/40	115 vac	430	370	300	250	200	16'	1/2" MPT 3/8" MPT
CA MS-320(B)	1/40	115 vac	320	260	200	140	-	12'	1/2" MPT 1/4" MPT

CAL



SHURFLO IGNITION PROTECTED MAGNETIC DRIVE

The Shurflo 1600 series utilizes a state-of-the-art electronic drive that has no moving parts except the impeller! It is submersible to 5 feet and has run dry, thermal overload, and ignition protection. Must be mounted below the waterline with a flooded suction.

Model Number	Volts	Amps	GPH at Feet of Head			Max. Head	Ports	
			1'	3'	5'		Inlet	Outlet
SF 1600-201-00	115 vac	1.5	570	522	492	17.5'	3/4" MPT	1/2" MPT

SHURFLO

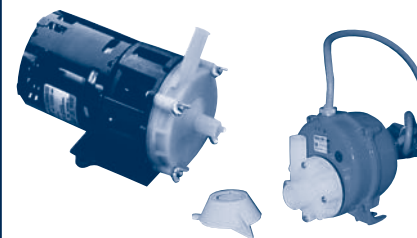


KING AIR AND MERMAID REPLACEMENT PUMPS

The most common King Air coolant pump is the March magnetic drive model MDX-3 5/8". This pump has an open motor and requires flooded suction. Mermaid often utilizes the Proven oil-filled centrifugal model B500. Its unique shape and bright red motor housing makes it easy to recognize. Both of these pumps can be upgraded to longer life models. Call us for details.

Model Number	Volts	Watts	Amps	GPH at Feet of Head			Max. Head	Ports	
				1'	3'	6'		Inlet	Outlet
MA MDX-3 5/8	115 vac	108	1.35	510	480	420	19'	5/8" OD	5/8" OD
PR B500	115 vac	75	1.50	500	360	300	11'	3/4" GHT	3/8" MPT

MARCH AND PROVEN



SCOT PUMPS FOR MARINE AIR

Scot bronze centrifugal pumps are used as standard equipment on many of the larger "Marine Air" brand air conditioning systems. Service parts are available for all models.

Model Number	Marine Air Part Number	Volts	Hz.	HP	GPH at Feet of Head			Max. Head	Ports	
					10'	20'	30'		Inlet	Outlet
SC 67	P700	115/230 vac	50/60	1/3	2400	2160	1800	51'	1 1/4" FPT	1" FPT
SC 67 - 3.00	P120	115/230 vac	50/60	1/3	1620	1200	570	36'	1 1/4" FPT	1" FPT
SC 67 - 2.5	P100	115/230 vac	50/60	1/3	1140	450	-	25'	1 1/4" FPT	1" FPT
SC 78 - 3/4.41	P710	115/230 vac	50/60	1/2	3000	2820	2160	61'	1 1/2" FPT	1 1/2" FPT
SC 78 - 10/4.75	P711	115/230 vac	50/60	1	4700	4620	4020	84'	1 1/2" FPT	1 1/2" FPT

SCOT



* For below waterline installations