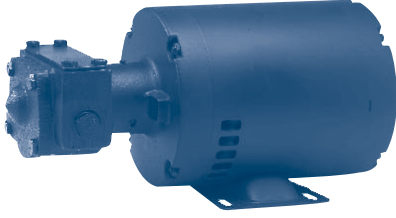
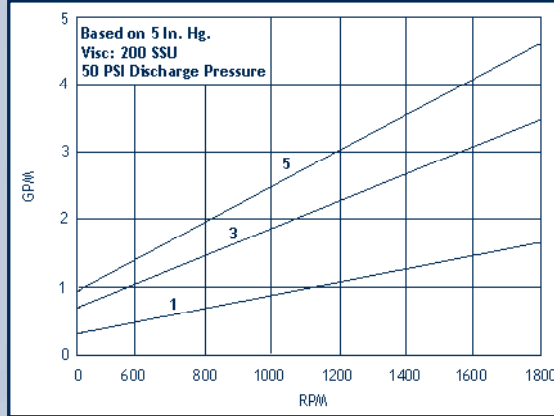


CAST IRON GEAR PUMPS

HAIGHT



U Series - (Hub Mount Shown)



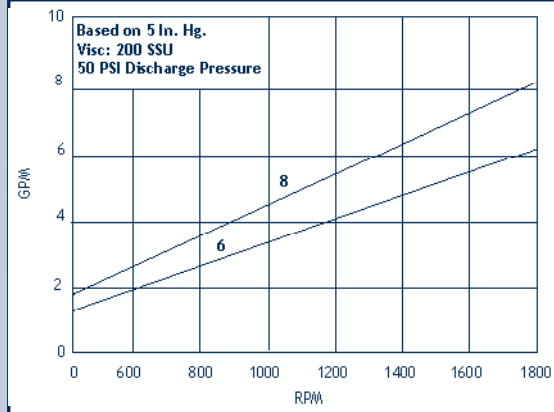
UP TO 5 GPM, 150 PSI

- Temperatures to 650° F
- Lubricating or non-lubricating liquids
- High viscosities handled at direct drive motor speeds
- Ductile iron body, several rotor and bushing material choices
- Lip seal, mechanical seal or packing
- Close coupled or foot mounting options

HAIGHT



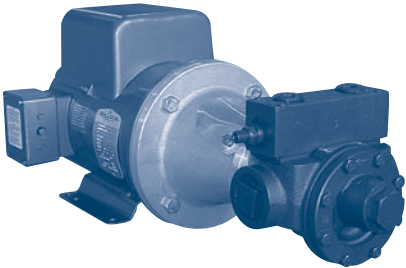
U Series - (C-Face Mount Shown)



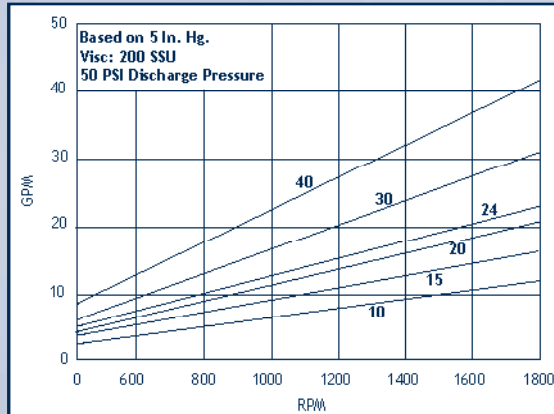
UP TO 8 GPM, 150 PSI

- Temperatures to 650° F
- Lubricating or non-lubricating liquids
- High viscosities handled at direct drive motor speeds
- Ductile iron body, several rotor and bushing material choices
- Lip seal, mechanical seal or packing
- Close coupled or foot mounting options

HAIGHT



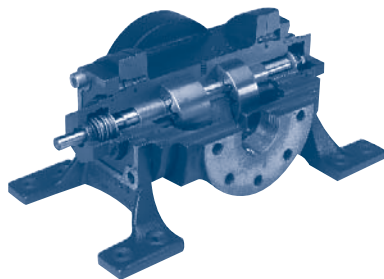
U Series - Square Flange



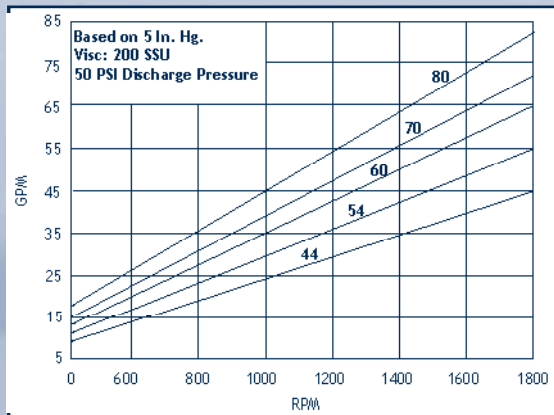
UP TO 40 GPM, 150 PSI

- Temperatures to 650° F
- Lubricating or non-lubricating liquids
- High viscosities handled at direct drive motor speeds
- Ductile iron body, several rotor and bushing material choices
- Lip seal, mechanical seal or packing
- Close coupled or foot mounting options

HAIGHT



D Series - Double Pumps



UP TO 80 GPM, 150 PSI

- Temperatures to 650° F
- Lubricating or non-lubricating liquids
- High viscosities handled at direct drive motor speeds
- Ductile iron body, several rotor and bushing material choices
- Lip seal, mechanical seal or packing
- Close coupled or foot mounting options

CONTENTS

PUMPING PRINCIPLES

ENGINE COOLING

ENGINEERING TABLES

TROUBLE-SHOOTING GUIDE

INDEX

HOME

NEXT

BACK