

# BRONZE CLOSE-COUPLED GEAR

**CONTENTS**

**PUMPING PRINCIPLES**

**ENGINE COOLING**

**ENGINEERING TABLES**

**TROUBLE-SHOOTING GUIDE**

**INDEX**

**HOME**

**NEXT**

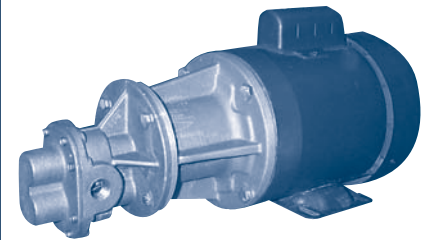
**BACK**

## UP TO 10.5 GPM, 100 PSI (150 PSI Intermittent)

- Bronze housing
- Seal Options: Buna or Viton® lip seal
- Available with or without relief valve in single and three phase, 50 and 60 Hz, 12 and 24 vdc, IEEE-45 enclosure and custom configurations that meet MCA, Lloyds, ABS, and USCG specs
- See Page 84, N4000 series for foot mount version

R.P.M.	FT.HD.								
		0	46	92	138	184	231	290	346
	P.S.I.	0	20	40	60	80	100	125*	150*
400	GPM	2.30	2.00	1.75	1.55	1.30	1.10	0.85	0.65
	HP	0.10	0.15	0.20	0.25	0.32	0.40	0.53	0.70
600	GPM	3.45	3.20	2.95	2.75	2.50	2.30	2.07	2.17
	HP	0.15	0.20	0.25	0.35	0.40	0.60	0.75	0.94
800	GPM	4.65	4.18	4.10	3.90	3.70	3.50	3.25	3.05
	HP	0.20	0.22	0.29	0.45	0.64	0.86	1.20	1.60
1000	GPM	5.86	5.65	5.40	5.18	4.95	4.76	4.50	4.30
	HP	0.22	0.25	0.30	0.45	0.65	0.75	1.20	1.50
1200	GPM	7.10	6.85	6.60	6.35	6.12	5.90	5.68	5.45
	HP	0.25	0.30	0.40	0.60	0.75	0.97	1.30	1.70
1600	GPM	9.70	9.45	9.20	8.95	8.72	8.50	8.30	8.10
	HP	0.30	0.39	0.60	0.80	1.05	1.30	1.64	2.05
1725	GPM	10.56	10.33	10.10	9.85	9.63	9.42	9.20	9.00
	HP	0.50	0.75	0.90	1.20	1.50	1.75	2.00	2.32

## OBERDORFER



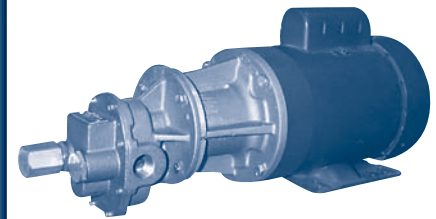
N994 (1/2" Ports)

## UP TO 20 GPM, 100 PSI (150 PSI Intermittent)

- Bronze housing
- Seal Options: Buna or Viton® lip seal
- Available with or without relief valve in single and three phase, 50 and 60 Hz, 12 and 24 vdc, IEEE-45 enclosure and custom configurations that meet MCA, Lloyds, ABS, and USCG specs
- See Page 85, N7000 series for foot mount version

R.P.M.	FT.HD.								
		0	46	92	138	184	231	290	346
	P.S.I.	0	20	40	60	80	100	125*	150*
400	GPM	4.00	3.45	2.90	2.35	1.50	1.30	1.20	1.00
	HP	0.20	0.23	0.30	0.39	0.55	0.65	0.70	0.90
600	GPM	6.30	5.78	5.26	4.74	4.22	3.95	3.50	3.10
	HP	0.25	0.30	0.40	0.65	0.75	0.95	1.15	1.40
800	GPM	8.58	8.18	7.78	7.38	6.98	6.57	6.40	6.20
	HP	0.30	0.40	0.58	0.85	0.93	1.15	1.40	1.70
1000	GPM	10.90	10.51	10.12	9.72	9.33	8.93	8.00	7.90
	HP	0.40	0.60	0.70	0.90	1.10	1.38	1.60	1.92
1200	GPM	13.33	12.94	12.55	12.16	11.76	11.37	11.20	11.10
	HP	0.50	0.70	0.85	1.08	1.35	1.65	1.90	2.20
1600	GPM	18.17	17.79	17.41	17.03	16.65	16.28	16.10	16.00
	HP	0.70	0.91	1.20	1.50	1.80	2.14	2.50	2.90
1725	GPM	19.85	19.48	19.11	18.74	18.37	18.00	17.70	17.40
	HP	0.80	1.10	1.42	1.85	2.18	2.65	3.00	3.60

## OBERDORFER



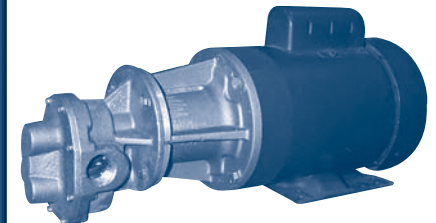
N970 (3/4" Ports)

## UP TO 23 GPM, 100 PSI (150 PSI Intermittent)

- Bronze housing
- Seal Options: Buna or Viton® lip seal
- Available with or without relief valve in single and three phase, 50 and 60 Hz, 12 and 24 vdc, IEEE-45 enclosure and custom configurations that meet MCA, Lloyds, ABS, and USCG specs
- See Page 85, N9000 series for foot mount version

R.P.M.	FT.HD.								
		0	46	92	138	184	231	290	346
	P.S.I.	0	20	40	60	80	100	125*	150*
400	GPM	5.00	4.49	3.99	3.48	2.98	2.48	2.05	1.60
	HP	0.25	0.33	0.40	0.50	0.65	0.75	1.00	1.25
600	GPM	7.50	7.08	6.65	6.23	5.80	5.38	4.90	4.05
	HP	0.35	0.40	0.55	0.75	0.90	1.10	1.32	1.60
800	GPM	10.17	9.82	9.47	9.12	8.77	8.41	7.80	7.30
	HP	0.40	0.60	0.70	1.00	1.15	1.40	1.75	2.05
1000	GPM	13.00	12.65	12.30	11.94	11.58	11.22	10.40	9.90
	HP	0.50	0.70	0.90	1.20	1.45	1.72	2.10	2.50
1200	GPM	16.00	15.67	15.34	15.00	14.67	14.33	13.60	13.00
	HP	0.60	0.80	1.14	1.45	1.85	2.20	2.70	3.20
1600	GPM	21.50	21.12	20.74	20.35	19.97	19.58	18.70	18.00
	HP	0.80	1.70	1.38	1.70	2.03	2.41	2.90	3.40
1725	GPM	23.33	22.93	22.52	22.11	21.71	21.30	20.50	20.10
	HP	0.90	1.19	1.53	1.92	2.25	2.70	3.15	3.70

## OBERDORFER



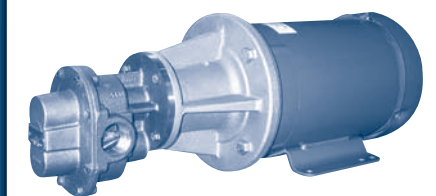
N990 (1" Ports)

## UP TO 40 GPM, 100 PSI (150 PSI Intermittent)

- Bronze housing
- Seal Options: Buna or Viton® lip seal
- Available in single and three phase, 50 and 60 Hz, 12 and 24 vdc, IEEE-45 enclosure and custom configurations that meet MCA, Lloyds, ABS, and USCG specs
- See Page 85, N11HDM series for foot mount version

R.P.M.	FT.HD.								
		0	46	92	138	184	231	290	346
	P.S.I.	0	20	40	60	80	100	120	140
400	GPM	10.00	8.8	7.60	5.50	4.90	2.80	1.54	-
	HP	0.25	0.28	0.35	0.69	0.93	1.00	1.34	-
600	GPM	17.50	16.00	14.90	13.10	12.00	10.00	8.90	7.70
	HP	0.30	0.42	0.61	0.92	1.10	1.50	1.90	2.10
900	GPM	27.70	26.00	25.00	23.20	22.00	20.60	18.70	17.80
	HP	0.44	0.80	1.10	1.50	2.00	2.40	3.00	3.40
1200	GPM	39.00	37.00	35.30	34.10	33.00	31.00	-	-
	HP	0.82	1.10	1.80	2.10	2.90	3.40	-	-
1725	GPM	60.40	58.10	56.40	54.80	52.40	50.50	-	-
	HP	2.0	2.80	3.40	4.20	5.00	6.00	-	-

## OBERDORFER



N1100 (1 1/4" Ports)