

SELF-PRIMING AIR CONDITIONING PUMPS

PRIMO



Mag Drive

570 GPH, UP TO 24,000 BTU, MAGNETIC DRIVE

The Primo magnetic drive centrifugal will self-prime up to 3 feet vertically and will not air lock! All motors are rated continuous duty and are totally enclosed.

Model Number	Volts AC	Hz.	Amps	Port Size	GPH at Feet of Head				Max. Head
					1'	3'	6'	12'	
DP Primo-Mag 115v	115	60	1.0	3/4" MPT x 3/4" MPT	580	540	480	340	18'
DP Primo-Mag 230v	230	60	1.0	3/4" MPT x 3/4" MPT	580	540	480	340	18'

PRIMO



Bronze

1000 GPH, UP TO 48,000 BTU, COMPACT DESIGN

The Primo bronze centrifugal will self-prime up to 3 feet vertically and will not air lock! It will supply a single 6,000 BTU unit up to a multiple unit system of 48,000 BTU. Models are available in 115 vac and 12 vdc.

Model Number	Volts	Hz.	HP	Port Size	GPH at Feet of Head				Max. Head
					1'	3'	6'	10'	
DP Primo 115V	115 vac	60	1/12	3/4" FPT x 3/4" FPT	1020	1080	720	420	14'
DP Primo 12V	12 vdc	60	1/8	3/4" FPT x 3/4" FPT	1020	1000	720	420	14'

CONTENTS

PUMPING PRINCIPLES

ENGINE COOLING

ENGINEERING TABLES

TROUBLE-SHOOTING GUIDE

INDEX

HOME

NEXT

BACK

OBERDORFER



300B Series

1300 GPH, UP TO 60,000 BTU, STAINLESS OR MONEL SHAFT

The bronze Oberdorfer 300B series utilizes a mechanical carbon/ceramic seal and self-priming to 20 feet. They come standard with a stainless steel shaft and an open drip proof motor. An optional Monel shaft along with various custom configurations are available including TEFC, IEEE-45 and DC models. See page 132 for parts. (Ports: 1" FPT inlet x 1" FPT outlet)

Model Number	Shaft Material	Volts AC	Hz.	HP	GPH at Feet of Head				Max. Head
					5'	10'	15'	20'	
OB 300B-F13	Stainless	115/230	60	1/3	1200	920	840	680	35'
OB 300B-1-F26	Monel	115/230	60	1/3	1200	920	840	680	35'

* 50hz and 3 phase models available

AMT



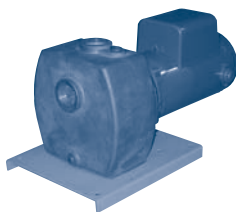
3890 Series

1500 - 3700 GPH, 1" AND 1 1/2" FPT, UP TO 6 FOOT LIFT

These AMT self-priming bronze centrifugals utilize a mechanical carbon/ceramic seal and will lift up to six feet vertically. Below are listed a few of the common models. Custom configurations are available including TEFC, IEEE-45, 3 phase and DC models.

Model Number	Shaft Material	Port Size	Volts AC	Hz.	HP	GPH at Feet of Head				Max. Head
						10'	20'	30'	40'	
AM 5660B-10J36J	Stainless	1" FPT	115/230	60	1/2	2280	1800	1200	480	46'
AM 5660B-1-10J36J	Monel	1" FPT	115/230	60	1/2	2280	1800	1200	480	46'
AM 5661B-10M36J	Stainless	1" FPT	115/230	60	3/4	3240	2880	2220	1320	52'
AM 5661B-1-10M36J	Monel	1" FPT	115/230	60	3/4	3240	2880	2220	1320	52'
AM 3890B-10M36J	Stainless	1 1/2" FPT	115/230	60	3/4	3720	3120	2460	1440	50'
AM 3890B-1-10M36J	Monel	1 1/2" FPT	115/230	60	3/4	3720	3120	2460	1440	50'

OBERDORFER



750B Series

5500 GPH, 1 1/2" FPT x 1 1/2" FPT, UP TO 20 FOOT LIFT

The Oberdorfer 750B series utilizes a mechanical carbon/ceramic seal and will self-prime to 20 feet. They come standard with a stainless steel shaft and an open drip proof motor. An optional Monel shaft along with various custom configurations are available including TEFC and IEEE-45 models. (Ports: 1 1/2" FPT inlet x 1 1/2" FPT outlet)

Model Number	Shaft Material	Volts AC	Hz.	HP	GPH at Feet of Head				Max. Head
					30'	40'	60'	80'	
OB 750B-T19	Stainless	115/230	60	1 1/2	5520	5100	3000	720	86'
OB 750B-1-T19	Monel	115/230	60	1 1/2	5520	5100	3000	720	86'
OB 750BP-30T36BJ	Stainless	230/460	60	1 1/2	5520	5100	3000	720	86'

* 50hz models available