

WATER SYSTEMS FOR LARGE VESSELS

CONTENTS

UP TO 100 GPM, 1-3 HP, IN BRONZE AND C.I.

The Burks WA6 series is a high volume water system pump capable of delivering up to 100 gpm. Sizes range from 1 to 3 horsepower and are available in bronze or cast iron construction, single or three phase, 50 or 60 hz, IEEE-45 enclosure and custom configurations that meet MCA, Lloyds, ABS and USCG specifications. Below are some examples of the sizes available. Call us for information on the configuration to meet your requirements.

Bronze Model 115/230 vac 60 hz	Bronze Model 230/460 vac 60 hz	HP	GPM at PSI		Inlet/Outlet
			20	40	
BU WA6B-10N36J	BU WA6B-30N36J	1	52	23	1 1/2" x 1 1/2"
BU WA6B-10T36J	BU WA6B-30T36J	1 1/2	61	24	1 1/2" x 1 1/2"
BU WA6B-10W36J	BU WA6B-30W36J	2	73	37	1 1/2" x 1 1/2"
BU WA6B-10Y36J*	BU WA6B-30Y36J	3	93	50	1 1/2" x 1 1/2"

*230v only

PUMPING PRINCIPLES

ENGINE COOLING

ENGINEERING TABLES

TROUBLE-SHOOTING GUIDE

INDEX

UP TO 32 GPM, 150 PSI, IN BRONZE AND C.I.

The Burks CS series turbine pump design delivers high pressure to all areas of your vessel. Sizes range from 1 to 5 horsepower and are available in bronze or cast iron construction, single or three phase, 50 or 60 hz, IEEE-45 enclosure and custom configurations that meet MCA, Lloyds, ABS and USCG specifications. Below are some examples of the sizes available. Call us for information on the configuration to meet your requirements.

115/230 vac Bronze Number	Hz	230/460 vac Bronze Model	Hz	HP	GPM at PSI				Max PSI	Inlet/Outlet
					20	50	100	150		
BU 10CS5MB	60	BU 310CS5MB	50/60*	1	10	9	-	-	97	1 1/4" x 1"
BU 15CS6MB	60	BU 315CS6MB	50/60*	1 1/2	15	13	10	-	108	1 1/4" x 1"
BU 20CS6MB	60	BU 320CS6MB	50/60*	2	15	13	10	9	131	1 1/4" x 1"
BU 20CS7MB	60	BU 320CS7MB	50/60*	2	19	16	-	-	86	1 1/4" x 1"
		BU 330CS8MB	60	3	25	22	-	-	97	1 1/4" x 1"
		BU 350CS9MB	60	5	31	28	23	20	151	1 1/4" x 1"

*Flows shown are at 60 Hz.

HOME

NEXT

BACK

SINGLE AND DUAL SYSTEMS BY GIANNESCHI AND RAMACCIOTTI

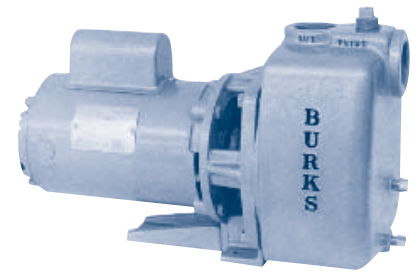
G & R (Gianneschi and Ramacciotti) have manufactured high quality pumps and blowers for the marine industry since 1969. Their pumps are used by yacht manufacturers throughout the world for bilge, fuel transfer, fire protection and water systems. Their most popular series for water systems are the Idromini ACB and the ECOJET. The Idromini ACB comes complete with pressure switch, gauge and accumulator tank and is available in two flows (5 and 13 gpm) and three voltages (12 vdc, 24 vdc and 230 vac). The ECOJET series (12 - 50 gpm) comes in a variety of configurations that include the new variable speed drive option (that maintains constant pressure in your system) and dual pump systems that function whether you have shore power, generator or battery power available.

AC/DC PARALLELAGON WATER SYSTEM

The Paralleagon by Groco is the first parallel pump system complete with solid-state reliability for pressure control and dry-tank protection. This system combines a DC (12, 24 or 32 vdc) and an AC (115 or 230 vac) Paragon Senior. The AC Paragon is the primary pump and operates whenever AC power is present while the DC Paragon operates whenever AC power is absent. Both pumps deliver up to 11 gpm and operate in the 30-50 psi pressure range. A single pressure transducer (not a pressure switch) controls the on-off operation of both pumps.

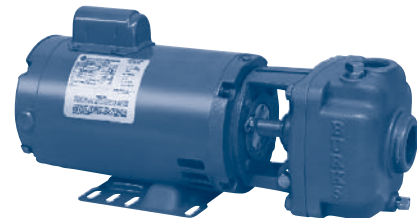
Model	Max. GPM	AC Volts	DC Volts	Inlet & Outlet	Dimensions (H x W x L)
GC PAR-1-Volts	11	115 or 230 vac	12, 24 or 32 vdc	1" ID Hose	12.79" x 20" x 24"

BURKS



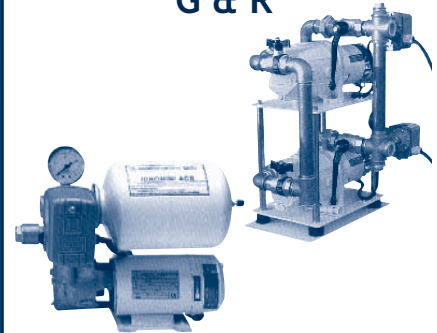
WA6 Series

BURKS



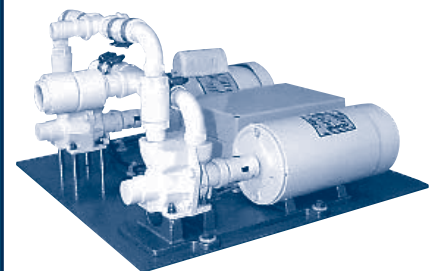
CS Series

G & R



AC/DC

GROCO



AC/DC