

# LIVEWELL AND LOW PRESSURE WASHDOWN

CONTENTS

PUMPING PRINCIPLES

ENGINE COOLING

ENGINEERING TABLES

TROUBLE-SHOOTING GUIDE

INDEX

HOME

NEXT

BACK

## 12 VDC DUAL PORT PUMPS FOR WASHDOWN PUMP ATTACHMENT

Both series of these unique pumps include a separate 1/2" FPT suction port that allows the attachment of a self-priming high-pressure washdown pump (see page 21). The Shurflo "Sentry" magnetic drive series is sealless and will not airlock. Rule utilizes their proven direct drive design to provide a dependable and economical solution.

Model	Brand	GPH	Suction / Discharge	Amp Draw
SF 1700-001-030	Shurflo	500	3/4" MPT / 3/4" Male Barb	1.5
SF 1700-011-030	Shurflo	800	3/4" MPT / 3/4" Male Barb	2.75
SF 1700-021-030	Shurflo	1100	3/4" MPT / 1 1/8" Barb	3.75
RU 200FCDP	Rule	360	3/4" MPT / 3/4" Barb	1.9
RU 201FCDP	Rule	500	3/4" MPT / 3/4" Barb	2.1
RU 203FCDP	Rule	700	3/4" MPT / 3/4" Barb	2.8
RU 205FCDP	Rule	1100	3/4" MPT / 1 1/8" Barb	3.3

### RULE / SHURFLO



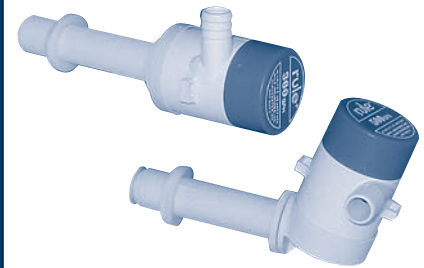
Dual Port Livewell Pumps

## 12 VDC THRU-HULL MOUNTED LIVEWELL PUMPS

Rule pumps are available in straight or angled thru-hull mounting to fit in the tightest bilge. Both mounting types are available in Rule's original or replaceable cartridge type configuration. The cartridge series allows for quick motor replacement without disturbing the thru-hull mounting.

Pump Type		Thru-Hull Angle	GPH	Replacement Motor Cartridge	Suction / Discharge	Amp Draw
Standard	Cartridge					
RU 200	RU 200C	Angled	360	RU 200R	3/4" MPT / 3/4" Barb	1.9
RU 200ST	RU 200STC	Straight	360	RU 200R	3/4" MPT / 3/4" Barb	1.9
RU 201	RU 201C	Angled	500	RU 201R	3/4" MPT / 3/4" Barb	2.1
RU 201ST	RU 201STC	Straight	500	RU 201R	3/4" MPT / 3/4" Barb	2.1
RU 203	RU 203C	Angled	700	RU 203R	3/4" MPT / 3/4" Barb	2.8
RU 203ST	RU 203STC	Straight	700	RU 203R	3/4" MPT / 3/4" Barb	2.8

### RULE



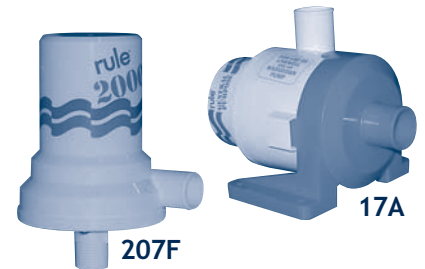
Thru-Hull Livewell Pumps

## 12 - 32 VDC HIGH CAPACITY BAITWELL/WASHDOWN PUMPS

These Rule pumps offer high flows for large baitwells, commercial livewells, and low-pressure washdown applications. The 207F mounts directly on a thru-hull with its 3/4" MPT suction port. The 17A - 19A series utilizes 1 1/2" slip-on ports to connect into your system.

Model	Volts	GPH	Suction / Discharge	Amp Draw
RU 207F	12 vdc	1200	3/4" MPT / 1 1/8" Barb	8.4
RU 17A	12 vdc	3800	1 1/2" Barb / 1 1/2" Barb	15.5
RU 18A	24 vdc	3700	1 1/2" Barb / 1 1/2" Barb	6.9
RU 19A	32 vdc	3700	1 1/2" Barb / 1 1/2" Barb	5.0

### RULE



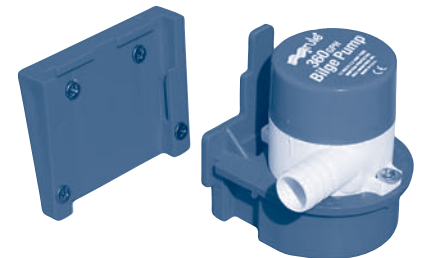
High Capacity Pumps

## 12 VDC TRANSOM MOUNT PUMPS

Rule introduces a lineup of transom mounted aerator pumps. This allows the fisherman to have professional aeration of his livewell without the need to install a pump through the hull. The unique "quick-release" pump with strainer base assembly snaps easily into the transom bracket provided. At the end of the day the pump can be removed for storage. Pumps feature 5' wire leads.

Model	GPH	Discharge	Amp Draw
RU 24 TB	360	3/4" ID Hose	1.9
RU 25 DTB	500	3/4" ID Hose	2.1
RU 20 RTB	800	3/4" ID Hose	2.8
RU 27 DTB	1100	1 1/8" ID Hose	3.3

### RULE



Transom Mount Pumps

Use Rule's #78 and #75 spray heads for baitwell