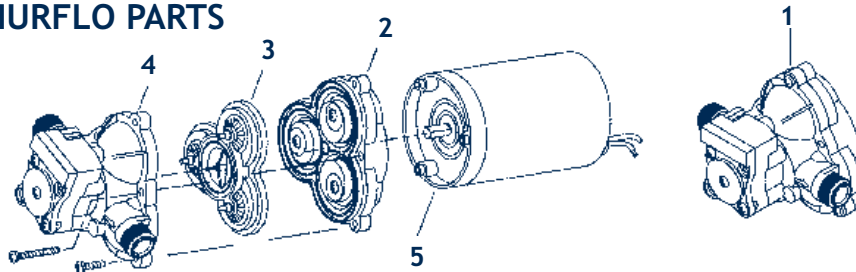


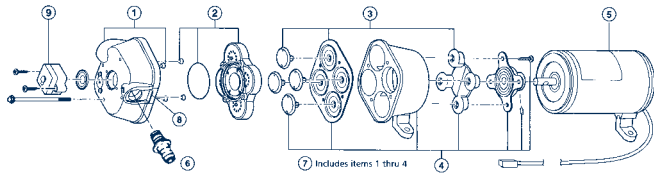
# SHURFLO AND FLOJET REPAIR PARTS

## 2088 SERIES SHURFLO PARTS



Name	Model #	Pump Head Repair Kit	Lower Housing	Valve Assembly	Switch and Upper Housing	Motor
		1	2	3	4	5
Standard	2088-423-344	94-236-03	94-238-04	94-232-06	94-231-10	11-148-06
	2088-423-244	94-236-03	94-238-04	91-232-06		11-148-06
Standard (24 vdc)	2088-573-354	94-236-03	94-238-04	94-232-06	94-231-10	11-142-16
Silencer	2088-573-254	94-236-03	94-238-04	94-232-06		11-142-16
	2093-224-313	94-236-08	94-238-03	94-232-06	94-231-10	11-192-06
	2093-224-213	94-236-08	94-238-03	94-232-06		11-192-06
Deluxe	2088-433-344	94-236-03	94-238-04	94-232-06	94-231-10	11-173-06
	2088-433-244	94-236-03	94-238-04	94-232-06		11-173-06
Premium	2088-414-934	94-236-14	94-238-03	94-232-06	94-231-10	11-185-06
	2088-414-134	94-236-14	94-238-03	94-232-06		11-185-06
Standard Blaster	2088-534-344	94-236-14	94-238-03	94-232-06	94-231-10	11-173-06
	2088-534-244	94-236-14	94-238-03	94-232-06		11-173-06
Standard Blaster (24 vdc)	2088-574-344	94-236-14	94-238-03	94-232-06	94-231-10	11-187-06
	2088-574-244	94-236-14	94-238-03	94-232-06		11-187-16
Pro Blaster	2088-534-944	94-236-14	94-238-03	94-232-06	94-231-10	84-008-31
	2088-534-844	94-236-14	94-238-03	94-232-06		84-008-31
Pro Baitmaster	2088-414-734	94-236-14	94-238-03	94-232-06	94-231-10	84-008-01
	2088-414-634	94-236-14	94-238-03	94-232-06		84-008-01
Pro Baitmaster (24 vdc)	2088-574-734	94-236-14	94-238-03	94-232-06	94-231-10	84-008-11
	2088-574-634	94-236-14	94-238-03	94-232-06		84-008-11

## 4000 SERIES FLOJET PARTS



Part Number	Description #6 of Diagram
20381-000	Quad Port x 1/2" M Qest, Straight
20381-002	Quad Port x 1/2" HB, Straight
20381-006	Quad Port x 3/8" HB, Straight
20381-007	Quad Port x GH Adaptor
20381-008	Quad Port x 1/2" M Qest, 90° Elbow
20381-009	Quad Port x 1/2" HB, 90° Elbow
20381-010	Quad Port x 3/8" HB, 90° Elbow
20381-024	Quad Port x 3/8" HB, 90° Elbow
20381-026	Quad Port x 3/8" HB, 90° Straight

KEY MODEL	**SERVICE KIT	1 UPPER HSG	2 VALVE ASSY	3 DIAPHRAGM	4 LOWER HSG	5 MOTOR	7 PUMP HEAD	8 SLIDE CLIPS	9 PRESSURE SWITCH
4105-114	20409-054	20404-005	20407-010	20403-050	20419-003	2009-038A	20406-005A	20408-000	-
4105-314	20409-054	20404-005	20407-010	20403-050	20419-003	2019-010A	20406-005A	20408-000	-
4105-414	20409-054	20404-005	20407-010	20403-050	20419-003	N/A	20406-005A	20408-000	-
4105-143	20409-043	20404-004	20407-030	20403-040	20419-001	2009-073A*	20406-004A	20408-000	-
4105-343	20409-043	20404-004	20407-030	20403-040	20419-001	2019-025A*	20406-004A	20408-000	-
4105-501	20409-054	20404-005	20407-010	20403-050	20419-005	2009-079A*	20406-013A	20408-000	-
4105-502	20409-054	20404-005	20407-010	20403-050	20419-003	2009-042A	20406-013A	20408-000	-
4105-503	20409-043	20404-004	20407-010	20403-050	20419-005	2019-026A*	20406-013A	20408-000	-
4105-512	20409-043	20404-004	20407-030	20403-050	20419-001	02019-025A	20406-004A	20405-000	-
4105-524	20409-043	20404-004	20407-030	20403-040	20419-001	02049-025A	20406-004A	20408-000	-
4305-143	20409-043	20404-003	20407-030	20403-040	20419-002	2009-027A	20406-002A	20408-000	2090-118
4305-144	20409-043	20404-003	20407-030	20403-040	20419-011	2009-087A*	20406-011A	20408-000	2090-118
4305-343	20409-043	20404-003	20407-030	20403-040	20419-002	2019-006A	20406-002A	20408-000	2090-118
4305-443	20409-043	20404-003	20407-030	20403-040	20419-002	N/A	20406-002A	20408-000	2090-118
4305-500	20409-043	20404-008	20407-030	20403-040	20419-001	2009-073A*	20406-007A	20408-000	2090-104
4305-501	20409-043	20404-008	20407-030	20403-040	20419-001	2019-023A*	20406-007A	20408-000	2090-104
4305-502	20409-043	20404-012	20407-030	20403-040	20419-000	2019-023A*	20406-012A	20408-000	2090-108
4305-503	20409-043	20404-012	20407-030	20403-040	20419-000	2009-074A*	20406-012A	20408-000	2090-108
4405-143	20409-043	20404-002	20407-030	20403-040	20419-001	2009-073A*	20406-003A	20408-000	2090-104
4405-343	20409-043	20404-002	20407-030	20403-040	20419-001	2019-023A*	20406-003A	20408-000	2090-104
4405-443	20409-043	20404-002	20407-030	20403-040	20419-001	2049-025A*	20406-003A	20408-000	2090-104
4125-114	20409-054	20404-005	20407-010	20403-050	20419-003	2009-080A*	20406-005A	20408-000	-
4125-314	20409-054	20404-005	20407-010	20403-050	20419-003	2019-027A*	20406-005A	20408-000	-
4125-414	20409-054	20404-005	20407-010	20403-050	20419-003	2049-026A*	20406-005A	20408-000	-
4125-502	20409-054	20404-005	20407-010	20403-050	20419-003	2009-080A*	20406-005A	20408-000	2090-118
4125-504	20409-054	20404-005	20407-010	20403-050	20419-003	2019-027A*	20406-005A	20408-000	2090-118
4325-143	20409-043	20404-003	20407-030	20403-040	20419-002	2009-080A*	20406-002A	20408-000	2090-118
4325-343	20409-043	20404-003	20407-030	20403-040	20419-002	2019-027A*	20406-002A	20408-000	-
4325-443	20409-043	20404-003	20407-030	20403-040	20419-002	2049-026A*	20406-002A	20408-000	-
4325-504	20409-043	20404-003	20407-030	20403-040	20419-004	2009-080A*	20406-015A	20408-000	2090-118
R4515-743	20409-043	20404-027	20407-030	20403-040	20419-002	R2009-128A	20406-037A	20408-000	2090-118
R4525-743	20409-043	20404-028	20407-030	20403-040	20419-002	R2009-127A	20406-038A	20408-000	2090-118

\* Requires new mounting feet (FJ 20717-100A) when used with 3 ft. pumps. \*\* Service Kit is for Valves, Diaphragm and Cam/Bearing Assembly

CONTENTS

PUMPING PRINCIPLES

ENGINE COOLING

ENGINEERING TABLES

TROUBLE-SHOOTING GUIDE

INDEX

HOME

NEXT

BACK