

CONTENTS

PUMPING PRINCIPLES

ENGINE COOLING

ENGINEERING TABLES

TROUBLE-SHOOTING GUIDE

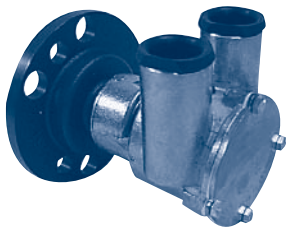
INDEX

HOME

NEXT

BACK

## JOHNSON Crankshaft Mount



10-24232-1 (F6B-9)

Indmar

Part No.	Description	Qty
812B	Impeller	1
01-45670	Cam (10-24232-1)	1
05-04-174	Screw for Above	1
01-45687	Cam (10-24232-2)	1
05-04-175	Screw for Above	1
01-45312-1	Cover	1
01-45315	Gasket	1
05-29-515	Lip Seal	1
01-45680	Seal Washer	1
05-04-550	Cover Screw	4
05-06-501	O-Ring	1
05-08-128	Ball Bearing	2

## SHERWOOD 4 and 6 Cylinder Diesel



K-90

Isuzu # X-26-230-1023

Part No.	Description	Qty
10615K	Impeller	1
12859	Mech Seal	1
4264	Seal Spacer	1
12231	Cover O-Ring	1
12855	Gasket	1
12856	Wearplate	1
10944	Cam	1
10515	Cam Screw	1
4432	Key	1
12211	Ball Bearing	2
5133	Bearing Spacer	1
4258	Snap Ring (SM)	3
4259	Snap Ring (LG)	2
12857	Cover Bolts	3
12710	Lock Washers	3
12596	Shaft	1

## JABSCO Kubota

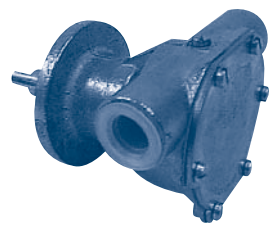


29460-1301

Kubota

Part No.	Description	Qty
18653-0001	Impeller	1
2995-0000	Gasket	1
SP2701-1006	Water Seal	1
91002-0010	Cover Screw	6
2907-0000	Cam	1
91002-0020	Cam Screw	1
SP2701-1006	Oil Seal	1
SP2601-0457	Bearing	2
29467-0000	Shaft	1
11830-0000	End Cover	1

## JOHNSON Nanni P30



10-35127

Nanni

Part #	Description	Qty
810B	Impeller	1
05-29-139	Lip Seal	2
01-45955	Seal Spacer	1
01-45284	Gasket	1
01-45282	End Cover	1
05-04-642	Cover Screw	6
05-08-130	Ball Bearing	2
05-34-501	Snap Ring	1
05-06-513	Slinger	1
01-42389	Cam	1
05-04-114	Cam Screw	1
01-45353	Shaft	1
05-06-523	Mounting O-Ring	1
01-43238	Mounting Clamp	2

## SHERWOOD OMC - P30 V8 Chevy

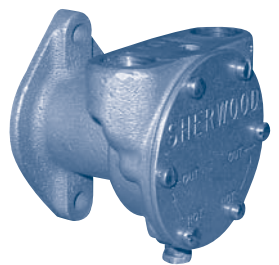


G-46 (Old #G45-2)

OMC # 985096 (981939)

Part #	Description	Qty
10615K	Impeller	1
12859	Mech Seal	1
4264	Seal Spacer	1
12231	Cover O-Ring	1
12855	Gasket	1
12856	Wearplate	1
10929	Cam	1
10515C	Cam Screw	1
4432	Key	1
12211	Ball Bearing	2
5133	Bearing Spacer	1
4258	Snap Ring (SM)	3
4259	Snap Ring (LG)	2
12857	Cover Bolts	3
12710	Lock Washers	3
13363	Shaft	1
15048	Pulley	1

## SHERWOOD



E-20

Palmer

Part #	Description	Qty
10077	Impeller	1
10286	Gasket	1
11628	Lip Seal	1
10195	Screw	1
10285	Impeller Cam	1
11747	Shaft	1
336	Plug	1
10593	Cover Plate	1
344	Screw	6
10093	Key	1
4306	Ball Bearing	2
4304	Small Snap Ring	1
4303	Large Snap Ring	1
10859	Bearing Seal	1
10148	Washer	1

## JOHNSON Pathfinder 6.2 Diesel

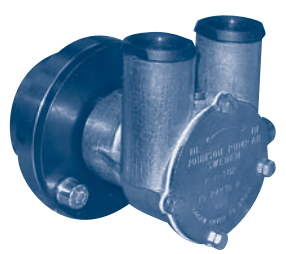


10-24225

Pathfinder

Part #	Description	Qty
1027B	Impeller	1
05-29-515	Lip Seal	1
01-45680	Lip Seal Washer	1
01-45315	Gasket	1
01-45312-1	End Cover	1
05-04-550	Cover Screw	4
01-45329	Full Cam	1
05-04-174	Full Cam Screw	1
01-45656	1/2 Cam	1
05-04-175	1/2 Cam Screw	1
05-06-501	Slinger O-Ring	1
05-08-128	Ball Bearing	2
09-45805	Shaft/Hub	1

## JOHNSON Pathfinder 4 and 5 Cylinder



10-24230-2

Pathfinder, Volkswagen Block

Part #	Description	Qty
1027B	Impeller	1
01-45315	Gasket	1
05-29-515	Lip Seal	1
01-45329	Full Cam	1
05-04-174	Full Cam Screw	1
01-45656	1/2 Cam	1
05-04-175	1/2 Cam Screw	1
01-45680	Washer	1
05-06-501	O-Ring	1
05-08-128	Ball Bearing	2
05-04-550	Cover Screw	4
01-45312-1	End Cover	1
09-45806	Shaft / Hub	1