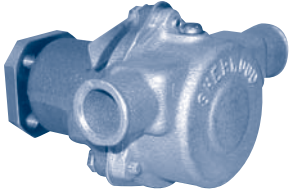


# CHRIS-CRAFT ENGINE PUMPS

## SHERWOOD Current 350 C.I.

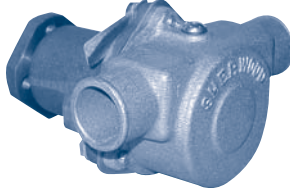


### G-30-2 (1" Ports)

Chris-Craft # 16.80 - 18346

Part #	Description	Qty
9959K	Impeller	1
12859	Seal Assy	1
12211	Ball Bearing	2
12612	Shaft	1
10627	Cam	1
12855	Gasket	1
12231	O-Ring	1
12856	Plate	1
4432	Key	1
12791	Pin	1
12615	Hub	1
4258	Snap Ring (SM)	3
4259	Snap Ring (LG)	2
12328	Brg. Hzg	1
10515C	Cam Screw	1
4264	Seal Washer	1
12857	Screw	3
12710	Washer	3
12303	Body	1

## SHERWOOD Current 454 C.I.

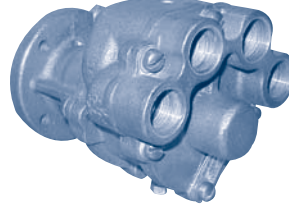


### G-45-1 (1 1/4" Ports)

Chris-Craft # 16.80 - 18347

Part #	Description	Qty
10615K	Impeller	1
12859	Seal Assy	1
12211	Ball Bearing	2
12612	Shaft	1
10944	Cam	1
12855	Gasket	1
12231	O-Ring	1
12856	Wearplate	1
4432	Key	1
12791	Pin	1
12615	Hub	1
4258	Snap Ring (SM)	3
4259	Snap Ring (LG)	2
12328	Brg Hzg	1
10515C	Cam Screw	1
4264	Seal Washer	1
12857	Screw	3
12710	Washer	3

## SHERWOOD Model 430 / 283 C.I.

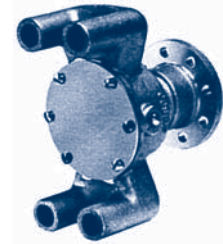


### N-10360GX

Chris-Craft # 16.80 - 10004

Part #	Description	Qty
10077K	Impeller	2
10546	Seal Assy	1
4306	Ball Bearing	1
10078	Shaft	1
10134	Cam	1
9917	Gasket	1
9918	Gasket	1
2075G	Carbon Bushing	1
10079	Wearplate	1
10093	Key	2
9919	Screw	10
12710	Washer	10
1311	Pin	4
4304	Snap Ring (SM)	1
336	Plug	1

## JABSCO Model 430 / 283 C.I.



### 12050-0001

Part #	Description	Qty
3085-0001	Impeller	1
91003-0090	Screw	6
12064-0000	Cover	1
8641-0000	Gasket	1
8493-0000	Wearplate	1
96080-0080	Seal	1
91003-0110	Screw (Cam)	1
8528-0000	Cam	1
3376-0000	Adaptor Ring	1
12057-0000	Shaft	1
92700-0060	Brg Seal	1
92600-0070	Bearing	1
8483-0000	Coupling	1
90117-0121	Service Kit	1

## SHERWOOD 327F and 427

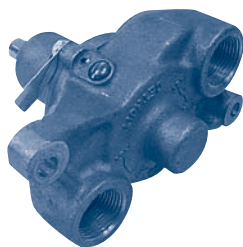


### S11095-G

Chris-Craft # 16.80-10010

Part #	Description	Qty
10615K	Impeller	1
10545	Seal Assy	1
7381	Ball Bearing	1
14212	Shaft	1
10944	Cam	1
10971	Gasket	1
06333	Carbon Bushing	1
1482	Cover Screws	4
10183	Cover	1
4432	Key	1
10769	Hub	1
4258	Snap Ring (SM)	2
8781	Snap Ring (LG)	1
12710	Washer	4
336	Plug	2
10515C	Cam Screw	1

## SHERWOOD 307-327Q

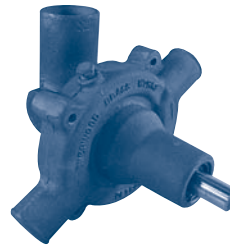


### D-05

Chris-Craft # 16.80-18340

Part #	Description	Qty
10615K	Impeller	1
10927	Seal Assy	1
4257	Ball Bearing	2
11429A	Shaft	1
10944	Cam	1
10931	Gasket	1
06333	Carbon Bushing	1
1482	Cover Screw	4
12710	Washer	4
4432	Key	1
1311	Pin	2
4258	Snap Ring (SM)	2
4259	Snap Ring (LG)	1
10515C	Cam Screw	1

## SHERWOOD 283F-327F

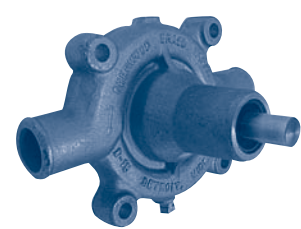


### Q10825CC / 10830C

Chris-Craft # 16.80-27554 (Q10830C)  
Chris-Craft # 16.80-27555 (Q10825CC)

Part #	Description	Qty
10557	Impeller (10825)	1
10635	Impeller (10830)	1
10577	Seal Assy	1
14055	Shaft & Brg	1
10575	O-Ring	1
10576	Snap Ring (LG)	1
10769	Hub	1
336	Plug	1
10574	Snap Ring (SM)	1

## SHERWOOD 307-327Q and 427



### D10 / D15 S11110C / S11115CC

Chris-Craft # 16.80-28342 (D10)  
Chris-Craft # 16.80-28341 (D15)  
Chris-Craft # 16.80-07808 (S11110C)  
Chris-Craft # 16.80-11007 (S11115CC)

Part #	Description	Qty
10635	Impeller (D10)	1
10635	Impeller (11110)	1
10557	Impeller (D15)	1
10557	Impeller (11115)	1
10577	Seal Assy	1
14055	Shaft & Brg	1
11425A	Gasket (D10/D15)	1
336	Plug	1
10574	Snap Ring	1
15945	O-Ring	1

CONTENTS

PUMPING PRINCIPLES

ENGINE COOLING

ENGINEERING TABLES

TROUBLE-SHOOTING GUIDE

INDEX

HOME

NEXT

BACK