

CONTENTS

PUMPING PRINCIPLES

ENGINE COOLING

ENGINEERING TABLES

TROUBLE-SHOOTING GUIDE

INDEX

HOME

NEXT

BACK

SHERWOOD 4107 / 4108 Engines



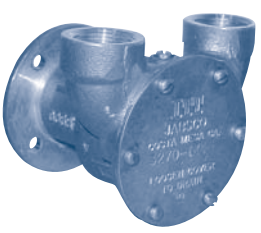
G-65

Perkins # NA003335

Part #	Description	Qty
9959K	Impeller	1
12444	Shaft	1
12211	Bearing	2
10514C	Seal	1
10515C	Cam Screw	1
11360A	Gasket	1
10072	Cam	1
11389A	Cover	1
4432	Key	1
11417A	Screw	4
WB 11143	Mtg. Gasket	1

4 3/8" Diameter Mtg. Flange

JABSCO 4107 / 4108 Engines



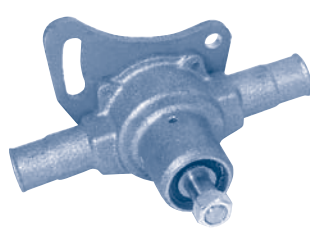
3270-0001 (3270-200)

Perkins # 35615

Part #	Description	Qty
1210-0001	Impeller	1
91002-0020	Screw	6
11830-0000	End Cover	1
3298-0000	Gasket	1
92700-0060	Bearing Seal	1
92600-0070	Bearing	1
3276-0000	Adaptor Ring	1
3277-0000	Shaft	1
3278-0000	Coupling	1
3286-0000	Slinger	1
92700-0060	Seal	1
92000-0210	O-Ring	1
7884-0000	Cam & Wearplate	1
7883-0000	Wearplate	1
91003-0010	Cam Screw	1
PKN 36821506	Mtg. Gasket	1

2 7/8" Diameter Mtg. Flange

SHERWOOD 4154 Engines

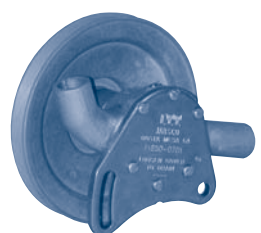


H-5

Perkins # NA005576

Part #	Description	Qty
9959K	Impeller	1
13272	Shaft	1
13270	Nut for Shaft	1
13271	Key for Pulley	1
6602	Ball Bearing	2
11816	Bearing Seal	1
10514C	Water Seal	1
10515C	Cam Screw	1
12231	O-Ring	1
11797	Cover Screws	4
15883	Cam	1
11795	Cover	1
4432	Impeller Key	1
12582	Snap Ring (SM)	1
4259	Snap Ring (LG)	1
13273	Washer	1
PKN 003419	Pulley	1

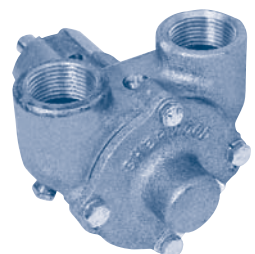
JABSCO 4154 Engines



11850-0701 (11850-0711)

Part #	Description	Qty
1210-0001	Impeller	1
91026-0010	Cover Screw	6
12346-0000	End Cover	1
8641-0000	Gasket	1
91030-0100	Screw (Plug)	1
91030-0110	Cam Screw	1
8528-0000	Cam	1
8493-0000	Wearplate	1
96080-0080	Seal	1
12019-0000	Washer	1
92600-0070	Ball Bearing	1
18714-0000	Ret. Ring	1
91401-0030	Key	1
11977-0000	Shaft	1
PKN 003419	Pulley	1
93000-0090	Bearing Seal	1

SHERWOOD 6354 Engines (Clamp Mount)

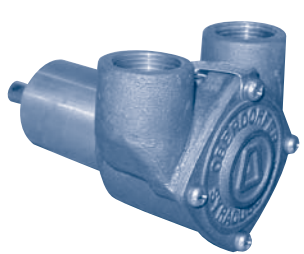


RP-B-C

Perkins # NA001175

Part #	Description	Qty
10615K	Impeller	1
10093	Shaft Key	1
4432	Impeller Key	1
4258	Snap Ring (SM)	3
4259	Snap Ring (LG)	1
4257	Ball Bearing	1
10927	Mechanical Seal	1
10515C	Cam Screw	1
10931	Gasket	1
12710	Lock Washer	4
1482	Cover Screw	4
10944	Cam	1
10183	Cover	1
11374A	Shaft	1
06333	Bushing	1
336	Drain Plug	2
1311	Pin	2

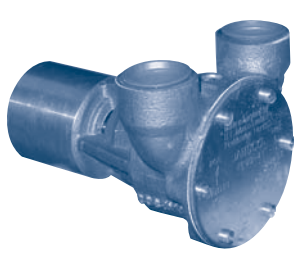
OBERDORFER 6354 Engines (Clamp Mount)



403M

Part #	Description	Qty
6603	Impeller	1
5504	Screw	4
6924	Cover	1
8230	O-Ring	1
6635	Wearplate	1
6606	Cam	1
7300-62	Screw	1
6685	Pin	1
6609	Seal Brg.	2
5928	Ball Brg.	2
5926	Ring (Shaft)	2
5925	Ring (Brg.)	1
32230	Seal Assy	1
6631	Washer Seal	1
6925	Shaft	1
5475	Key (Impeller)	1

JABSCO 6354 (Clamp Mount)

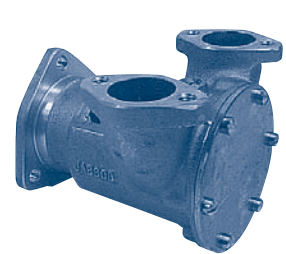


9990-21 / 9990-41

Perkins # 2488324

Jabsco #	Description	Qty
1210-0001	Impeller	1
18753-0049	Mechanical Seal	1
3298-0000	Gasket	1
11830-0000	End Cover	1
91002-0020	Cover Screws	6
490-0001	Cam	1
91003-0010	Cam Screw	1
7883-0000	Wearplate	1
92600-0130	Ball Bearing	2
92700-0060	Oil Seal	1
SP2701-15	Outer Brg Seal	1

JABSCO 6354 Engine (3 Bolt Mtg.)



9700-01 / 9700-04

Perkins # 2488275(9700-01)

Part #	Description	Qty
920-0001	Impeller	1
22645-0000	Seal Assy	1
92600-0060	Bearing	1
934-0000	Cam (9700-01)	1
91004-0090	Cam Screw (9700-01)	1
3255-0000	1/2 Cam (9700-04)	1
91004-0110	1/2 Cam Screw	1
91003-0010	Cover Screw	6
11831-0000	Cover	1
890-0000	Gasket	1
4156-0010	Wearplate	1
SH 4258	Snap Ring (Seal)	1
913-0000	Bearing Seal	1
18724-0000	Snap Ring (LG)	1
18713-0000	Snap Ring (SM)	1
9707	Shaft	1
3180-0000	Slinger	1