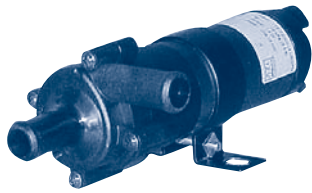


JOHNSON MCE Series



**10-24486-11B
(OLD #10-46137-10)**

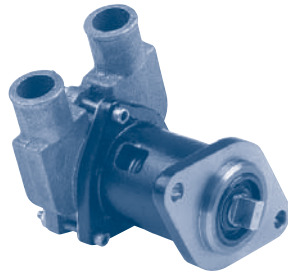
Onan #132-0326

Onan Pump #	Depco Pump #
132-0326	JS 10-24486-11B

Onan Impeller Cross Reference

Onan Part #	Depco Part #
131-0050	JA 12104-0001
131-0160	ON 131-0160
131-0218	ON 131-0386
131-0386	ON 131-0386
132-0117	SH 9959K
132-0162	JA 1210-0001
132-0292	SH 10615K
132-0316	OB 6593
132-0317	SH 9959K
132-0375	SH 10077K
132-0415	SH 8000K
132B59	JA 4528-0001
MAJ/MDSL	JA 12104-0001

SHERWOOD 6.5-10KW

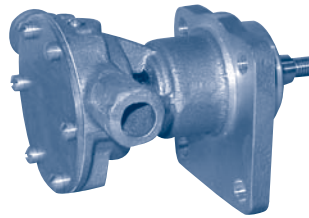


G-701

Onan #132-0358

Sherwood No.	Description	Qty
10077K	Impeller	1
22770	Cover O-Ring	2
18035	Mechanical Seal (Water) ..	1
4264	Seal Washer	1
21751	Lip Seal (Bearing)	1
22768	Wearplate	1
21303	Wearplate O-Ring	1
10093	Key	1
12211	Ball Bearing	2
21974	Bearing Spacer	1
4258	Snap Ring (SM)	1
4259	Snap Ring (LG)	1
22767	Cover	1
19256	Cover Bolt	3
22775	Bolt Nut	3
22769	Shaft	1

JABSCO M20

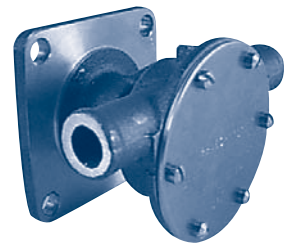


29350-1001

Perkins

Jabco #	Description	Qty
4528-0001	Impeller	1
1126-0000	Gasket	1
92701-0140	Seal	1
91002-0010	Cover Screw	6
4271-0000	Cam & Wearplate	1
91002-0020	Cam Screw	1
92701-0140	Oil Seal	1
SP2601-0459	Bearing	2
29357-0000	Shaft	1
11835-0000	Cover	1

JABSCO M25-30 / 30-60 / 3HD20 / 80T

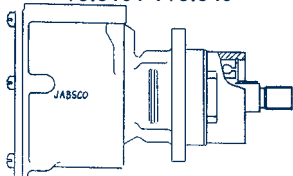


29450-1101 / 1201

Perkins # 1450 16941

Jabco #	Description	Qty
18673-0001	Impeller	1
92700-0050	Water Seal	1
2995-0000	Gasket	1
11830-0000	End Cover	1
91002-0010	Cover Screws	6
2907-0001	Cam	1
91002-0020	Cam Screw	1
Sp2601-0457	Ball Bearing	2
92700-0050	Oil Seal	1
29457-0010	Shaft (1101)	1
29457-0020	Shaft (1201)	1
X4020-210A	Slinger	1

JABSCO V8.510 / TV8.540



21180 / 21180-05

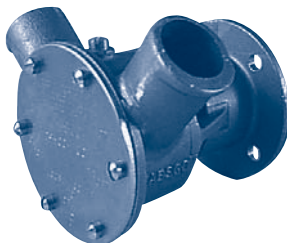
Perkins # 2488323

Jabco #	Description	Qty
836-0001	Impeller	1
6408-0000	Mechanical Seal	1
816-0000	Gasket	1
12062-0000	End Cover	1
91005-0040	Cover Screws	5
834-0001	Cam (21180)	1
91005-0040	Screw (21180)	1
2551-0000	Cam (21180-05)	1
91005-0050	Screw (21180-05)	1
2574-0000	Wearplate	1
92601-0300	Ball Bearing	2
SP2701-51	Oil Seal	1

Perkins Impeller Cross Reference

Perkins Part #	Depco Part #
0460024	JA 920-0001
0460027	JA 836-0001
0460038	JA 1210-0001
24880031	JA 920-0001
24880178	SH 9959K
24880190	JA 1210-0001
24880194	JA 18673-0001
24880272	JA 4528-0001
NA900010	SH 9959K
NA900012	SH 10615K

JABSCO 4.99M / PRIMA



29500-1001 / 1201

Perkins # 2488A401

Jabco #	Description	Qty
1210-0001	Impeller	1
3298-0000	Gasket	1
SP2700-1027	Seal	1
91002-0020	Cover Screw	6
490-0001	Cam	1
91003-0010	Cam Screw	1
SP2700-1027	Oil Seal	1
SP2601-0451	Bearing	2
29508-0000	Shaft (1001)	1
29518-0000	Shaft (1201)	1
7883-0000	Wearplate	1
11830-0000	Cover	1

JABSCO 4107 / 4108 Engines

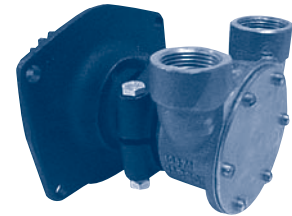


9970-200

Perkins

Jabco #	Description	Qty
1210-0001	Impeller	1
3298-0000	Gasket	1
18753-0049	Mechanical Seal Assy	1
91002-0020	End Cover Screw	6
11830-0000	End Cover	1
490-0001	Cam	1
91003-0010	Cam Screw	1
7883-0000	Wearplate	1
3180-0000	Slinger	1
92700-0060	Lip Seal	1
92600-0130	Bearing	2
9977	Shaft	1
3376-0000	Adaptor Ring	1
3278-0000	Coupling	1

JABSCO 4236 / M80 Engine



**10970 (Threaded Ports)
10970-21 (Flanged Ports)**

Perkins # 2488322 / 2488324

Part #	Description	Qty
1210-0001	Impeller	1
11830-0000	Cover	1
18753-0049	Seal Assy	1
7883-0000	Wearplate	1
490-0001	Cam	1
91003-0010	Cam Screw	1
91002-0020	Cover Screw	6
3298-0000	Gasket	1
92600-0130	Ball Bearing	2
92700-0060	Bearing Seal	1
SH 4258	Snap Ring	1
9977	Shaft (4 11/16")	1
9977-01	Shaft (5 1/4")	1
9977-21	Shaft (5 3/8")	1
3286-0000	Slinger	1