

WESTERBEKE ENGINE PUMPS

CONTENTS

PUMPING PRINCIPLES

ENGINE COOLING

ENGINEERING TABLES

TROUBLE-SHOOTING GUIDE

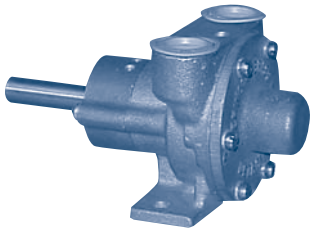
INDEX

HOME

NEXT

BACK

SHERWOOD Pulley Drive

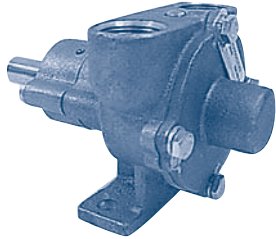


R30G-1

Westerbeke # 24102

Part #	Description	Qty
10077K	Impeller	1
11367	Seal Assy	1
4306	Ball Bearing	1
11854	Shaft	1
10285	Cam	1
10195	Cam Screw	1
10197	Housing Gasket	1
10286	Cover Gasket	1
2075G	Carbon Bushing	1
10281	Cover with Bushing	1
10198	Ball Brg Hzg	1
4303	Snap Ring (LG)	1
4304	Snap Ring (SM)	3
1311	Pin	2
336	Drain Plug	1
10093	Impeller Key	1
11847-0000	Pulley Key	1

SHERWOOD Pulley Drive

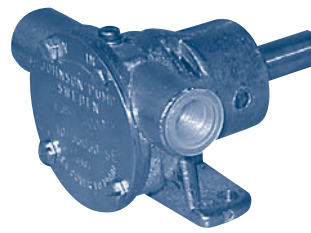


R-10870

Westerbeke # 11353 / 38445

Part #	Description	Qty
9959K	Impeller	1
10927	Seal Assy	1
4257	Ball Bearing	1
10852	Shaft	1
15883	Cam	1
10103	Cover Gasket	1
10171	Housing Gasket	1
6333G	Carbon Bushing	1
1482	Cover Screws	4
12710	Lock Washer	4
10096	Cover with Bushing	1
4432	Key	1
1311	Pin	2
336	Drain Plug	1
4258	Snap Ring (SM)	3
4259	Snap Ring (LG)	1

JOHNSON Pulley Drive

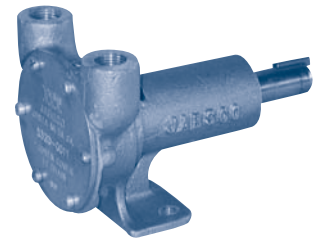


10-35038-5E

Westerbeke # 32617

Part #	Description	Qty
808B	Impeller	1
01-45069	Shaft	1
01-43239	End Cover	1
01-43240	Gasket	1
01-42910	Cam	1
01-45050	Inner Spacer	1
01-45049	Outer Spacer	1
05-04-642	Cover Screw	4
05-04-114	Cam Screw	1
05-29-139	Seal	1
05-06-513	O-Ring	2
05-08-130	Ball Bearing	2
05-34-131	Snap Ring (LG)	1
01-45087	Wearplate	1
05-01-120	Cam Scr. Washer	1
05-34-501	Snap Ring (SM)	1

JABSCO Pulley Drive

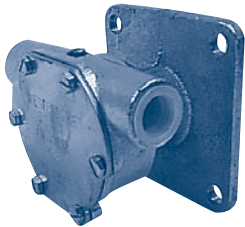


5320-0011

Westerbeke # 11830

Part #	Description	Qty
5616-0001	Impeller	1
91002-0020	Cover Screw	6
11830-0000	End Cover	1
2995-0000	Gasket	1
7895-0001	Cam & Wearplate	1
92700-0420	Seal - Water	1
93000-0070	Brg Seal Inner	1
92700-0310	Brg Seal Outer	1
92000-0540	O-Ring	1
879-0000	Slinger	1
91002-0090	Cam Screw	1
6020-0000	Shaft & Brg	1
91701-0040	Snap Ring	1
9215-0010	Drive Key	1

JOHNSON Flange Mount

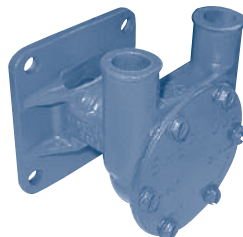


37431

Westerbeke # 33636 and # 37431

Part #	Description	Qty
810B	Impeller	1
05-08-130	Ball Bearing	2
05-04-114	Cam Screw	1
05-01-120	Cam Scr. Washer	1
05-29-139	Seal	2
01-45955	Seal Spacer	1
01-42389	Cam	1
01-45284	Gasket	1
01-45282	End Cover	1
05-04-642	Cover Screw	6
WB 34460	Shaft	1
WB 30326	Mtg Gasket	1
05-34-131	Snap Ring	1

SHERWOOD Flange Mount



H-70

Westerbeke # 24143

Part #	Description	Qty
10077K	Impeller	1
11628	Lip Seal	2
11882	Shaft	1
10285	Cam	1
10286	Gasket	1
11518	Carbon Bushing	1
10093	Impeller Key	1
7070	Slinger	1
12863	Snap Ring	2
10593	Cover	1
10195	Cam Screw	1
13293	Cover Screws	6
WB 30326	Mtg Gasket	1

SHERWOOD Flange Mount

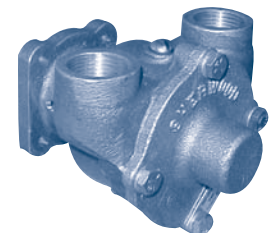


F-85

Westerbeke # 16423

Part #	Description	Qty
9959K	Impeller	1
9919	Cover Screw	4
12444	Shaft	1
4432	Key	1
12220	Cover	1
10072	Cam	1
10515C	Cam Screw	1
11360A	Gasket	1
10514C	Seal	1
12211	Ball Bearing	2
12710	Lock Washer	4
WB 11143	Mtg Gasket	1

SHERWOOD Flange Mount



F-95

Westerbeke # 16432

Part #	Description	Qty
10615K	Impeller	1
1482	Cover Screw	4
12710	Lock Washer	4
1311	Pin	2
10931	Gasket	1
10929	Cam	1
10927	Seal Assy	1
4259	Snap Ring (LG)	1
4258	Snap Ring (SM)	3
12226	Shaft	1
4257	Ball Bearing	1
7070	Slinger	1
4432	Key	1
336	Drain Plug	1
10183	Cover with Bushing	1
06333	Carbon Bushing	1
12226	Shaft	1