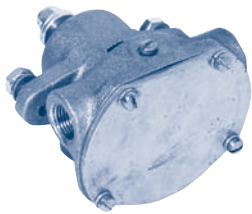


KOHLER ENGINE PUMPS

SHERWOOD 4 - 6 1/2 KW Gas



G-907

Kohler # 344371

Part #.....	Description	Qty
9000K.....	Impeller.....	1
22546.....	Seal Assy.....	1
12211.....	Ball Bearings.....	2
21861.....	Shaft.....	1
18663.....	Cam.....	1
19964.....	O-Ring.....	1
10195.....	Cam Screw.....	1
4258.....	Snap Ring (SM).....	1
4259.....	Snap Ring (LG).....	1
21858.....	Pulley Nut.....	1
19965.....	End Cover.....	1
12686.....	Cover Screws.....	4
13777.....	Impeller Key.....	1

SHERWOOD 4 - 6 Cylinder Diesel / 12.5 KW Gas

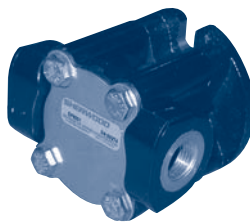


G-906 P/G-907 P

Kohler # 267373 / 246489 / 344089

Part #.....	Description	Qty
9000K.....	Impeller.....	1
18570.....	Seal Assy. (G-906P).....	1
22546.....	Seal Assy. (G-907P).....	1
12211.....	Ball Bearings.....	2
18569.....	Shaft (G-906P).....	1
21861.....	Shaft (G-907P).....	1
18663.....	Cam.....	1
19964.....	O-Ring.....	1
10195.....	Cam Screw.....	1
4258.....	Snap Ring (SM).....	1
4259.....	Snap Ring (LG).....	1
19967.....	Pulley (G-906P).....	1
21859.....	Pulley (G-907P).....	1
21858.....	Pulley Nut.....	1
19965.....	End Cover.....	1
12686.....	Cover Screws.....	4
13777.....	Impeller Key.....	1

SHERWOOD 5 - 7 KW Diesel

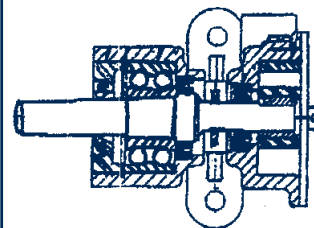


GP8001

Kohler # 359341

Part #.....	Description	Qty
8000k.....	Impeller.....	1
23447.....	Cover O-Ring.....	1
23459.....	Seal Assembly.....	1
23323.....	Ball Bearing.....	2
23443.....	Snap Ring (SM).....	1
23325.....	Snap Ring (LG).....	1
23366.....	Cover.....	1
23367.....	Cover Screws.....	4
23445.....	Shaft.....	1

JABSCO 2.5R27



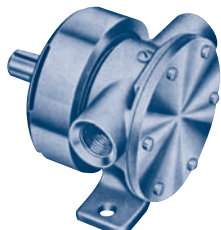
14270-0001

Part #.....	Description	Qty
14787-0001.....	Impeller.....	1
1040-0000.....	Seal.....	1
1039-0000.....	Bearing Seal (Pulley Side).....	1
1040-0000.....	Bearing Seal (Impeller Side).....	1
92600-0080.....	Ball Bearing.....	1
7338-0000.....	Gasket.....	1
8089-0000.....	Cam.....	1
6342-0000.....	Slinger.....	1
91002-0010.....	Screw.....	1
18717-0000.....	Snap ring.....	1

Kohler Impeller Cross Reference

Kohler Part #	Depco Part #
229826.....	SH 9000K
359978.....	SH 8000K
252882.....	JS 1027B
250872.....	YM 128296-42070

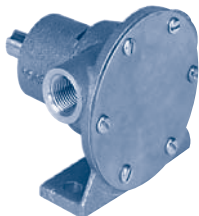
JABSCO 15 hp



**1673-9001 Old Style
(1/2" Ports)**

Part #.....	Description	Qty
1210-0001.....	Impeller - Neoprene.....	1
1210-0003.....	Impeller - Nitrile.....	1
11836-0000.....	End Cover.....	1
1835-0000.....	Gasket - Standard.....	1
2436-0000.....	Gasket - 1/2 Cam.....	1
91003-0010.....	Screw (Cam) - Standard.....	1
91003-0090.....	Screw (Cam) - 1/2 Cam.....	1
490-0000.....	Cam - Standard - Plastic.....	1
490-0001.....	Cam - Optional - Brass.....	1
2434-0000.....	Cam - 1/2 Cam - Brass.....	1
3078-0000.....	Bearing Shield.....	1
92600-0330.....	Ball Bearing.....	1
1161-0000.....	Rotating Shield.....	1
1554-0000.....	Stationary Slinger.....	1
1740-0000.....	Bearing Housing.....	1
91003-0010.....	Screw - End Cover.....	6
1737-0410.....	Shaft.....	1
9215-0010.....	Key.....	1
96080-0080.....	Seal - Mechanical.....	1
The following are used on Lip Seal Versions:		
3166-0000.....	Spacer.....	1
92700-0060.....	Seal.....	1
92000-0210.....	O-Ring.....	1

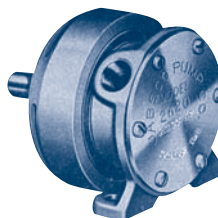
JABSCO 15hp



**1673-1001 New Style
(1/2" Ports)**

Part #.....	Description	Qty
1210-0001.....	Impeller - Neoprene.....	1
1210-0003.....	Impeller - Nitrile.....	1
90015-0001.....	Kit - Neoprene.....	1
90015-0003.....	Kit - Nitrile.....	1
18753-0134.....	Screw Kit (7) (Cam & End Cover).....	1
11836-0000.....	End Cover.....	1
18753-0133.....	O-Ring.....	1
92700-0060.....	Seal.....	1
490-0001.....	Cam - Full Thickness.....	1
2434-0000.....	Cam - Half Thickness.....	1
18753-0131.....	Retaining Ring.....	1
3286-0000.....	Slinger.....	1
18753-0130.....	Bearing.....	2
18753-0129.....	Shaft.....	1
18753-0132.....	Retaining Ring.....	1
9215-0010.....	Key.....	1

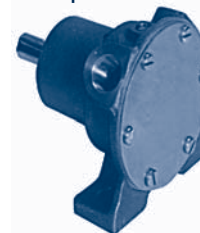
JABSCO 5hp



**2620-0001 Old Style
(3/8" Ports)**

Part #.....	Description	Qty
18673-0001.....	Impeller - Neoprene.....	1
18673-0003.....	Impeller - Nitrile.....	1
90020-0001.....	Kit - Neoprene.....	1
90020-0003.....	Kit - Nitrile.....	1
11830-0000.....	End Cover.....	1
2995-0000.....	Gasket.....	1
91010-0060.....	Screw - Impeller.....	1
92700-0050.....	Seal - Shaft.....	1
92000-0430.....	O-Ring.....	1
91002-0020.....	Screw - End Cover.....	6
2907-0000.....	Cam.....	1
91002-0090.....	Screw - Cam.....	1
3078-0000.....	Bearing Shield.....	1
92600-0330.....	Ball Bearing.....	1
1161-0000.....	Rotating Shield.....	1
1554-0000.....	Stationary Slinger.....	1
345-0000.....	Bearing Housing.....	1
11847-0000.....	Key - Shaft Drive.....	1
688-0240.....	Shaft.....	1

JABSCO 5hp - #A249861



**2620-1001 New Style
(3/8" Ports)**

Part #.....	Description	Qty
18673-0001.....	Impeller - Neoprene.....	1
18673-0003.....	Impeller - Nitrile.....	1
90020-0001.....	Kit - Neoprene.....	1
90020-0003.....	Kit - Nitrile.....	1
11830-0000.....	End Cover.....	1
18753-0125.....	O-Ring.....	1
92700-0050.....	Seal - Shaft.....	1
18753-0121.....	Screw Kit (7) for Cam & End Cover.....	1
2907-0000.....	Cam.....	1
92600-0130.....	Ball Bearing.....	2
18715-0000.....	Retaining Ring (Bearing Position).....	1
18753-0123.....	Retaining Ring (Bearing to Body).....	1
18753-0124.....	Shaft.....	1
11847-0000.....	Key - Shaft Drive.....	1
879-0000.....	Slinger.....	1

- CONTENTS
- PUMPING PRINCIPLES
- ENGINE COOLING
- ENGINEERING TABLES
- TROUBLE-SHOOTING GUIDE
- INDEX
- HOME
- NEXT
- BACK