

CATERPILLAR ENGINE PUMPS

CONTENTS

PUMPING PRINCIPLES

ENGINE COOLING

ENGINEERING TABLES

TROUBLE-SHOOTING GUIDE

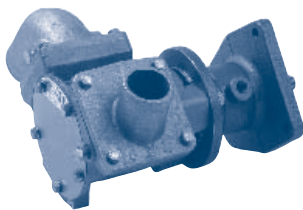
INDEX

HOME

NEXT

BACK

SHERWOOD 3176

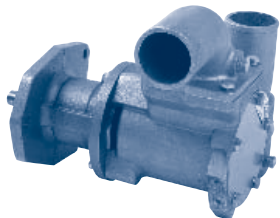


G1801 / G1805

CAT # 100-6441 (G1801)
CAT # 123-0500 (G1805)

Part #	Description	Qty
18000K	Impeller	1
19878	Mechanical Seal	1
19866	Seal Washer	1
21561	Quad Ring Gasket	2
19837	End Cover	1
19626	Cover Screw	5
19829	Cam Liner (1801)	1
21106	Cam Liner (1805)	2
15944	Washers	13
19869	Oil Seal	1
19835	Oil Seal Washer	1
19871	Lg. Ball Bearing	1
19872	Sm. Ball Bearing	1
19870	Bearing Spacer	1
19867	Lg. Snap Ring	1
19762	Sm. Snap Ring	2
19836	Wearplate	1
21566	Wearplate Pin (1805)	1
19868	Slinger	1
19830	Shaft	1
21172	Body Bolt	3
21845	Port O-Ring (1805)	2

SHERWOOD 3406 / 3406C

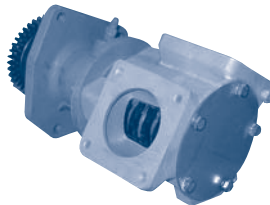


G1804 / G1806 / G18061

CAT # 112-6177 (G1804)
CAT # 130-1160 / 201-0956 (G1806)

Part #	Description	Qty
18000K	Impeller	1
19878	Mechanical Seal	1
23837	Upgrade Mechanical Seal	1
19866	Seal Washer	1
21561	Quad Ring Gasket	2
19837	End Cover	1
19626	Cover Screw	5
21533	Cam Liner	2
15944	Washers	13
19869	Oil Seal	1
19835	Oil Seal Washer	1
19871	Lg. Ball Bearing	1
19872	Sm. Ball Bearing	1
19870	Bearing Spacer	1
19867	Lg. Snap Ring	1
19762	Sm. Snap Ring	2
19836	Wearplate	1
21566	Wearplate Pin	1
19868	Slinger	1
21526	Shaft	1
21172	Body Bolt	3
21845	Port O-Ring (1806)	2

SHERWOOD 3196

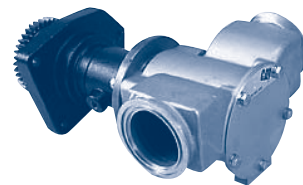


G1807 / G18071

CAT # 123-0471 / 197-1328

Part #	Description	Qty
18000K	Impeller	1
19878	Mechanical Seal	1
23837	Upgrade Mechanical Seal	1
19866	Seal Washer	1
21561	Quad Ring Gasket	2
19837	End Cover	1
19626	Cover Screw	5
21106	Cam Liner	2
15944	Washers	13
19869	Oil Seal	1
19835	Oil Seal Washer	1
19871	Lg. Ball Bearing	1
19872	Sm. Ball Bearing	1
19870	Bearing Spacer	1
19867	Lg. Snap Ring	1
19762	Sm. Snap Ring	2
19836	Wearplate	1
21566	Wearplate Pin	1
19868	Slinger	1
21526	Shaft	1
21172	Body Bolt	3
21845	Port O-Ring	2

SHERWOOD 3406E

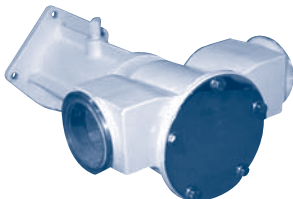


G1808 / G18081

CAT # 131-8272 / 196-8895

Part #	Description	Qty
18000K	Impeller	1
19878	Mech. Seal	1
23837	Upgrade Mechanical Seal	1
21561	Quad Ring Gasket	2
19837	End Cover	1
19626	Cover Screw	5
21533	Cam Liner	2
15944	Washers	5
23045	Oil Seal	1
19835	Oil Seal Washer	1
19871	Ball Bearing	2
19871	Lg. Snap Ring	1
19762	Sm. Snap Ring	2
19836	Wearplate	1
21566	Wearplate Pin	1
19868	Slinger	1
22782	Shaft	1
21172	Body Bolt	3

SHERWOOD 3412

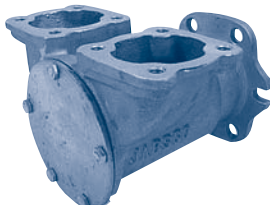


G2201 / G22011

CAT # 147-7850 / 212-7264

Part #	Description	Qty
22000K	Impeller	1
23111	Quad-ring	1
23087	Mechanical Seal	1
23058	Shaft	1
23089	Bearing	2
23090	Ext. Ret. Ring	1
23092	Spacer	1
23091	Int. Ret. Ring	1
23088	Lip Seal	1
23115	Ext. Ret. Ring	1
23112	Wearplate	1
21566	Pin	1
22453	Cam Liner	1
23113	Cover Plate	1
23211	Bolt	4
19626	Hex Head Bolt	5
15944	Lock Washer	9
23181	Gear	1
23194	Bolt	1
23195	Washer	1
23196	Washer	1

JABSCO 353 / 343

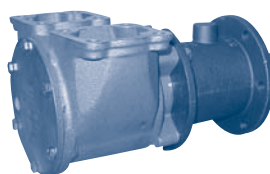


6980

CAT # 4L5788

Part #	Description	Qty
17936-0001	Impeller	1
91005-0040	Cover Screw	5
12062-0000	Cover	1
816-0000	Gasket	1
6408-0000	Mechanical Seal	1
2574-0000	Wearplate	1
DD 5196169	Shaft	1
DD 519BRG	Ball Bearing	1
18718-0000	Snap Ring	1
91402-0230	Key	1
DD 23501662	Mounting Gasket	1
817-0000	Bearing Seal	1
3181-0000	Slinger	1
6988-0000	Cam	1
91005-0040	Cam Screw	1
DD 5115395	Square Port Gasket	2
DD 5112143	Round Port Gasket	2

JABSCO D-336 / D-343 / D-353



17360-1001

CAT # 3N1888

Part #	Description	Qty
17370-0001	Impeller	1
17365-1000	Gasket	1
91005-0040	Cover Screw	6
17374-1000	Cam Ring	1
96080-0371	Mechanical Seal	1
18754-1004	O-Ring	1
92701-0180	Bearing Seal	1
91402-0230	Key	1
DD 23501662	Mounting Gasket	1
18725-0000	Snap Ring	1
17366-1000	Shaft	1
18752-0000	Ball Bearing	2
17372-1000	Wearplate	2
18721-0000	Seal Snap Ring	1
17378-1000	Cover	1
91112-0020	Pin (Wearplate)	1

JABSCO



18790-0001

CAT # 9Y5427

Part #	Description	Qty
18786-0001	Impeller	1
18785-0000	Cam Ring	1
96080-0371	Mechanical Seal	1
18754-1004	Seal O-Ring	1
18784-2000	End Cover	1
18787-0000	Wearplate	1
18721-0000	Snap Ring (SM)	1
18725-0000	Snap Ring (LG)	1
18785-ORING	O-Ring	1
18752-0000	Ball Bearing	2
92701-0180	Bearing Seal	1