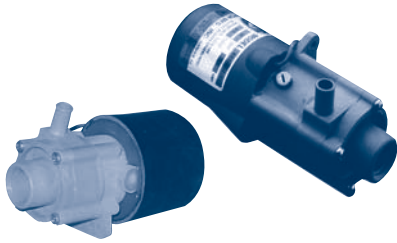


# REFRIGERATION PUMPS

## MARCH



## MARCH PUMPS FOR GRUNERT, ADLER-BARBOUR AND OTHERS

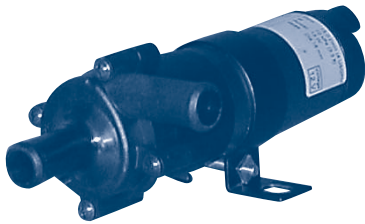
Grunert P800 = MA 893-04-1/2 (brushless upgrade MA 893-09 1/2)

Adler-Barbour E1390 = MA 893-04 (brushless upgrade MA 893-09)

Technicold TE-27 = MA 893-04 (brushless upgrade MA 893-09)

Model Number	Volts	Amps	GPM at Feet of Head			Max. Head	Ports	
			1'	3'	6'		Inlet	Outlet
MA 893-04	12 vdc	1.0	2.7	2.4	2.0	10.5'	3/8" FPT	3/8" OD
MA 893-04-1/2	12 vdc	1.0	2.7	2.4	2.0	10.5'	3/8" FPT	1/2" OD
MA 893-06	24 vdc	0.6	2.7	2.4	2.0	10.5'	3/8" FPT	3/8" OD
MA 893-09	12 vdc	1.0	2.7	2.4	2.0	10.5'	3/8" FPT	3/8" OD
MA 893-09-1/2	12 vdc	1.0	2.7	2.4	2.0	10.5'	3/8" FPT	1/2" OD
MA 893-10	24 vdc	0.6	2.7	2.4	2.0	10.5'	3/8" FPT	3/8" OD

## JABSCO / JOHNSON



## JABSCO/JOHNSON MAGNETIC DRIVE CENTRIFUGAL PUMPS

Brand	Model Number	Volts D.C.	Max Amps	GPM at 3 Feet of Head	Port Size
Jabasco	JA 59500-0012	12	1.2	4.0	3/4" barb
Jabasco	JA 59500-0024	24	0.7	4.0	3/4" barb
Johnson	JS 10-24487-03	12	1.0	3.7	3/4" barb
Johnson	JS 10-24487-04	24	0.6	3.7	3/4" barb
Johnson	JS 10-24486-11	12	0.9	3.3	5/8" barb
Johnson	JS 10-24504-03	12	2.2	7.1	3/4" barb
Johnson	JS 10-24504-04	24	0.9	7.1	3/4" barb

## MARCH



## MARCH CONTINUOUS DUTY FOR GRUNERT AND OTHERS

Grunert P900 = MA 809BRC-HS-12 ("C" stands for center inlet)

Model Number	Volts D.C.	Amps	GPM at Feet of Head			Max. Head	Ports	
			0'	3'	6'		Inlet	Outlet
MA 809BR-12	12 vdc	0.9	5.5	2.0	-	7.1'	1/2" MPT	1/2" MPT
MA 809BR HS-12	12 vdc	2.7	7.5	5.1	4.7	15.5'	1/2" MPT	1/2" MPT
MA 809BRC HS-12	12 vdc	2.7	7.5	5.1	4.7	15.5'	3/4" MPT	1/2" MPT
MA 809BR-24	24 vdc	0.5	5.5	2.0	-	7.1'	1/2" MPT	1/2" MPT
MA 809BR HS-24	24 vdc	1.5	7.5	5.1	4.7	15.5'	1/2" MPT	1/2" MPT
MA 809BRC HS-24	24 vdc	1.5	7.5	5.1	4.7	15.5'	3/4" MPT	1/2" MPT

## FLOJET / SHURFLO

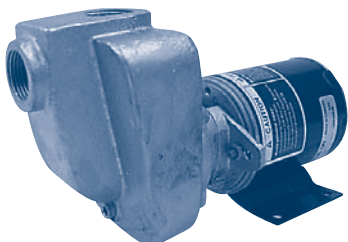


## FLOJET AND SHURFLO SELF-PRIMING DIAPHRAGM PUMPS

These Flojet and Shurflo self-priming diaphragm pumps will lift up to 6 feet, run dry without damage, and deliver up to 1.5 gpm. Each pump comes standard with quick connect 1/2" barbed ports. Additional port options are shown on page 58.

Model Number	Volts D.C.	Amps	GPM at Feet of Head			Max. Head	Ports*	
			1'	3'	6'		Inlet	Outlet
FJ 04105-512	12 vdc	1.2	1.5	1.5	1.5	50'	1/2" barb	1/2" barb
FJ 04105-524	24 vdc	0.9	1.5	1.5	1.5	50'	1/2" barb	1/2" barb
SF 8050-261-105	12 vdc	1.7	.5	.5	.5	70'	1/2" MPT	1/2" MPT

## PRIMO



## PRIMO SELF-PRIMING CENTRIFUGAL PUMPS

The Primo self-priming centrifugal pump will lift up to 3 feet and will not air lock. It is constructed of bronze, has 3/4" FPT inlet and outlet, and can deliver 1 - 17 gpm.

Model Number	Volts D.C.	Amps	GPM at Feet of Head			Max. Head	Ports	
			1'	3'	6'		Inlet	Outlet
DP Primo 12V	12 vdc	10.5	17	16.5	12	14'	3/4" FPT	3/4" FPT

CONTENTS

PUMPING PRINCIPLES

ENGINE COOLING

ENGINEERING TABLES

TROUBLE-SHOOTING GUIDE

INDEX

HOME

NEXT

BACK