

### SHERWOOD

Kohler 4 – 6 1/2 KW Gas



**G-907**

Kohler # 344371

Part #	Description	Qty.
9000K	Impeller	1
22546	Seal Assy.	1
12211	Ball Bearings	2
21861	Shaft	1
18663	Cam	1
19964	O-Ring	1
10195	Cam Screw	1
4258	Sm. Snap Ring	1
4259	Lg. Snap Ring	1
21858	Pulley Nut	1
19965	End Cover	1
12686	Cover Screws	4

### SHERWOOD

Kohler B – 12.5 KW Gas



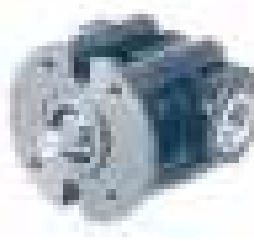
**G-906 P / G-907 P**

Kohler # 246489 / # 344089

Part #	Description	Qty.
9000K	Impeller	1
18570	Seal Assy. (G-906P)	1
22546	Seal Assy. (G-907P)	1
12211	Ball Bearings	2
18569	Shaft (G-906P)	1
21861	Shaft (G-907P)	1
18663	Cam	1
19964	O-Ring	1
10195	Cam Screw	1
4258	Sm. Snap Ring	1
4259	Lg. Snap Ring	1
19967	Pulley (G-906P)	1
21859	Pulley (G-907P)	1
21858	Pulley Nut	1
19965	End Cover	1
12686	Cover Screws	4

### SHERWOOD

Kohler 5 – 7 KW Diesel



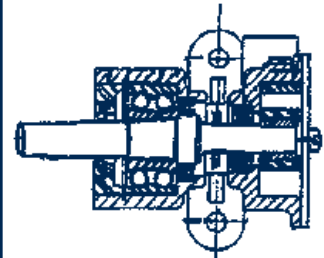
**GP8001**

Kohler # 359341

Part #	Description	Qty.
8000K	Impeller	1
23447	Cover O-ring	1
23459	Seal assembly	1
23323	Ball bearing	2
23443	Sm. snap ring	1
23325	Lg. snap ring	1
23366	Cover	1
23367	Cover screws	4
23445	Shaft	1

### JABSCO

Kohler 2.5R27



**14270-0001**

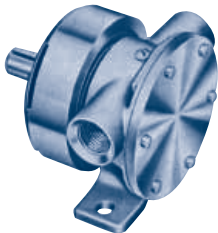
Part #	Description	Qty.
14787-0001	Impeller	1
1040-0000	Seal	1
1039-0000	Bearing Seal (Pulley Side)	1
1040-0000	Bearing Seal (Impeller Side)	1
92600-0080	Ball Bearing	1

#### Kohler Impeller Cross Reference

Kohler Part #	Depco Part #
229826	SH 9000K
359978	SH 8000K
252882	JS 1027B

### JABSCO

Kohler 15 hp



**1673-9001 Old Style  
(1/2" Ports)**

Part #	Description	Qty.
1210-0001	Impeller - Neoprene	1
1210-0003	Impeller - Nitrile	1
11836-0000	End Cover	1
1835-0000	Gasket - Standard	1
2436-0000	Gasket - 1/2 Cam	1
91003-0010	Screw (Cam) - Standard	1
91003-0090	Screw (Cam) - 1/2 Cam	1
490-0000	Cam - Standard - Plastic	1
490-0001	Cam - Optional - Brass	1
2434-0000	Cam - 1/2 Cam - Brass	1
3078-0000	Bearing Shield	1
92600-0330	Ball Bearing	1
1161-0000	Rotating Shield	1
1554-0000	Stationary Slinger	1
1740-0000	Bearing Housing	1
91003-0010	Screw - End Cover	6
1737-0410	Shaft	1
9215-0010	Key	1
96080-0080	Seal - Mechanical	1
The following are used on Lip Seal Versions:		
3166-0000	Spacer	1
92700-0060	Seal	1
92000-0210	O-Ring	1

### JABSCO

Kohler 15hp

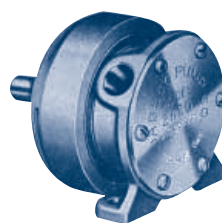


**1673-1001 New Style  
(1/2" Ports)**

Part #	Description	Qty.
1210-0001	Impeller - Neoprene	1
1210-0003	Impeller - Nitrile	1
90015-0001	Kit - Neoprene	1
90015-0003	Kit - Nitrile	1
18753-0134	Screw Kit (7) (Cam & End Cover)	1
11836-0000	End Cover	1
18753-0133	O-Ring	1
92700-0060	Seal	1
490-0001	Cam - Full Thickness	1
2434-0000	Cam - Half Thickness	1
18753-0131	Retaining Ring	1
3286-0000	Slinger	1
18753-0130	Bearing	2
18753-0129	Shaft	1
18753-0132	Retaining Ring	1
9215-0010	Key	1

### JABSCO

Kohler 5hp



**2620-0001 Old Style  
(3/8" Ports)**

Part #	Description	Qty.
18673-0001	Impeller - Neoprene	1
18673-0003	Impeller - Nitrile	1
90020-0001	Kit - Neoprene	1
90020-0003	Kit - Nitrile	1
11830-0000	End Cover	1
2995-0000	Gasket	1
91010-0060	Screw - Impeller	1
92700-0050	Seal - Shaft	1
92000-0430	O-Ring	1
91002-0020	Screw - End Cover	6
2907-0000	Cam	1
91002-0090	Screw - Cam	1
3078-0000	Bearing Shield	1
92600-0330	Ball Bearing	1
1161-0000	Rotating Shield	1
1554-0000	Stationary Slinger	1
345-0000	Bearing Housing	1
11847-0000	Key - Shaft Drive	1
688-0240	Shaft	1

### JABSCO

Kohler 5hp



**2620-1001 New Style  
(3/8" Ports)**

Part #	Description	Qty.
18673-0001	Impeller - Neoprene	1
18673-0003	Impeller - Nitrile	1
90020-0001	Kit - Neoprene	1
90020-0003	Kit - Nitrile	1
11830-0000	End Cover	1
18753-0125	O-Ring	1
92700-0050	Seal - Shaft	1
18753-0121	Screw Kit (7) for Cam & End Cover	1
2907-0000	Cam	1
92600-0130	Ball Bearing	2
18715-0000	Retaining Ring (Bearing Position)	1
18753-0123	Retaining Ring (Bearing to Body)	1
18753-0124	Shaft	1
11847-0000	Key - Shaft Drive	1
879-0000	Slinger	1