

NEXT

BACK

CATALOG OVERVIEW

PUMPING PRINCIPLES

ENGINE COOLING

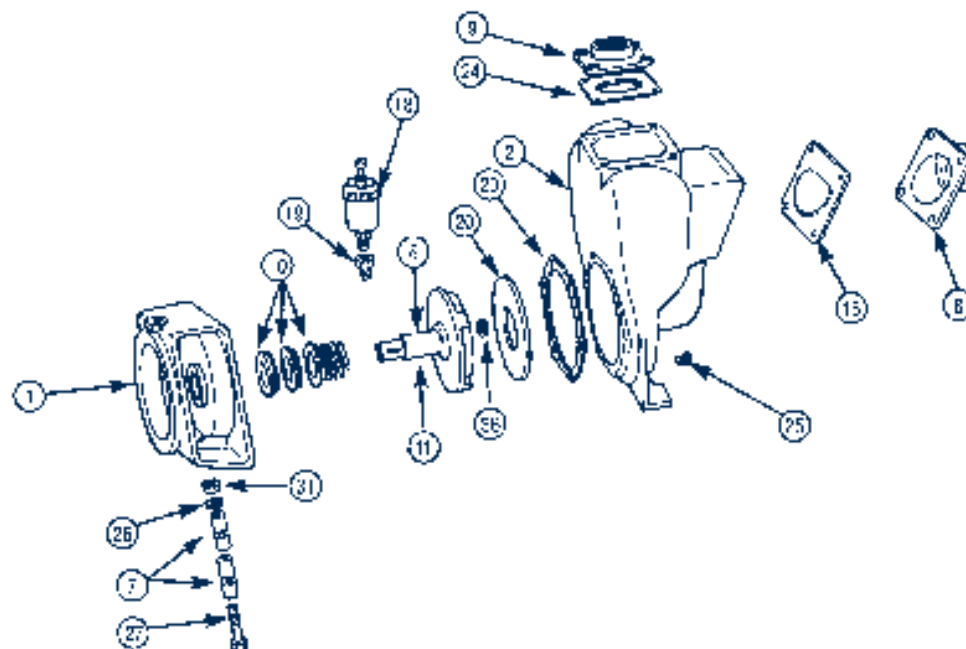
TROUBLESHOOTING GUIDE

ENGINEERING TABLES

INDEX

HOME

MP-FLOMAX 5, 8, 10 & 15 PARTS



Item	Description	FM 5 & 8 Bronze	FM 5 & 8 Cast Iron	FM 10 & 15 Bronze	FM 10 & 15 Cast Iron
1 & 2	Adaptor & Body Body to adaptor bolts/studs (6 required)	Call for number 24965	Call for number 24965	Call for number 21260 (stud), 21268 (nut)	Call for number 21260 (stud), 21268 (nut)
5	Impeller (trimming may be required) (We will trim to your diameter)	22292 (5" diameter)	22293 (5" diameter)	23385 (5-3/4" dia., 1-1/8" shaft bore) 23037 (5-3/4" dia., 1" shaft bore)	23386 (5-3/4" dia., 1-1/8" shaft bore) 23038 (5-3/4" dia., 1" shaft bore)
7	Clamp assembly	23002 (5/8" & 3/4") 23003 (7/8")	23002 (5/8" & 3/4") 23003 (7/8")	23039	23039
8	Inlet flange Flange bolts/studs (4 required)	22262 (1-1/2") 22386 (2") 21242	22263 (1-1/2") 22387 (2") 21242	22368 (2") 22467 (3") 21261 (stud), 21268 (nut)	22369 (2") 22468 (3") 21261 (stud), 21268 (nut)
9	Outlet Flange Flange bolts/studs (4 required)	22265 (1-1/2") 22310 (2") 21242	22266 (1-1/2") 22311 (2") 21242	22371 (2") 22470 (3") 21261 (stud), 21268 (nut)	22372 (2") 22471 (3") 21261 (stud), 21268 (nut)
10	Seal	22272	22272	22361	22361
11	Drive sleeve	25664 (7/8" bore) 22286 (3/4" bore) 22253 (5/8" bore)	25664 (7/8" bore) 22286 (3/4" bore) 22253 (5/8" bore)	Comes with impeller item #5	Comes with impeller item #5
15	Flapper	23022	23022	23040	23040
20	Wearplate Wearplate screws (2 required) Wearplate screw gasket (2 required) Wearplate acorn nuts (2 required)	22271 21249 21248 21237	23024 21249 21248 21237	22375 21262 21271 26053	22376 21262 21271 21263
23	Gasket	22255	22255	22240	22240
24	Gasket	22256	22256	22358	22358
25	Pipe plug	21267	21267	21186	21267
26	Lockwasher	21238	21238	21266	21266
27	Screw	21264	21264	21269	21269
31	Hex nut	21284	21284	21268	21268
36	Impeller lock nut	22655	22655	Not required	Not required

FOR ENGINEERING AND PUMP SELECTION ASSISTANCE CALL DEPCO AT 1-800-445-1656