

**MARCH, LITTLE GIANT & FLOJET**



Part#	Description	Qty.
LC-5C	Complete wet end	1
0150-0030-0100	Impeller	1
0135-0007-0100	Cover o-ring	1
0130-0024-1000	Shaft	1
0130-0028-0100	Ceramic washer	1
0150-0032-1000	Cover	1
0150-0153-0100	Pump housing	1
0150-0020-1000	Mtr hsg o-ring	1
0125-0007-1000	Cooling tube seal	2
0150-0021-1000	Cover screw	7
0135-0016-1000	Washer	7

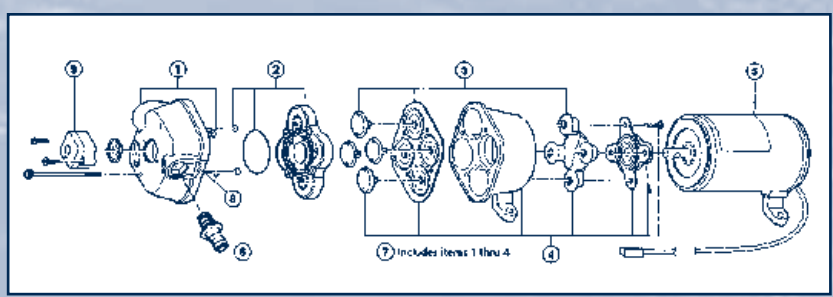
Part #	Description	Qty.
0135-0043-0100	Impeller	1
0135-0007-0100	Cover o-ring	1
0802-0043-1000	Shaft & hsg	1
0802-0057-1000	Impeller washer	1
0135-0042-1000	Impeller screw	1
0135-0117-1000	Cover	1
0135-0126-0100	Drive magnet	1
0135-0012-1000	Wing nut	4
0802-0010-1000	Housing screw	4
0620-0010-1000	Mtr mount washer	4
0150-0015-1000	Mtr mount screw	4

Part #	Description	Qty.
181140	Impeller	1
924007	Cover o-ring	1
181203	End cover w/ports	1
182005	Back housing	1
180057	Shaft	1
921077	Thrust washers	2
182602	Drive magnet	1
920003	Wing nuts	4
911403	Studs	4
977458	115 vac motor	1
977856	230 vac motor	1

Part #	Description	Qty.
183139	Impeller	1
924007	Cover o-ring	1
183065	End cover w/ports	1
182005	Back housing	1
180057	Shaft	1
921077	Thrust washers	2
183602	Drive magnet	1
920003	Wing nuts	4
911403	Studs	4
977410	115 vac motor	1
977910	230 vac motor	1

**4000 SERIES FLOJET PARTS**

Part Number	Description
20381-000	Quad Port x 1/2" M Qest, Straight
20381-002	Quad Port x 1/2" HB, Straight
20381-006	Quad Port x 3/4" HB, Straight
20381-007	Quad Port x GH Adaptor
29381-008	Quad Port x 1/2" M Qest, 90° Elbow
20381-009	Quad Port x 1/2" HB, 90° Elbow
20381-010	Quad Port x 3/4" HB, 90° Elbow
20381-024	Quad Port x 3/8" HP, 90° Elbow
20381-026	Quad Port x 3/8" HP, 90° Straight



KEY MODEL	1 UPPER HSG	2 VALVE ASSY	3 DIAPHRAGM	4 LOWER HSG	5 MOTOR	7 PUMP HEAD	8 SLIDE CLIPS	9 BASE PLATE
4105-114	20404-005	20407-010	20403-050	20419-003	2009-038A	20406-005A	20408-000	—
4105-314	20404-005	20407-010	20403-050	20419-003	2019-010A	20406-005A	20408-000	—
4105-414	20404-005	20407-010	20403-050	20419-003	N/A	20406-005A	20408-000	—
4105-143	20404-004	20407-030	20403-040	20419-001	2009-073A*	20406-004A	20408-000	—
4105-343	20404-004	20407-030	20403-040	20419-001	2019-025A*	20406-004A	20408-000	—
4105-501	20404-005	20407-010	20403-050	20419-005	2009-079A*	20406-013A	20408-000	—
4105-502	20404-005	20407-010	20403-050	20419-003	2009-042A	20406-014A	20408-000	—
4105-503	20404-004	20407-030	20403-040	20419-005	2019-026A*	20406-013A	20408-0000	—
4105-512	20404-004	20407-030	20403-040	20419-001	02019-025A	20406-004A	20405-000	—
4105-524	20404-004	20407-030	20403-040	20419-001	02049-025A	20406-004A	20408-000	—
4305-143	20404-003	20407-030	20403-040	20419-002	2009-027A	20406-002A	20408-000	2090-118
4305-144	20404-003	20407-030	20403-040	20419-011	2009-087A*	20406-011A	20408-000	2090-118
4305-343	20404-003	20407-030	20403-040	20419-002	2019-006A	20406-002A	20408-000	2090-118
4305-443	20404-003	20407-030	20403-040	20419-002	N/A	20406-002A	20408-000	2090-118
4305-500	20404-008	20407-030	20403-040	20419-001	2009-073A*	20406-007A	20408-000	2090-104
4305-501	20404-008	20407-030	20403-040	20419-001	2019-023A*	20406-007A	20408-000	2090-104
4305-502	20404-012	20407-030	20403-040	20419-000	2019-023A*	20406-012A	20408-000	2090-108
4305-503	20404-012	20407-030	20403-040	20419-000	2009-074A*	20406-012A	20408-000	2090-108
4405-143	20404-002	20407-030	20403-040	20419-001	2009-073A*	20406-003A	20408-000	2090-104
4405-343	20404-002	20407-030	20403-040	20419-001	2019-023A*	20406-003A	20408-000	2090-104
4405-443	20404-002	20407-030	20403-040	20419-001	2049-025A*	20406-003A	20408-000	2090-104
4125-114	20404-005	20407-010	20403-050	20419-003	2009-080A*	20406-005A	20408-000	—
4125-314	20404-005	20407-010	20403-050	20419-003	2019-027A*	20406-005A	20408-000	—
4125-414	20404-005	20407-010	20403-050	20419-003	2049-026A*	20406-005A	20408-000	—
4125-502	20404-005	20407-010	20403-050	20419-003	2009-080A*	20406-005A	20408-000	2090-118
4125-504	20404-005	20407-010	20403-050	20419-003	2019-027A*	20406-005A	20408-000	2090-118
4325-143	20404-003	20407-030	20403-040	20491-002	2009-080A*	20406-002A	20408-000	2090-118
4325-343	20404-003	20407-030	20403-040	20419-002	2019-027A*	20406-002A	20408-000	—
4325-443	20404-003	20407-030	20403-040	20419-002	2049-026A*	20406-002A	20408-000	—
4325-504	20404-003	20407-030	20403-040	20419-004	2009-080A*	20406-015A	20408-000	2090-118
R4515-743	20404-027	20407-030	20403-040	20419-004	R2009-128A	20406-037A	20408-000	2090-118
R4525-743	20404-028	20407-030	20403-040	20419-004	R2009-127A	20406-038A	20408-000	2090-118

\* Requires new mounting feet (FJ 20717-100A) when used with 3 ft. pumps.