

3A AND FDA COMPLIANT FLEXIBLE IMPELLER

CONTENTS

UP TO 100 GPM, 60 PSI

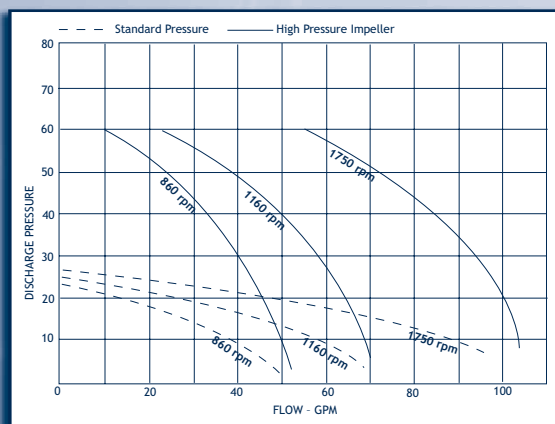
- Temperatures to 185°F
- Construction: polished sanitary 316SS housing with FDA compliant elastomers
- Mounting Options: AC and DC voltages, TEFC, washdown, explosion proof, gear reduction, variable speed drive and other custom configurations

INDEX

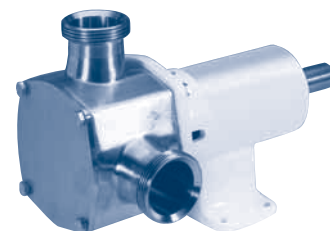
NEXT

BACK

HOME



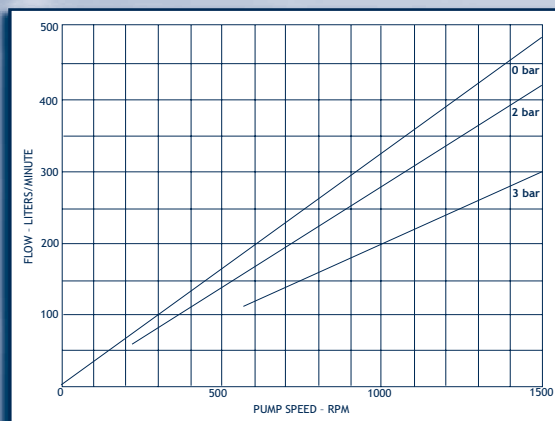
100 GPM 30580 SERIES



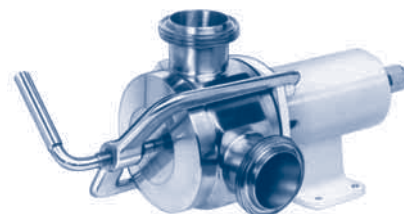
2" Sanitary Clamp or Acme Thread

UP TO 132 GPM, 43.5 PSI

- Temperatures to 185°F
- Construction: polished sanitary 316SS housing with FDA compliant elastomers
- Mounting Options: AC and DC voltages, TEFC, washdown, explosion proof, gear reduction, variable speed drive and other custom configurations



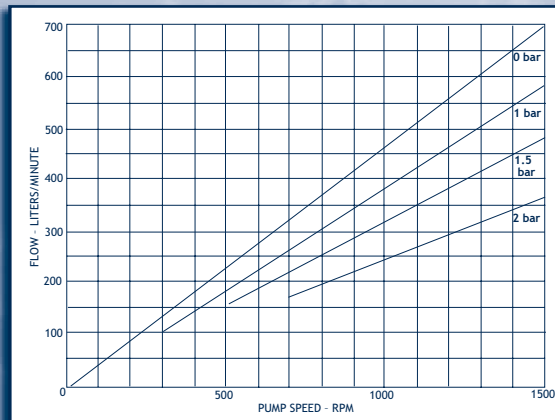
132 GPM 500 LITER SERIES



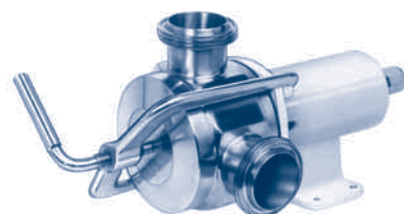
2.5" Sanitary Clamp or Acme Thread

UP TO 185 GPM, 29 PSI

- Temperatures to 185°F
- Construction: polished sanitary 316SS housing with FDA compliant elastomers
- Mounting Options: AC and DC voltages, TEFC, washdown, explosion proof, gear reduction, variable speed drive and other custom configurations



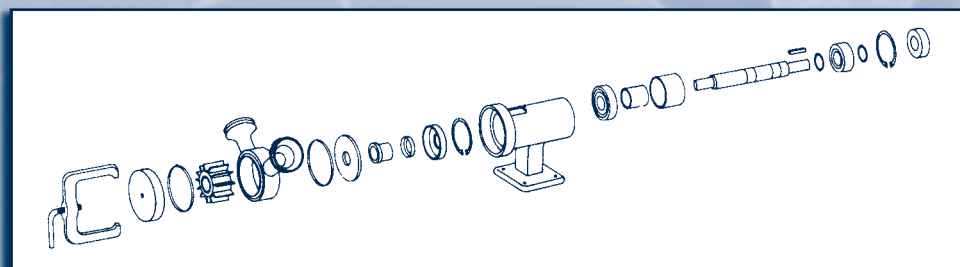
185 GPM 700 LITER SERIES



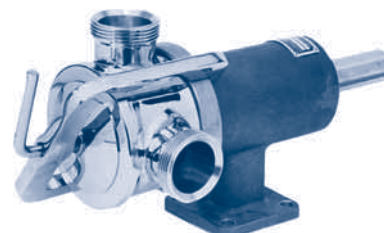
2.5" Sanitary Clamp or Acme Thread

SERVICE PARTS FOR ORIGINAL JABSCO MODELS

Thousands of these dependable pumps are still operating in the field. Many parts are still available to keep your pump up and running. The 305XX pump series will retrofit most applications. Call us for assistance.



15010-15070 SERIES (Discontinued Series)



1.5" and 2" Sanitary Clamp
or Acme Thread

NOTE: Curves show approximate head and flow for new pumps with neoprene impeller pumping water. Other impeller compounds may reduce performance.