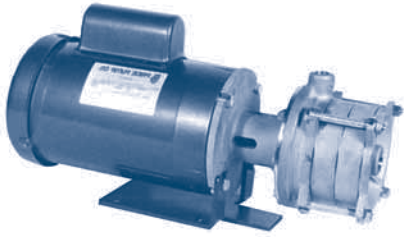
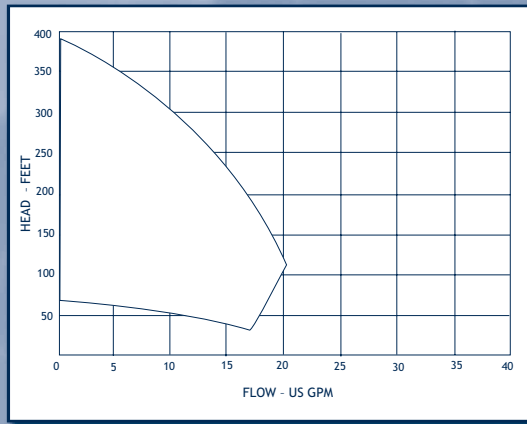


# MULTI-STAGE CENTRIFUGALS

## PRICE (MS 50 SERIES)



Stainless Multi-Stage



## UP TO 20 GPM, 380' TDH

- Temperature to 300° F
- Multi-stage enclosed impellers
- Construction: 316 stainless steel
- Elastomer Options: Viton®, EPR, Neoprene, Teflon®, silicon carbide, double seal, flush and quench
- Drive Options: pedestal, hydraulic, pneumatic, AC and DC voltages and multiple enclosures

CONTENTS

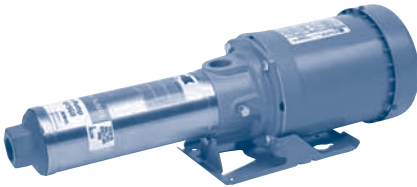
INDEX

NEXT

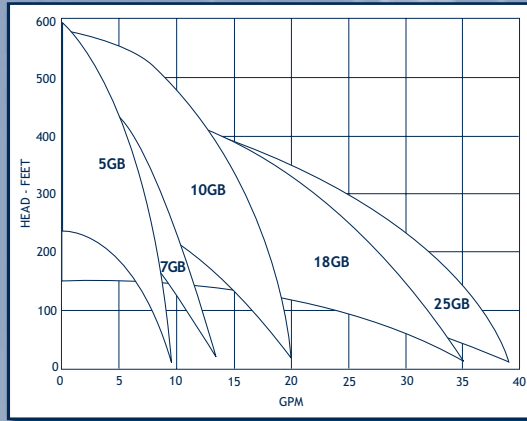
BACK

HOME

## GOULDS G & L



Multi-Stage GB Series



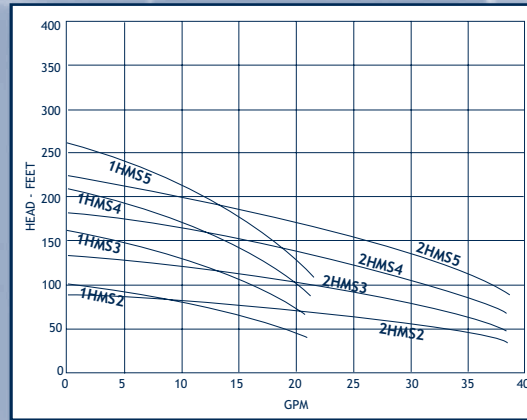
## UP TO 38 GPM, 600' TDH

- Temperatures to 160° F
- Cast iron or 304 stainless steel construction
- Several mechanical seal options
- Will pick up to a 10' suction lift with foot valve
- Single phase standard, three phase optional

## GOULDS G & L



Multi-Stage HMS Series



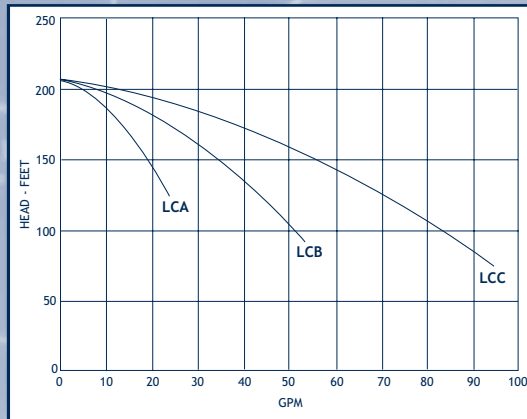
## UP TO 38 GPM, 239' TDH

- Temperatures to 230° F
- All 316 stainless steel construction
- Several motor options
- Hydraulically balanced floating impellers
- Compact, close coupled design
- Great for booster, filtration, reverse osmosis and spray services

## GOULDS G & L



Multi-Stage LC Series



## UP TO 95 GPM, 205' TDH

- Temperatures to 220° F
- Fabricated 304 stainless steel construction
- Several mechanical seal options
- Single and three phase, 50/60 hz motors
- Single and three phase motors – ODP and TEFC
- Compact, close coupled design