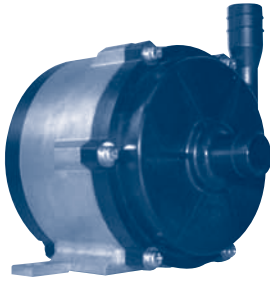
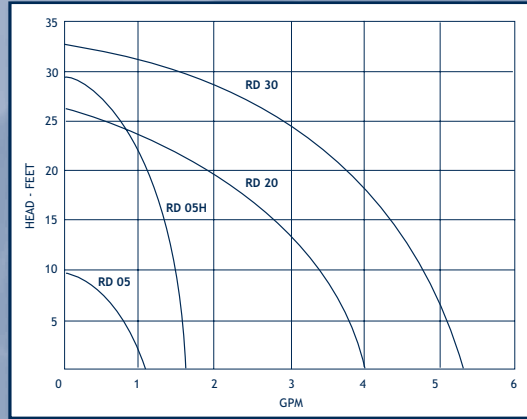


MAGNETIC DRIVE CENTRIFUGALS

IWAKI



RD Series



UP TO 5.3 GPM, 33' TDH

- Temperatures to 140 °F
- 24 vdc, brushless rotating magnetic field motor (no moving motor parts)
- Sealless design allows for indefinite run-dry operation
- Housing and impeller are Ziron® composite plastic
- Viton® and EPDM elastomers
- Great OEM pump for fuel cells, laser cooling, electronics, etc.

CONTENTS

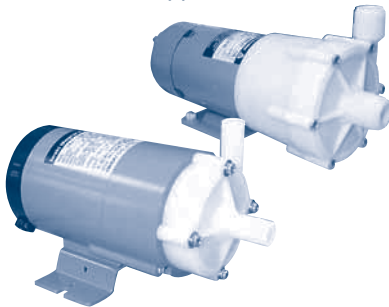
INDEX

NEXT

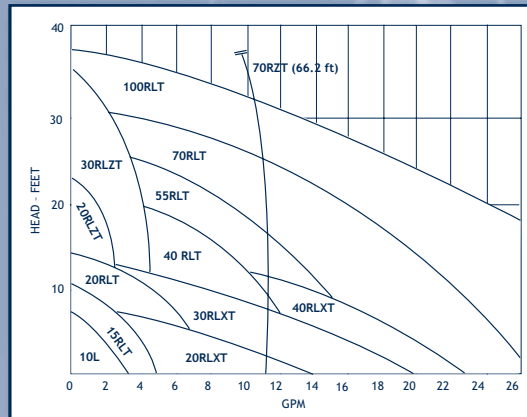
BACK

HOME

IWAKI



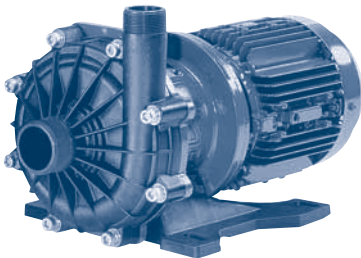
MD and WMD Series



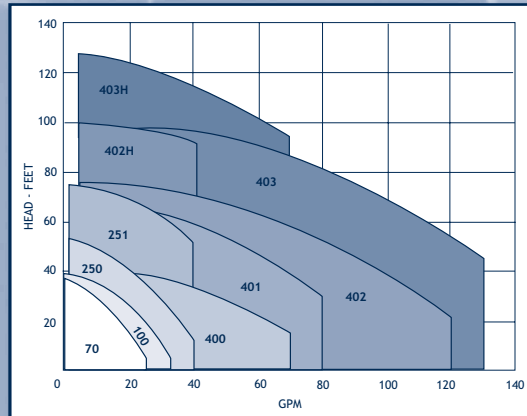
UP TO 36 GPM, 66' TDH

- Temperatures to 176 °F
- Will pump fluids with a specific gravity to 2.0
- Polypro or Fluoroplastic liquid end materials
- Viton® and EPDM elastomers
- Male NPT connections
- 115 vac, 60 hz single phase motors standard, DC and other AC voltages available

IWAKI



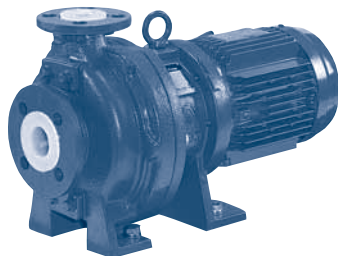
MX Series



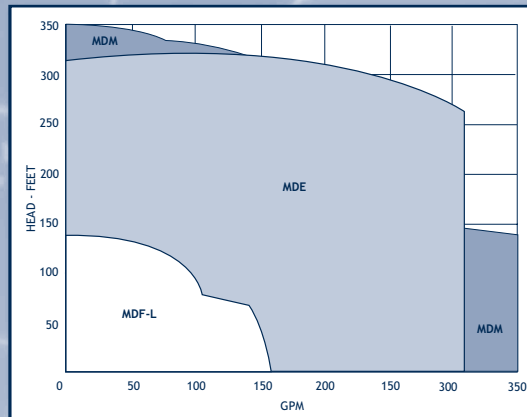
UP TO 134 GPM, 121' TDH

- Temperatures to 176 °F
- Will pump fluids with a specific gravity to 2.0
- Polypro or CFRETFE (carbon fiber re-enforced ETFE) liquid end materials
- Viton® and EPDM or Aflas® elastomer options
- Male NPT or ANSI flange ports
- Will accept 56C-145TC NEMA motors
- Dry run capable with standard carbon bearing

IWAKI



MDM, MDF-L and MDE Series



UP TO 350 GPM, 330' TDH

- Temperatures to 302 °F
- Dry run capable with standard carbon bearing
- MDM close coupled, MDF-L and MDE available close coupled or pedestal mounted
- Cast iron casing and covers ETFE or PFA liners
- Elastomers: PTFE, EPDM or Kalrez®
- Close coupled configurations accept NEMA C-face motors