

END SUCTION CENTRIFUGALS

CONTENTS

UP TO 180 GPM, 130' TDH

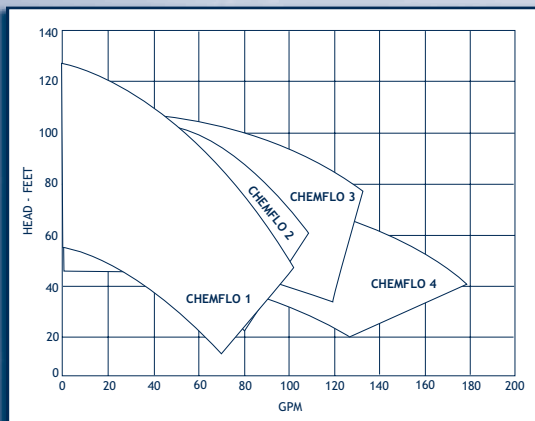
- Investment cast 316 stainless steel
- Viton® seal and o-rings standard
- Semi-open impeller design
- Utilizes NEMA 56C motors
- Frame mounted option
- Many optional seals and elastomers available

INDEX

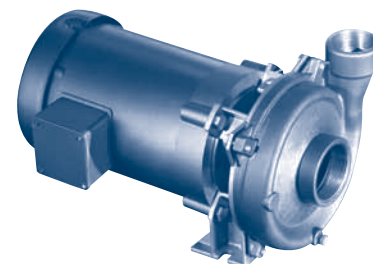
NEXT

BACK

HOME



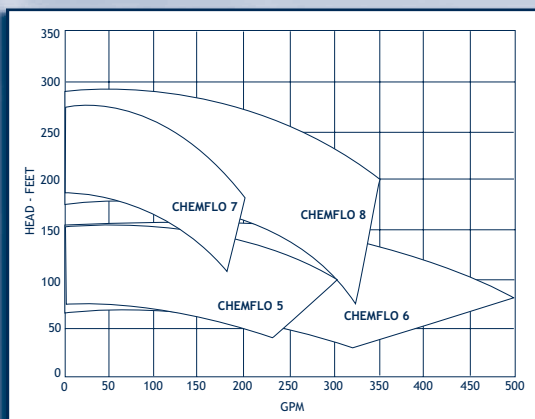
MP CHEMFLO



1, 2, 3 and 4 Series

UP TO 500 GPM, 280' TDH

- Investment cast 316 stainless steel
- Viton® seal and o-rings standard
- Semi-open impeller design
- Utilizes NEMA C-face motors
- Frame mounted options
- Many optional seals and elastomers available



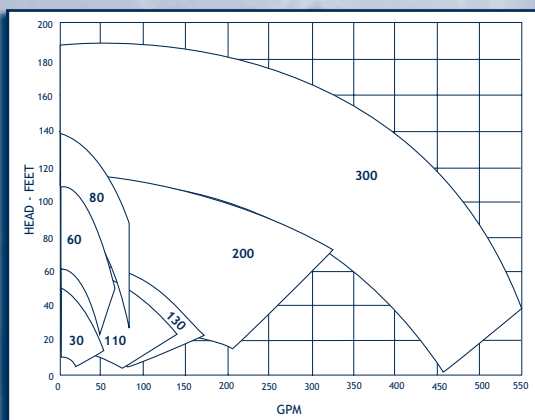
MP CHEMFLO



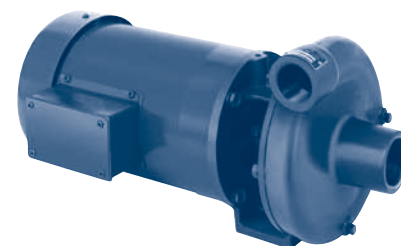
5, 6, 7 and 8 Series

UP TO 500 GPM, 190' TDH

- Cast iron, bronze or cast iron/SS fitted construction
- Viton® mechanical seals standard
- Stainless steel shaft sleeves and fasteners
- Close coupled configurations mount directly to standard NEMA C-face motors
- Other mounting options include gas or diesel engine, bearing pedestal for direct or pulley drive, hydraulic, air, or DC clutch



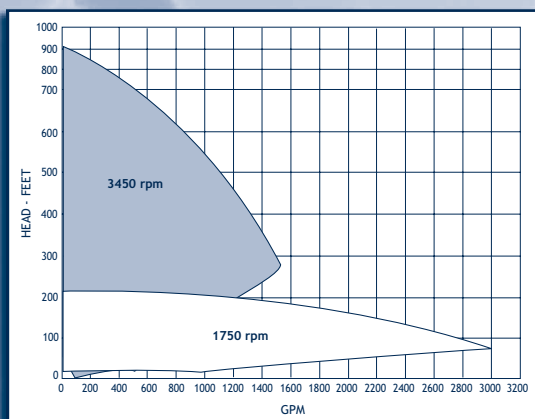
MP



30-300 Series

UP TO 3000 GPM, 915' TDH

- Up to 500° F with cooling option
- Ductile iron, 316SS, CD4MCU, Alloy 20, or Hastelloy C construction
- Several mechanical seal options
- Dimensionally interchangeable with other manufacturers ANSI pumps
- Bearing pedestal standard for direct or pulley drive; some sizes available to close couple to NEMA JM frame motors



GRISWOLD



811 ANSI Series