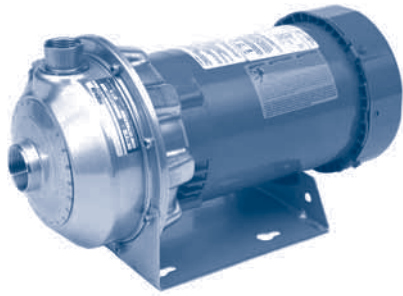
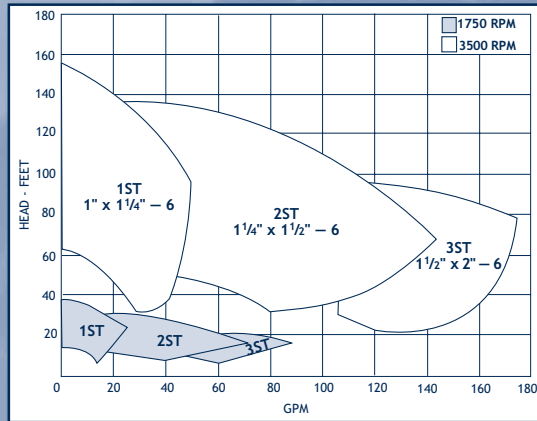


END SUCTION / IN-LINE CENTRIFUGALS

GOULDS G & L



NPE



UP TO 170 GPM, 150' TDH

- Enclosed impeller
- 316L SS construction
- Seal Options: multiple Type 21 mechanical seal choices
- NPT threaded ports
- 1/2 hp to 5 hp sizes
- Drive Options: electric motor (single phase, three phase, ODP, TEFC, explosion proof), pedestal mount or custom configuration

CONTENTS

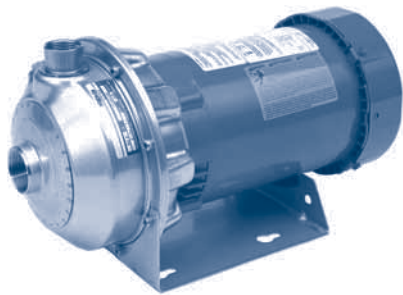
INDEX

NEXT

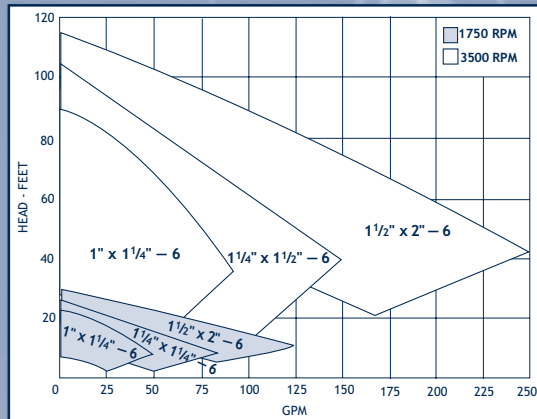
BACK

HOME

GOULDS G & L



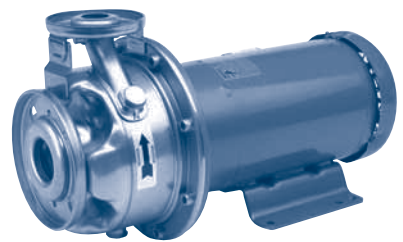
NPO



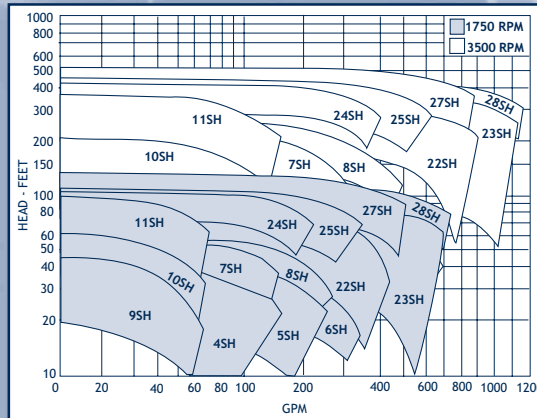
UP TO 250 GPM, 114' TDH

- Open, cast impeller
- 316L SS construction
- Seal options: multiple Type 21 mechanical seal choices
- NPT threaded ports
- 1/2 hp to 5 hp sizes
- Drive options: electric motor (single phase, three phase, ODP, TEFC, explosion proof), pedestal mount or custom configuration

GOULDS G & L



SSH



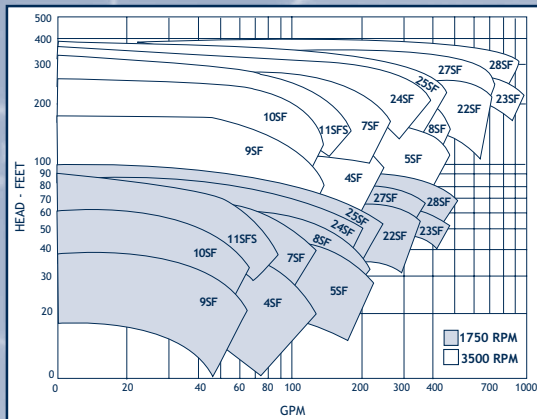
UP TO 1000 GPM, 490' TDH

- Enclosed impeller
- 316L SS construction
- Seal Options: multiple Type 21 mechanical seal choices
- 150# ANSI flange connections
- 1 hp to 100 hp sizes
- Drive Options: electric motor (single phase, three phase, ODP, TEFC, explosion proof), pedestal mount or custom configuration

GOULDS G & L



SFH (End Suction) and SFC (In-line)



UP TO 950 GPM, 400' TDH

- Enclosed impeller
- Cast iron 316L fitted construction
- Seal Options: multiple Type 21 mechanical seal
- 1 1/4" x 2" to 3" x 4" flanged ports, mate with 150 lb ANSI flanges
- 2 to 100 hp sizes
- Drive Options: pedestal mount, single and three phase, ODP, TEFC, explosion proof and custom conf.

Performance curves vary on SFC (In-line Series)