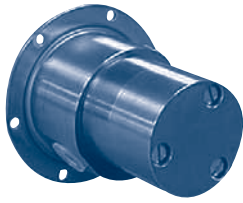
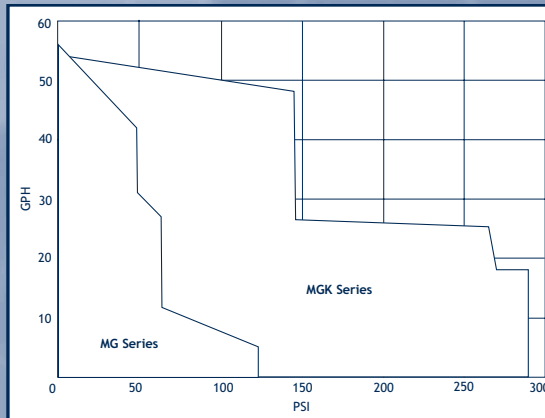


# MISCELLANEOUS GEAR PUMPS

## FLUID-O-TECH Mag Drive Gear



MG200 Series



## UP TO 57 GPH, 140 PSI

- Temperatures to 248° F
- Solid 316SS construction
- Gear materials in PEEK or PTFE
- Optional relief valve available
- 1/8" female NPT ports (MG Series)
- 1/4" female NPT ports (MGK Series)
- Will couple directly to IEC M56, M63 or NEMA 56C electric motors

CONTENTS

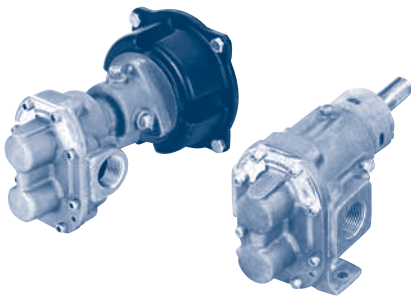
INDEX

NEXT

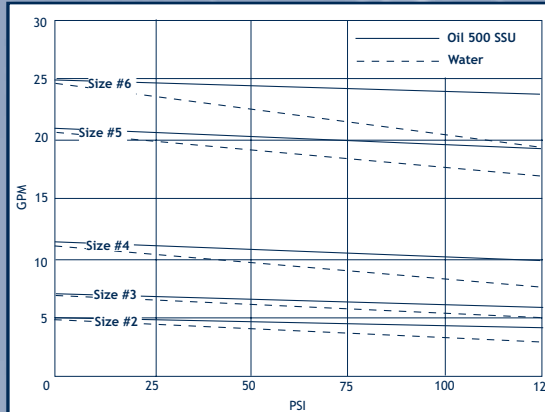
BACK

HOME

## SHERWOOD



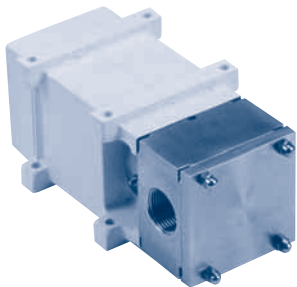
Cast Iron, Bronze, Stainless



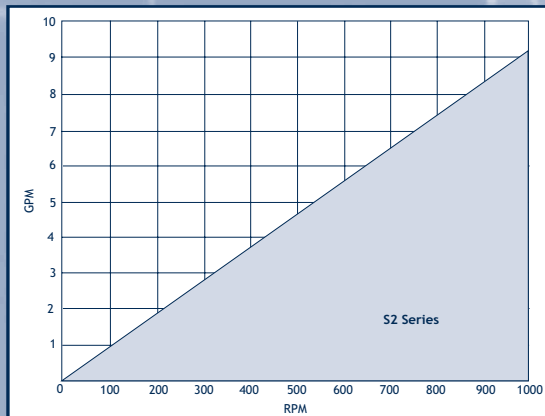
## UP TO 24 GPM, 200 PSI

- Temperatures to 400° F
- Viscosities to 100,000 SSU
- Seal Options: Buna, Viton® and Teflon®
- Mounting Options: Pedestal, 56C, 145TC, 182TC and 184TC
- Wide range of drive options

## JABSCO



Stainless S2 Series



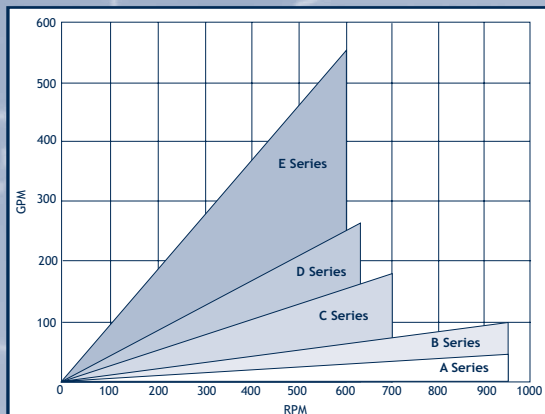
## UP TO 9.2 GPM, 101 PSI

- Temperatures to 302° F
- 316SS construction
- Eight tooth spur gears (standard) or three lobe rotors
- Single mechanical or o-ring seal arrangements
- BSP ports standard, all others optional
- Will pass up to 5mm soft solids
- Timed gears ensure extremely accurate flow

## JABSCO



Stainless 24 Series



## UP TO 554 GPM, 203 PSI

- Temperatures to 392° F
- 316SS construction - true rotary lobe non-contacting
- Viscosities to 1,000,000 CPS
- Port Options: NPT, Tri-clamp, BSP, DIN, SMS, RJT and IDF
- Seal Options: Wide variety of single, double and flush mechanical seals along with multiple o-ring and lip seal options
- Rotor Options: Tri-lobe, bi-lobe and rubber coated