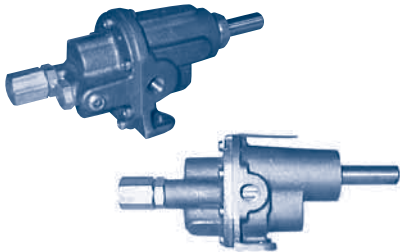


# HELIARC WELDING AND SHOP PUMPS

## OBERDORFER



Foot or Shaft Mount

## HELIARC WELDER COOLANT GEAR PUMPS FOR MILLER, HOBART AND LINCOLN (FOOT/COUPLING MOUNT)

These Oberdorfer bronze internal gear pumps have a relief valve and by-pass line port. They mount by a two bolt foot or via the coupling on the welder's drive shaft.

Model Number	Replacement Number	Mount	Max GPM	Repair Kit
OB 0001146	N1000R-39	Shaft	1.5	OB 11187
OB 0001147	N1000R-39	Shaft	1.5	OB 11187
OB 1000R-39	N1000R-39	Shaft	1.5	OB 11187
OB 1000R-53	N1000R-66	Foot	2.1	OB 11266
OB 1000R-66	N1000R-66	Foot	2.1	OB 11925

CONTENTS

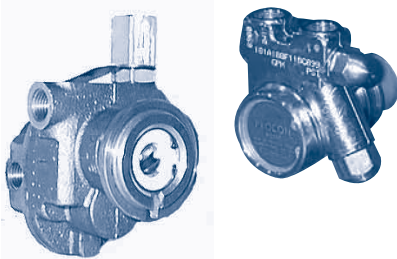
INDEX

NEXT

BACK

HOME

## PROCON / OBERDORFER



Clamp Mount

## HELIARC WELDER COOLANT VANE AND GEAR PUMPS FOR MILLER, HOBART AND LINCOLN (CLAMP MOUNT)

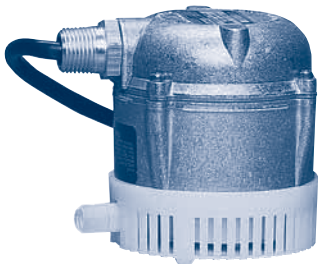
These Procon vane pumps come with an internal by-pass. Models are available with or without a strainer.

Model Number	Strainer	Mount	Max GPM
PC C01304H	Yes	Clamp	1.6
PC C01504H	No	Clamp	1.6

These clamp mount Oberdorfer bronze internal gear pumps have a relief valve and by-pass line port. They mount via a clamp and coupling insert. They have the same mounting dimensions as the Procon pump series.

Model Number	Mount	Max GPM	Repair Kit
OB N95060GE	Shaft	1.5	OB 11936
OB N95060GFCO-1	Clamp	1.5	OB 11936
OB N95060GECO-3	Clamp	1.5	OB 11937

## LITTLE GIANT



Parts Washer

## PARTS WASHER PUMP FOR MINERAL SPIRITS, DEODORIZED KEROSENE AND STODDARD SOLVENT

This submersible parts washer pump is approved for mineral spirits, deodorized kerosene and stoddard solvent. It is supplied with double Viton® seals, Nylon head and aluminum housing. It will handle unheated liquids to 100° F with a flash point of 140° F or greater. Discharge port is 1/4" MPT and will accept a 1/4" ID hose.

Model Number	Volts AC	GPH At Feet Of Head				Max Head
		1'	3'	5'	7'	
LG 1-YS	115	205	188	120	35	7.4'

## FILL-RITE



Gear Oil, Mild Acids and Anti-freeze

## ECONOMICAL DRUM PUMP IN POLYPRO FOR STORAGE TANKS AND DRUMS

The Fill-Rite hand level piston pump is the economical way to transfer engine oils, gear oils, anti-freeze, mild acids, and even paraffin at approximately 11 ounces per stroke. Each pump is constructed of Polypropylene with nitrile seals, telescoping suction pipe, and locking ring for 360 alignment versatility.

Model Number	Flow Per Stroke	Materials Of Construction
FR 20	11 ounces	Polypropylene with Nitrile seals