

CONTENTS

COMPACT STATUARY FOUNTAIN PUMPS

Little Giant's compact and energy efficient statuary and fountain pumps are designed to meet both the performance requirements and space limitations of fountains of all sizes. The specification of the two most popular oil-less sizes are displayed below. Both models are 115 vac and come with a six foot power cord. Other sizes are also available (call for details).

Model Number	GPH at Feet of Head						Max Head	Port Size	Dimensions (H x W x L)
	1'	1.5'	2'	2.5'	3'	3.5'			
LG PES-100-PW	92	84	74	62	48	26	4'	3/8" or 1/2" Barb	3" x 1.6" x 2.3"
LG PES-120-PW	120	108	92	73	50	25	4'	3/8" or 1/2" Barb	3" x 1.6" x 2.3"

LITTLE GIANT



Statuary Fountain

INDEX

NEXT

BACK

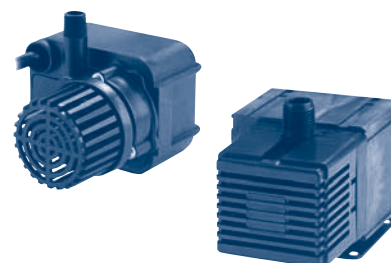
HOME

OIL-LESS FOUNTAIN OR FILTERING PUMPS

Little Giant's environmentally safe, oil-less submersibles are constructed out of corrosion resistant materials and come standard with a 15' power cord. They are designed to run continuously on fountain or filtration applications. Below are several of the more popular 115 vac models in this series. Other sizes are available (call for details).

Model Number	GPH at Feet of Head						Max Head	Port Size	Dimensions (H x W x L)
	1'	2'	3'	5'	7'	10'			
LG PE-1F-PW	170	152	135	100	-	-	7'	1/4" MPT	4" x 4" x 4 1/2"
LG PE-2F-PW	300	275	260	210	145	65	12.2'	1/4" MPT	4" x 4" x 4 1/2"
LG PE-2.5F-PW	470	460	440	390	320	200	13.4'	1/2" MPT	4" x 4" x 4 1/2"
LG PES-300-PW	325	300	270	220	150	5	10.2'	1/2" MPT	3 7/10" x 3 9/10" x 5 3/5"
LG PES-500-PW	500	440	380	260	155	-	9.7'	1/2" MPT	3 7/10" x 3 9/10" x 5 3/5"
LG PES-700-PW	660	620	560	450	360	155	11.5'	1/2" MPT	3 7/10" x 3 9/10" x 5 7/10"

LITTLE GIANT



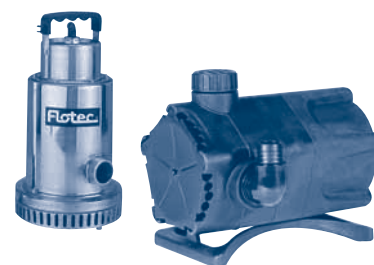
Fountain or Filtering

HIGH VOLUME OIL-LESS FOUNTAIN AND WATER PUMPS

These high quality environmentally safe, oil-less high volume submersibles were designed for continuous duty fountain and waterfall applications. The 115 vac, 1/2 HP Flotec stainless steel FPOS4100X will move up to 4000 GPH and comes with a 15' power cord. The WGP series thermoplastic pumps from Little Giant have a unique dual discharge design that allows for operation of two water features simultaneously. Both WGP models are 115 vac, come with a 16' power cord and 1 1/4" FPT or 1" barbed elbow discharge.

Model Number	GPH at Feet of Head						Max Head	Port Size	Dimensions (H x W x L)
	0'	5'	10'	15'	20'	25'			
FLT FPOS4100X	4100	3600	3000	2400	1650	900	30'	1 1/4" or 1" MPT	4" x 7 1/4" x 7 1/4"
LG WGP-65-PW	1900	1250	785	325	-	-	20'	1 1/4" FPT or 1" Barb	8.1" x 6.35" x 9.6"
LG WGP-95-PW	4280	4000	3500	2850	2200	1000	30'	1 1/4" FPT or 1 1/4" Barb	8.1" x 6.35" x 11"

FLOTEC / LITTLE GIANT



Stainless or Thermoplastic

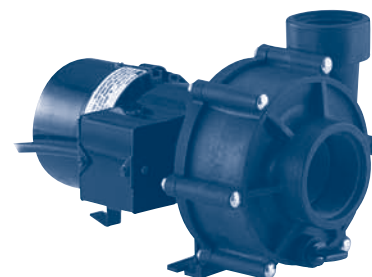
OUT OF POND PUMPS WITH FLOW TO 97 GPM / 5820 GPH

Little Giant's high volume "Out of Pond" pumps have glass-filled Polypropylene housings, glass-filled Noryl impeller and an enclosed motor (for weather resistance). They are used specifically for water gardening with noise generation in mind. Little Giant was able to keep this pump series' noise generating levels equivalent to a small electrical fan of 52 dB.

Note: For above the water level applications, a leaf basket (566106), is required to act as a priming chamber.

Model Number	Inlet Port	Outlet Port	HP	Volts AC	GPH at Feet of Head					Max Head
					0'	5'	10'	15'	20'	
LG OPWG-29	2" FPT	1 1/2" FPT	1/8	115	2220	1740	300	-	-	10.2'
LG OPWG-46	2" FPT	1 1/2" FPT	1/8	115	3300	2760	1500	-	-	12'
LG OPWG-42	1 1/2" FPT	1 1/2" FPT	1/8	115/230	2520	2520	1920	1320	-	20'
LG OPWG-71	1 1/2" FPT	1 1/2" FPT	1/6	115/230	4260	4260	3540	2670	300	21'
LG OPWG-97	1 1/2" FPT	1 1/2" FPT	1/4	115/230	5820	5820	5040	4020	2520	22'

LITTLE GIANT



Out of Pond