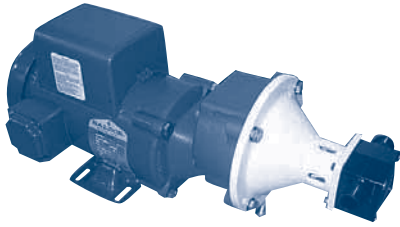


METERING AND DOSING

JABSCO



Stainless, Sanitary and Epoxy

UP TO 100 GPM, UP TO 60 PSI, FLEXIBLE IMPELLER

JabSCO's self-priming flexible impeller pump design can effectively handle thin, viscous, shear sensitive, abrasive, particle-laden and air entrained fluids with ease. They are available in pedestal and C-Face mounting allowing an infinite number of variable speed drive systems to meet harsh or explosive environments, unique voltages and even hydraulic or pneumatic drive installations. Pumps come in 316SS, epoxy and 3A rated sanitary construction with the choice of Neoprene, EPDM, Buna or Viton® impellers. Hardened seals are also available.

Series	Minimum Flow	Maximum Flow	Maximum Pressure
30510/30550	1.0 gpm	10 gpm	60 psi
30520/30560	2.0 gpm	20 gpm	60 psi
30530/30570	5.0 gpm	50 gpm	60 psi
30540/30580	10.0 gpm	100 gpm	60 psi

CONTENTS

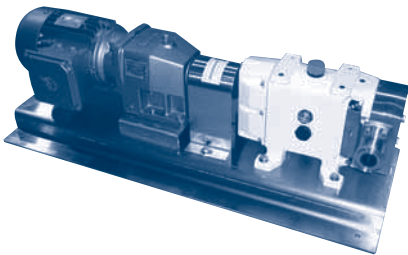
INDEX

NEXT

BACK

HOME

JABSCO



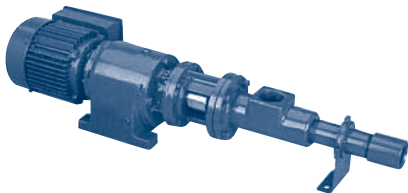
Stainless and Sanitary

UP TO 554 GPM, UP TO 300 PSI, ROTARY LOBE

JabSCO's rotary lobe pump design can effectively handle thin, viscous, shear sensitive, abrasive and particle-laden liquids. They are used extensively in the food, pharmaceutical, cosmetic and chemical process industries. Elastomer options include nitrile, Viton®, EPDM, PTFE and Kalrez. An infinite number of variable speed drive systems are available to meet harsh or explosive environments, unique voltages and even hydraulic or pneumatic drive requirements.

Series	Min. Flow	Max. Flow	Max. Pressure	Design Specifications
55 Series	.42 gpm	17.7 gpm	300 psi	3A and Ultra-Hygienic
Hy-Line	3.2 gpm	180 gpm	215 psi	3A and Gen. Industrial
Ultima	3.2 gpm	180 gpm	215 psi	3A and Ultra-Hygienic
24 Series	1.0 gpm	554 gpm	217 psi	3A and Gen. Industrial

ROBBINS & MYERS / MOYNO



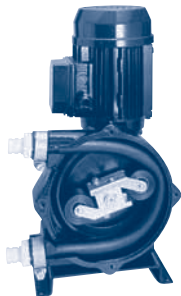
Stainless and Cast Iron

UP TO 190 GPH, UP TO 300 PSI, PROGRESSING CAVITY

The Robbins and Myers progressive cavity metering pumps feature highly accurate, repeatable flow rates for pinpoint flow control. They are designed to handle a wide range of fluids from clean, clear liquids to abrasive, corrosive fluids, solids in suspension and viscous materials. They are used extensively in process applications including chemical dosing, sampling and polymer metering. Pumps are available in 316SS or cast iron housings, nitrile, natural rubber, EPDM or Fluoroelastomer stators and with packing or mechanical seals. A wide variety of drives are available to meet your specific requirements.

Series	Minimum Flow	Maximum Flow	Maximum Pressure
4015 Series	1.5 gph	15 gph	300 psi
4100 Series	10 gph	100 gph	300 psi
4190 Series	19 gph	190 gph	150 psi

VECTOR



Industrial and Sanitary

UP TO 260 GPM, 200 PSI PERISTALTIC

Vector's peristaltic series is self-priming and will handle up to 35% solids and viscosities of up to 100,000 cps. The peristaltic pumping principle's main advantage is its inherently clean design that isolates the liquid being pumped from all pump components except the hose. This also simplifies liquid compatibility issues to the hose material itself. The hose materials available are: Neoprene, Hypalon®, Varprenne, Silicone, Natural Rubber, Nitrile, EPDM and PharMed.

Series	Min. Flow	Max. Flow	Max. Solid	Max. Fiber	Max. Pressure
2002	.005 gpm	.51 gpm	1/16"	1/4"	18 psi
2003	.011 gpm	1.28 gpm	1/16"	1/4"	18 psi
2004	.029 gpm	3.56 gpm	1/16"	1/4"	22 psi
2005	.083 gpm	7.90 gpm	1/8"	1/2"	37 psi
2006	.180 gpm	18.5 gpm	1/8"	1/2"	60 psi
2007	.510 gpm	50 gpm	1/8"	1/2"	60 psi
2010	5 gpm	260 gpm	2 1/2"	36"	116 psi
3005	.11 gpm	11.7 gpm	3/5"	4"	200 psi