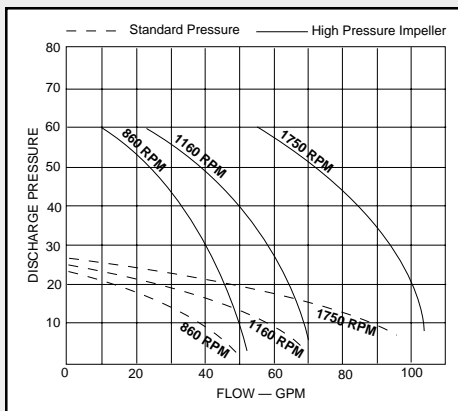




**Up to 100 GPM, 60 PSI**

- Temperatures to 185° F
- Construction: polished sanitary 316SS housing with FDA compliant elastomers
- Mounting Options: AC and DC voltages, TEFC, washdown, explosion proof, gear reduction, variable speed drive and other custom configurations
- See pages 22 and 23 for non-sanitary models



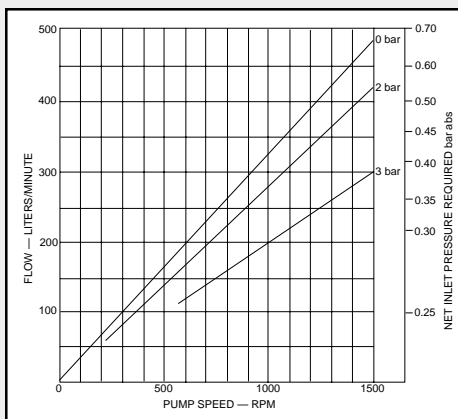
**100 GPM – 30580 SERIES**



**2" Sanitary Clamp or Acme Thread**

**Up to 132 GPM, 43.5 PSI**

- Temperatures to 185° F
- Construction: polished sanitary 316SS housing with FDA compliant elastomers
- Mounting Options: AC and DC voltages, TEFC, washdown, explosion proof, gear reduction, variable speed drive and other custom configurations



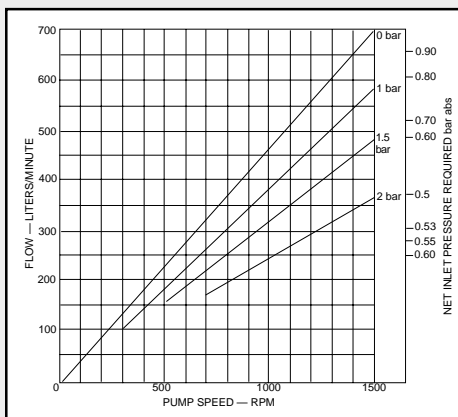
**132 GPM – 500 LITER SERIES**



**2 1/2" Sanitary Clamp or Acme Thread**

**Up to 185 GPM, 29 PSI**

- Temperatures to 185° F
- Construction: polished sanitary 316SS housing with FDA compliant elastomers
- Mounting Options: AC and DC voltages, TEFC, washdown, explosion proof, gear reduction, variable speed drive and other custom configurations



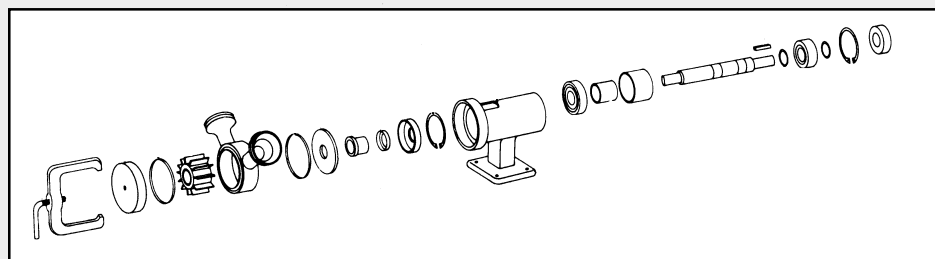
**185 GPM – 700 LITER SERIES**



**2 1/2" Sanitary Clamp or Acme Thread**

**SERVICE PARTS FOR ORIGINAL JABSCO MODELS**

Thousands of these dependable pumps are still operating in the field. Most parts are still available to keep your pump up and running. The 305XX pump series will retrofit most applications. Call us for assistance.



**15010-15070 SERIES**  
(Discontinued Series)



**1 1/2" & 2" Sanitary Clamp or Acme Thread**

**NOTE:** Curves show approximate head and flow for new pumps with neoprene impeller pumping water. Other impeller compounds may reduce performance.

**FOR ENGINEERING AND PUMP SELECTION ASSISTANCE CALL DEPCO AT 1-800-446-1656**