

PEDESTAL TURBINE

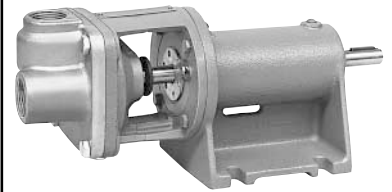


BRONZE FITTED CAST IRON - UP TO 210° F - 150 PSI - OPT. 500° F SEAL - ALL BRONZE AVAILABLE

Cat No.* Pump Only	Capacity in GPM at Total Head in Feet or Pressure Shown																	
	PSI Feet	8.6 20	13.0 30	17.2 40	21.5 50	26.0 60	34.5 80	43.3 100	54.1 125	64.9 150	75.8 175	86.8 200	97.4 225	108.3 250	119.1 275	130.0 300	140.1 325	151.6 350
BU ET5M	GPM	1.9	1.7	1.6	1.5	1.4	1.1	1.0	.80	.60	.40	.30	.20					
	BHP	.10	.10	.10	.10	.10	.10	.10	.11	.13	.15	.17	.20					
Motor Size		← 1/4 H.P. →																
BU ET6M	GPM	2.4	2.3	2.2	2.0	1.9	1.7	1.6	1.4	1.2	1.0	.80	.60	.50	.40	.30		
	BHP	.10	.10	.10	.10	.10	.10	.12	.17	.20	.23	.28	.30	.35	.40	.42		
Motor Size		← 1/4 H.P. →										← 1/3 H.P. →						
BU ET7M	GPM	3.4	3.3	3.1	2.9	2.8	2.5	2.3	2.1	1.8	1.6	1.4	1.2	1.0	.85	.70		
	BHP	.10	.10	.10	.10	.13	.15	.18	.20	.23	.28	.30	.33	.36	.40	.47		
Motor Size		← 1/4 H.P. →										← 1/3 H.P. →			← 1/2 H.P. →			

1725 RPM

BURKS



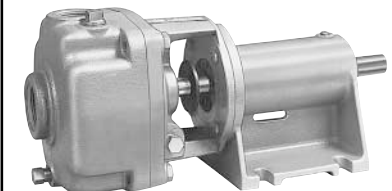
(Non-Priming) ET Series

Available in Stainless

Cat No.* Pump Only	Capacity in GPM at Total Head in Feet or Pressure Shown																	
	PSI Feet	8.6 20	13.0 30	17.2 40	21.5 50	26.0 60	34.5 80	43.3 100	54.1 125	64.9 150	75.8 175	86.8 200	97.4 225	108.3 250	119.1 275	130.0 300	140.1 325	151.6 350
BU ET5M	GPM	4.2	4.1	4.0	3.9	3.8	3.6	3.4	3.2	3.0	2.9	2.8	2.7	2.6	2.6	2.5	2.4	2.4
	BHP	.20	.21	.25	.27	.29	.30	.33	.37	.39	.42	.47	.50	.56	.61	.66	.70	.78
Motor Size		← 1/3 H.P. →										← 1/2 H.P. →			← 3/4 H.P. →			
BU ET6M	GPM	6.0	5.9	5.7	5.5	5.3	5.1	4.8	4.6	4.4	4.3	4.2	4.0	3.9	3.8	3.7	3.7	3.6
	BHP	.28	.28	.285	.29	.30	.32	.38	.41	.48	.51	.57	.60	.65	.70	.72	.81	.88
Motor Size		← 1/3 H.P. →										← 1/2 H.P. →			← 3/4 H.P. →			
BU ET7M	GPM	8.3	8.0	7.8	7.6	7.4	7.1	6.8	6.5	6.2	6.0	5.8	5.5	5.5	5.3	5.2	5.1	5.0
	BHP	.32	.32	.36	.40	.41	.46	.52	.58	.65	.70	.76	.83	.89	.96	1.04	1.13	1.2
Motor Size		← 1/3 H.P. →										← 1/2 H.P. →			← 1 H.P. →			

3450 RPM

BURKS



(Self-Priming) ES Series

Available in Stainless

Cat No.* Pump Only	Capacity in GPM at Total Head in Feet or Pressure Shown																
	PSI Feet	8.6 20	17.2 40	26.0 60	43.3 100	54.1 125	64.9 150	75.8 175	86.6 200	97.4 225	108.3 250	119.1 275	130.0 300	140.1 325	151.6 350		
BU ES5M	GPM	5.6	4.9	4.2	3.2	2.8	2.4	2.1	1.8	1.6	1.4	1.2	1.0				
	BHP	.1	.12	.15	.22	.28	.35	.41	.48	.52	.59	.65	.69				
BU ES6M	GPM	7.7	6.9	6.2	5.0	4.4	3.9	3.6	3.2	2.9	2.6	2.4	2.1				
	BHP	.15	.20	.25	.35	.42	.48	.52	.58	.62	.65	.70	.78				
BU ES7M	GPM	10.5	9.4	8.6	7.2	6.5	5.9	5.4	4.8	4.4	4.0	3.5	3.1	2.7	2.3		
	BHP	.20	.28	.32	.48	.55	.64	.75	.85	.92	1.10	1.20	1.35	1.50	1.70		
BU ES8M	GPM	12.1	11.2	10.3	8.9	8.2	7.5	6.8	6.2	5.6	5.0	4.5	4.0	3.5	3.1		
	BHP	.35	.42	.5	.65	.75	.85	.95	1.10	1.2	1.35	1.5	1.6	1.75	1.95		
BU ES9M	GPM	14.5	13.1	12.1	10.4	9.6	8.8	8.2	7.5	6.9	6.3	5.7	5.2	4.8	4.2		
	BHP	.452	.61	.80	.9	1.05	1.15	1.3	1.42	1.60	1.75	1.90	2.10	2.35			

1725 RPM

Cat No.* Pump Only	Capacity in GPM at Total Head in Feet or Pressure Shown																
	PSI Feet	8.6 20	17.2 40	26.0 60	43.3 100	54.1 125	64.9 150	75.8 175	86.6 200	97.4 225	108.3 250	119.1 275	130.0 300	140.1 325	151.6 350		
BU ES5M	GPM	10.8	10.4	10.0	9.2	8.8	8.6	8.3	8.0	7.8	7.6	7.4	7.2	7.1	7.0		
	BHP	.6	.65	.7	.8	.91	.98	1.1	1.2	1.3	1.4	1.52	1.75	1.85	2.0		
BU ES6M	GPM	15.6	15.2	14.6	13.5	12.9	12.4	11.9	11.6	11.2	10.8	10.4	10.1	9.8	9.5		
	BHP	.85	.9	1.0	1.2	1.35	1.45	1.6	1.7	1.85	1.95	2.1	2.2	2.3	.25		
BU ES7M	GPM	20.0	19.6	9.7	17.3	16.6	15.9	15.3	14.8	14.3	13.8	13.3	12.8	12.5	12.1		
	BHP	1.30	1.38	1.55	1.80	1.95	2.12	2.28	2.45	2.6	2.8	2.95	3.15	3.25	3.5		
BU ES8M	GPM	26.2	25.6	24.5	22.9	22.0	21.2	20.5	19.8	19.2	18.5	18.0	17.4	16.9	16.4		
	BHP	1.6	1.7	1.8	2.2	2.4	2.6	2.8	3.0	3.3	3.6	3.8	4.1	4.4	4.9		
BU ES9M	GPM	32.0	31.5	30.5	28.6	27.5	26.5	25.6	24.7	23.9	23.0	22.2	21.5	20.7	20.0		
	BHP	2.0	2.1	2.3	2.7	3.0	3.2	3.5	3.7	3.9	4.2	4.4	4.6	4.9	5.1		

3450 RPM

BURKS



(Self-Priming) EC & ED Series

Ratings shown are based on tests with 7 foot suction lift pumping clear water at normal temperatures.

Cat No.* Pump Only	Capacity in GPM at Total Head in Feet or Pressure Shown																
	PSI Feet	8.6 20	17.2 40	26.0 60	43.3 100	54.1 125	64.9 150	75.8 175	86.6 200	97.4 225	108.3 250	119.1 275	130.0 300	140.1 325	151.6 350		
BU EC4M	GPM	8.3	7.8	7.3	6.5	6.0	5.6	5.3	4.9	4.6	4.3	4.1	3.9	3.7	3.6		
	BHP	.33	.40	.47	.59	.65	.72	.79	.85	.92	.98	1.1	1.1	1.1	1.2	1.2	
BU EC5M	GPM	10.6	10.1	9.7	9.0	8.5	8.0	87.6	7.2	6.8	6.5	6.2	6.0	5.8	5.6		
	BHP	.40	.49	.56	.71	.80	.88	.96	1.0	1.1	1.2	1.4	1.5	1.6	1.7		
BU EC6M	GPM	15.2	14.5	13.9	12.9	12.2	11.7	11.1	10.6	10.1	9.7	9.2	8.7	8.3	7.8		
	BHP	.48	.52	.60	.78	.86	1.0	1.1	1.2	1.4	1.5	1.7	1.8	1.9	2.1		
BU EC7M	GPM	20.9	19.9	19.1	17.7	16.8	16.0	15.3	14.5	13.8	13.1	12.4	11.8	11.2	10.7		
	BHP	.65	.75	.85	1.1	1.2	1.4	1.6	1.7	1.9	2.1	2.2	2.4	2.6	2.7		
BU EC8M	GPM	29.2	27.7	26.3	24.0	22.5	21.3	20.0	18.8	17.7	16.5	15.3	14.3	13.2	12.2		
	BHP	.73	.86	1.0	1.4	1.6	1.9	2.1	2.4	2.6	2.9	3.2	3.4	3.7	4.0		
BU EC9M	GPM	35.3	33.1	31.3	28.3	26.5	25.0	23.5	22.1	20.7	19.4	18.0	16.7	15.5	14.3		
	BHP	1.0	1.2	1.4	1.9	2.2	2.5	2.7	3.0	3.3	3.6	3.9	4.2	4.6	4.9		
BU EC10M	GPM	35.8	33.9	32.0	29.1	27.5	26.1	24.8	23.6	22.5	21.4	20.3	19.5	18.7	17.7		
	BHP	1.6	1.7	1.8	2.1	2.3	2.5	2.7	2.8	3.1	3.3	3.6	3.8	4.1	4.3		
BU ED8M	GPM	43.9	41.0	38.7	34.9	32.9	31.0	29.4	27.7	26.1	24.6	23.2	21.8	20.5	19.3		
	BHP	1.8	1.9	2.1	2.4	2.7	3.0	3.3	3.7	4.0	4.3	4.9	4.6	5.2	5.5		
BU ED9M	GPM	52.5	48.6	46.2	43.0	41.2	39.4	37.5	36.7	34.0	32.1	30.2	28.5	26.7	24.8		
	BHP	2.0	2.3	2.5	2.9	3.2	3.6	3.9	4.3	4.6	5.0	5.3	5.7	6.1	6.4		
BU ED10M	GPM	61.0	57.3	54.5	50.0	47.8	45.9	44.1	42.3	40.5	38.8	37.0	35.2	33.4	31.5		
	BHP	2.7	3.0	3.3	4.0	4.5	4.9	5.2	5.7	6.0	6.4	6.9	7.3	7.8	8.4		
BU ED11M	GPM	73.2	69.4	66.0	61.0	58.6	56.4	54.1	52.2	50.3	48.5	46.7	45.0	43.4	41.7		
	BHP	2.5	2.8	3.3	4.1	4.5	5.0	5.6	6.0	6.5	7.0	7.3	7.8	8.3	8.7		
BU ED12M	GPM	91.0	85.8	81.5	75.0	71.3	68.0	65.0	62.0	59.2	56.3	53.5	51.0	48.5	46.0		
	BHP	4.1	4.4	4.8	5.8	6.4	7.1	7.7	8.3	9.0	9.6	10.3	11.0	11.7	12.3		
BU ES9M	GPM	91.0	85.8	81.5	75.0	71.3	68.0	65.0	62.0	59.2	56.3	53.5	51.0	48.5	46.0		
	BHP	4.1	4.4	4.8	5.8	6.4	7.1	7.7	8.3	9.0	9.6	10.3	11.0	11.7	12.3		

1725 RPM

FOR ENGINEERING AND PUMP SELECTION ASSISTANCE CALL DEPCO AT 1-800-446-1656