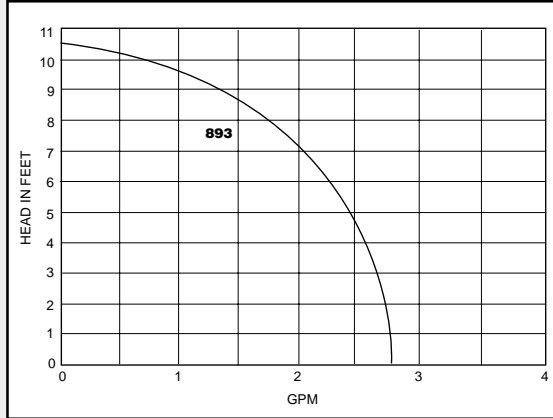


MARCH



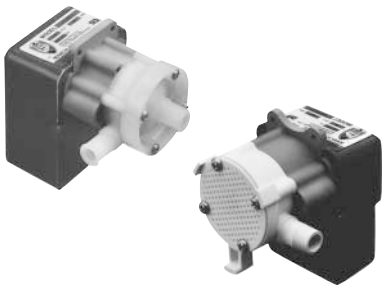
893 Series



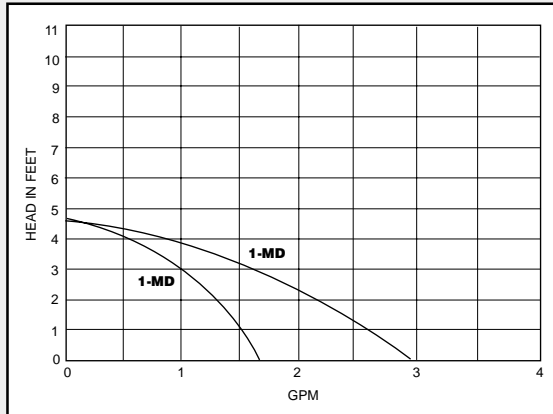
UP TO 2.7 GPM, 10.5 TDH

- Temperatures to 190° F for open motor, 160° F sub.
- Open impeller
- Ports: 3/8" FPT X 1/4" OD
- Construction: Noryl
- Materials in contact with solution: Noryl, Nylon, Buna, 316SS, Ceramic Magnet, Chemloy. (Sub. Epoxy motor)
- Common models: (12 or 24 vdc)
893-03 & 05: open motor
893-04 & 06: submersible
893-07 & 08: open, brushless
893-09 & 10: submersible brushless

MARCH



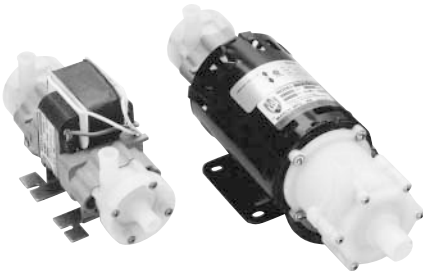
1A/1C/1U-MD Series



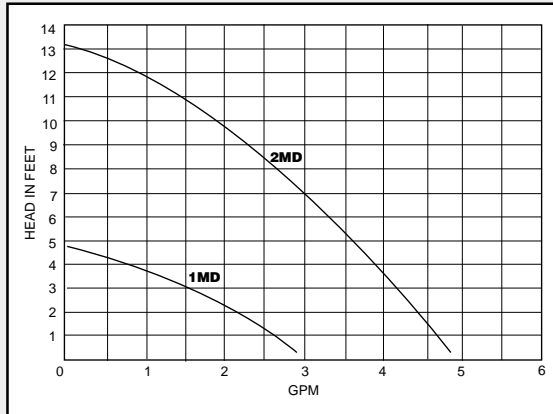
UP TO 3.0 GPM, 4.6 TDH

- Temperatures to 190° F for open motor, 160° F sub.
- Open impeller
- Construction: Polypro
- Materials in contact with solution: Polypro, Nylon, Buna, 316SS Ceramic Magnet, Chemloy. (Sub Epoxy motor and SJT cord)
- Common models: (115 or 230 vac)
1A-MD: 3/8" or 1/2" Barbs
1C-MD: TE/Sub., 1/4" MPT
1U-MD: Sub., 1/4" MPT (screened inlet)

MARCH



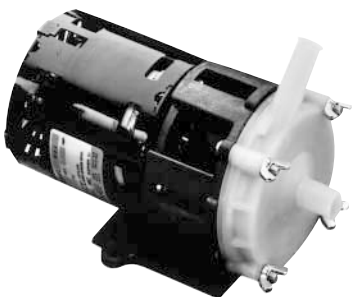
1MD & 2MD Double Headed



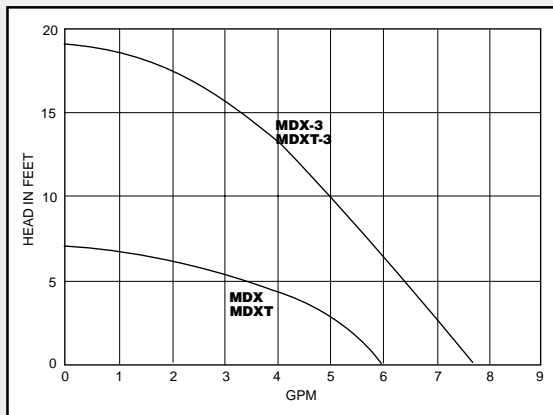
UP TO 5 GPM (PER HEAD), 13 TDH

- Temperatures to 190° F
- Open impeller
- Construction: Polypro
- Materials in contact with solution: Polypro, Viton, Ceramic (Stainless Steel in 1MD only)
- Curves reflect the flow per pump head

MARCH



MDX Series



UP TO 7.6 GPM, 19 TDH

- Temperatures to 190° F
- Open impeller
- Ports: 3/8" FPT X 1/4" OD
- Construction: GF Polypro
- Materials in contact with solution: GF Polypro, Kynar, Ryton, Buna, Ceramic Magnet
- Common models: (115 or 230 vac, with open motors)
MDX: 1/2" or 5/8" Barbs
MDXT: 1/2" x 3/8" FPT ports
MDXT-3: 1/2" x 3/8" FPT ports
MDX-3: 1/2" or 5/8" Barbs