

Both the vane and roller pump styles offer limited self-priming capabilities and will deliver low to medium volumes of liquid at moderate pressures. Vane pumps work well for clean, thin, lubricating liquids. Roller pumps can handle particles in suspension and are popular for agricultural spraying of fertilizer and insecticides, filtering dirty oil, and hydrostatic testing. (See pages 114-115 for hand operated vane pumps)

REVERSIBLE VANE



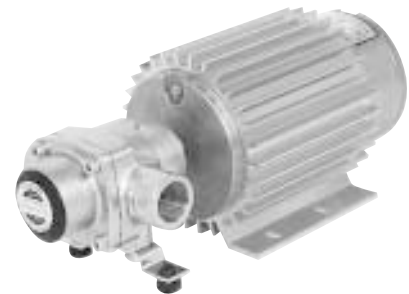
12 and 24vdc vane pump with a reversing switch. They will lift oil, diesel or water 6 feet! Some models even have an internal by-pass. Mount it on a drum to empty and fill liquid. (See page 49)

PROCON "CARBONATOR" MOUNT



There are millions of these Procon vane pumps dispensing beverages, cooling welders, and purifying water. Do you have one? (See page 134)

12VDC – 100 PSI



This 12vdc roller pump assembly will handle a wide range of fertilizers, insecticides and corrosive liquids in spraying and transfer applications. Up to 9 gpm and 100 psi. (See page 51 for details)

NSF – HOT FAT PUMP



The NSF rated roller pump is designed to feed hot cooking oil (up to 400° F) through a filter for recycling. Do you have any hot, dirty oil? (See pages 51 and 104)

PTO / ENGINE / ELECTRIC



Pesticide, insecticide, fertilizer, hydrostatic testing... do you know any place else to use a roller pump? We can mount them on an engine, electric motor, or even a PTO. (See pages 50-51)

GAS / DIESEL PUMP



AC and low voltage DC vane pumps in explosion proof (OK FOR GAS!). They self-prime, mount on a bung adapter and are economical. Manually operated versions are also available. (See page 115)

FOR ENGINEERING AND PUMP SELECTION ASSISTANCE CALL DEPCO AT 1-800-446-1656