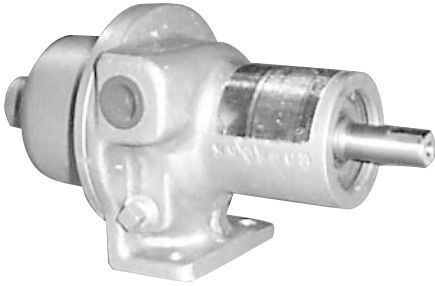
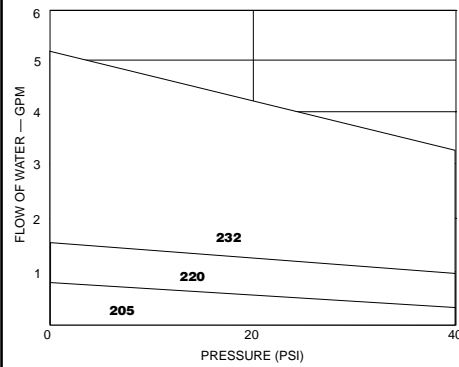


ROBBINS & MYERS



Pedestal or Close-coupled

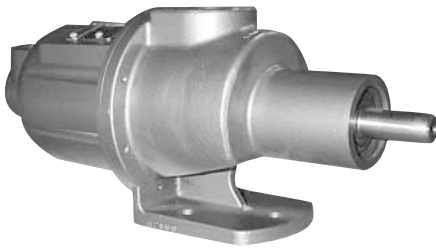
200 Series



UP TO 5 GPM, 40 PSI

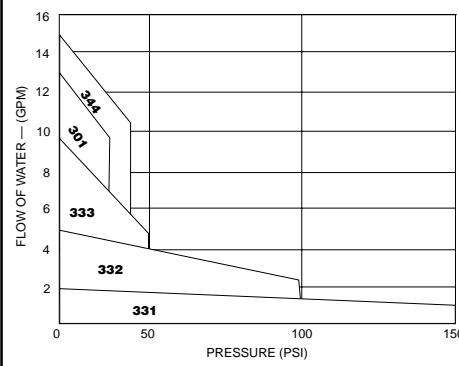
- Temperatures to 240° F
- Self-priming to 25 ft. (when wet)
- Pedestal Configuration: aluminum or 316SS housing
- Close-coupled configuration: Phenolic plastic housing
- Elastomer Options: Nitrile, EPDM and FPM

ROBBINS & MYERS



Pedestal or Close-coupled

300 Series



UP TO 15 GPM, 150 PSI

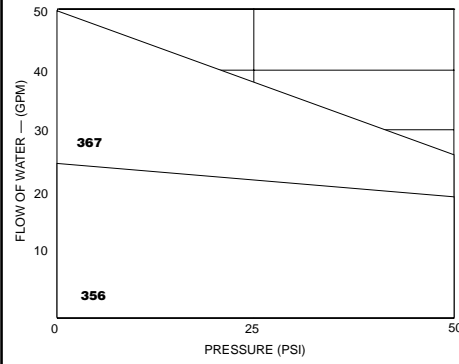
- 25 PSI Phenolic series
- Temperatures to 210° F (160° F Phenolic series)
- Self-priming to 25 ft. (when wet)
- Housing Construction: Cast Iron, 316SS or Phenolic plastic
- Elastomer Options: Nitrile, EPDM and FPM

ROBBINS & MYERS



Pedestal or Close-coupled

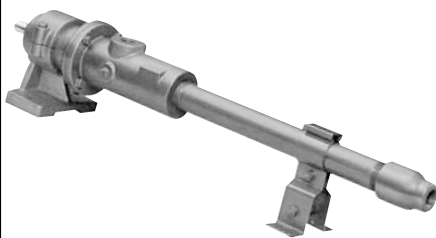
356/367 Series



UP TO 50 GPM, 50 PSI

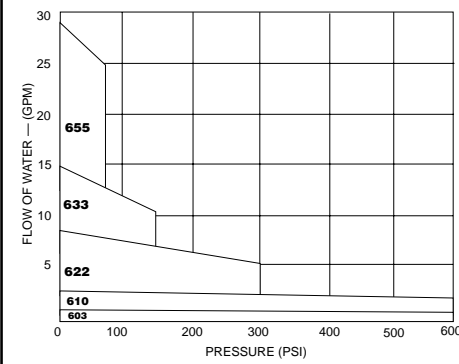
- Temperatures to 240° F
- Packing or mechanical seals
- Self-priming to 25 ft. (when wet)
- Housing Construction: Cast Iron, 316SS
- Elastomer Options: Nitrile, EPDM and FPM

ROBBINS & MYERS



Pedestal Configuration

600 Series



UP TO 30 GPM, 600 PSI

- Temperatures to 210° F
- Packing or mechanical seals
- Self-priming lifts when wet to: 25 ft. for packing gland series, 15 ft. for mechanical seal series
- Construction: Cast Iron
- Elastomer Options: Nitrile and EPDM

FOR ENGINEERING AND PUMP SELECTION ASSISTANCE CALL DEPCO AT 1-800-446-1656