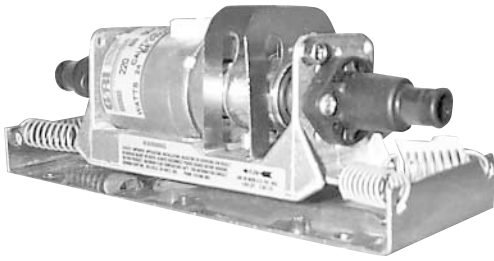


GRI



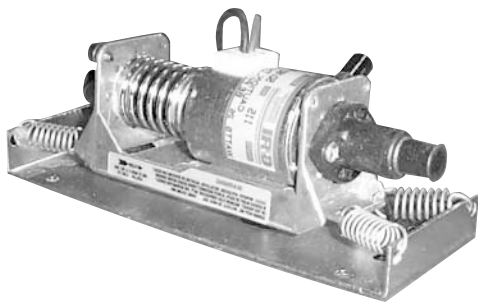
14825 Series

**UP TO .6 GPM, 8.3 TDH
SELF-PRIMING & FDA COMPLIANT**

Oscillating pumps are compact, lightweight, economical, lift up to 48", handle temperatures to 104° F and can run dry continuously. The "Leaf Spring" style typically runs quieter than the "Coil Spring" style shown below. The FDA compliant materials of EPT/EPDM and glass reinforced polypropylene are the only materials in contact with the liquid. Other elastomers are available.

Model Number	Volts AC	Elastomers Impeller/Valve	Max Flow	Max Head	Valve Type	Port Size	Mounting Type
GRI 14825-600	115	Viton	.19	100"	Poppet	1/8 x 1/4"	Spring w/bracket
GRI 14825-601	115	EPT/EPDM	.58	100"	Poppet	1/2" OD	Spring w/bracket
GRI 14825-603	115	Hydrin	.59	100"	Poppet	1/2" OD	Spring w/bracket
GRI 14825-622	220	EPT/EPDM	.64	100"	Poppet	1/2" OD	Rubber feet
GRI 14825-556	220	EPT/EPDM	.64	100"	Dbl. Poppet	1/2" OD	Rubber feet
GRI 14825-595	220	EPT/EPDM	.66	100"	Dbl. Poppet	1/2" OD	Rubber feet

GRI



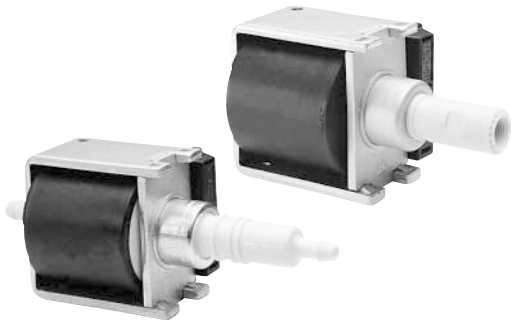
15000/17000 Series

**UP TO 1.25 GPM, 8.3 TDH
SELF-PRIMING & FDA COMPLIANT**

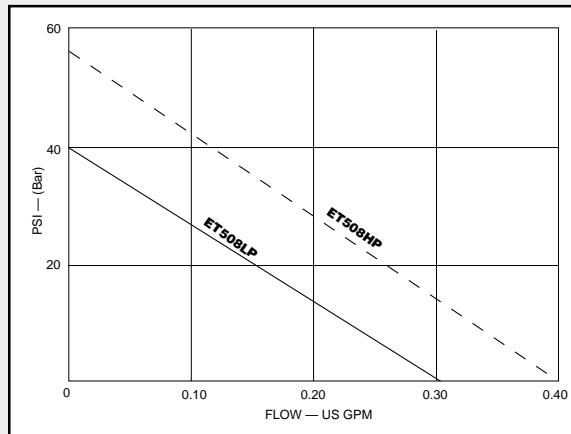
Oscillating pumps are compact, lightweight, economical, and can run continuously. The "Coil Spring" style oscillating pump moves up to twice the flow of the "Leaf Spring" series shown above. FDA compliant materials are also used in this series for all liquid contact locations. The maximum temperature allowable is 104°F and the maximum suction lift possible is 48".

Model Number	Volts AC	Elastomers Impeller/Valve	Max Flow	Max Head	Valve Type	Port Size	Mounting Type
GRI 15000-078	115	EPT/EPDM	.69	100"	Poppet	1/2" OD	Spring w/bracket
GRI 15000-079	220	EPT/EPDM	.64	100"	Poppet	1/2" OD	Spring w/bracket
GRI 15000-303	220	EPT/EPDM	.40	100"	Dbl. Poppet	1/2" OD	Rubber feet
GRI 17000-001	115	EPT/EPDM	.80	100"	Poppet	1/2" OD	Spring w/bracket
GRI 17000-174	115	EPT/EPDM	.80	100"	Poppet	1/4" OD	Spring w/bracket
GRI 17000-101	220	EPT/EPDM	.72	100"	Duckbill	1/2" OD	Spring w/bracket
GRI 17000-172	220	EPT/EPDM	.72	100"	Duckbill	1/2" OD	Base

FLOJET



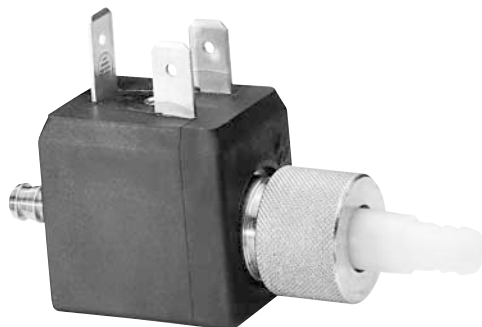
ET 500 Series



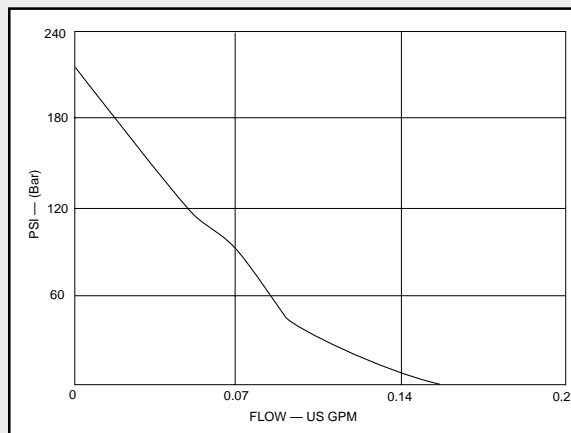
**UP TO .40 GPM,
55 PSI**

- Up to 160°F
- EPDM, Viton or Buna elastomers
- Stainless Steel piston & spring
- 115 vac or 230 vac

FLOJET



ET 200 Series



**UP TO .18 GPM,
230 PSI**

- Up to 160°F
- EPDM, Viton or Buna elastomers
- Stainless Steel piston & spring
- 115 vac or 230 vac

FOR ENGINEERING AND PUMP SELECTION ASSISTANCE CALL DEPCO AT 1-800-446-1656