

HYDRAULIC DRIVE LOBE PUMPS 1 1/2" TO 4" PORTS, UP TO 263 GPM

Jabsco Lobe pumps (see pages 95-97 for more detailed pump specifications) are available in hydraulic drive and are widely used on road tankers for loading and unloading viscous products and the collection of milk from farms. The hydraulic drive allows one pump to handle a variety of liquid viscosities by varying pump speed through adjusting hydraulic fluid flow. These pumps have an optional relief valve that protects against damage from a closed valve or blocked hose. They are also easy to clean and service.

24 SERIES



1 1/2", 2", 3", & 4" Ports

- 316 Hygienic Stainless Steel
- Reversible
- CIP Capability
- Smooth, Gentle Pumping Action
- Easy-Service Features
- Bolt-on Ports, External Timing Gears
- Optional Relief Valve
- PTO & Electric Drive Versions Available

HY-LINE SERIES



1 1/2", 2", 3", & 4" Ports

FLANGE MOUNT FLEXIBLE IMPELLER PUMPS 2" & 2 1/2" PORTS, UP TO 185 GPM

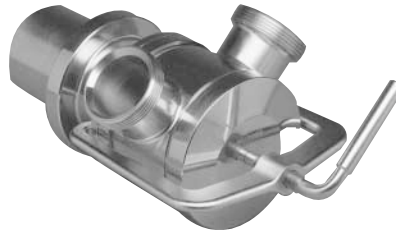
These Jabsco pumps are specially designed for use as product pick-up pumps mounted on over the road fluid transport "Tankers". Offered in three sizes, this pump range provides an effective pump for the smaller truck mounted 2200 U.S. gallon tanks as well as a pump for the largest 6000 U.S. gallon trailer mounted tank. Although designed to conform to the 3A equipment standards for use in transferring milk, these pumps can handle a wide range of fluids. Electrically driven versions available.

15170-0005 SERIES



2" Acme Threaded Ports

22060-5105 SERIES

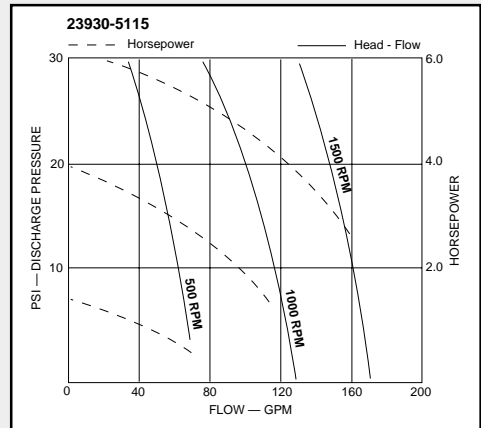
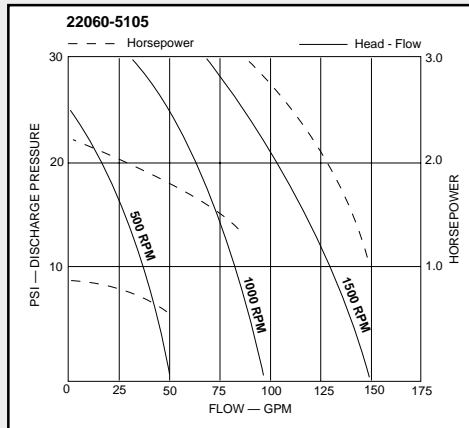
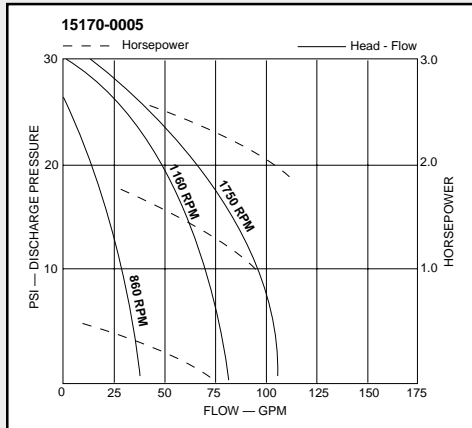


2 1/2" Acme Threaded Ports

23930-5115 SERIES



2 1/2" Acme Threaded Ports



FOR ENGINEERING AND PUMP SELECTION ASSISTANCE CALL DEPCO AT 1-800-446-1656