

The Oberdorfer Chemsteel gear pump series comes in C-Face or pedestal mounting to accommodate your required application whether it is variable speed metering, explosion proof transfer, TEFC industrial process, or hydraulically driven pressure spray. Pumps come in a variety of constructions including 316 Stainless Steel, Hastelloy, and Ryton. Custom tandem pump assemblies are also available.

OBERDORFER



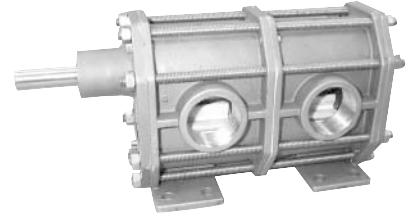
C-Face Mounting

OBERDORFER



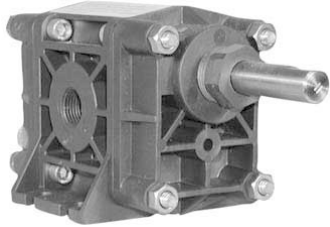
Pedestal/Base Mounting

OBERDORFER

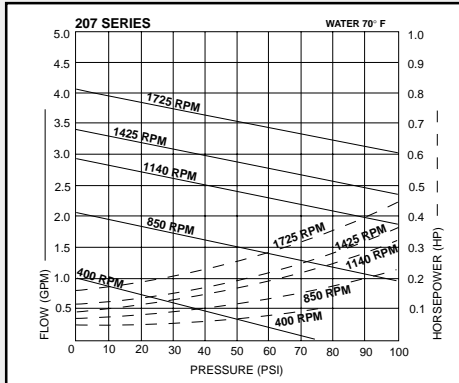


Custom Tandem Pumps

OBERDORFER

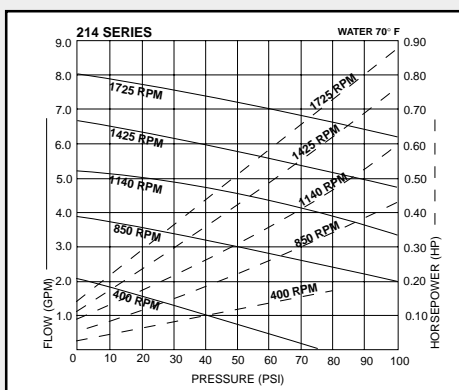
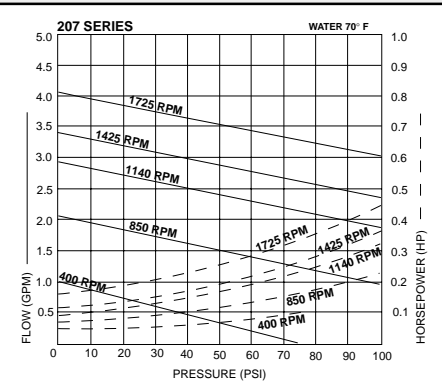


Ryton Series (3/8", 1/2" & 3/4" Ports)



UP TO 2.8 GPM, 75 PSI (100 PSI Intermittent)

- Temperatures to 180° F
- Ryton housing and gears
- Seal Options: Teflon, Viton, EPDM, or packing of Teflon or Grafoil
- Bearing Options: Carbon or Teflon
- Wetted Metal Options: 316 Stainless or Hastelloy C



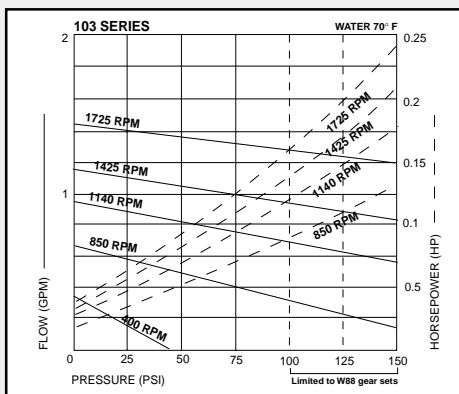
UP TO 8.0 GPM, 75 PSI (100 PSI Intermittent)

- 50 psi max. continuous duty for 214 Series
- Temperatures to 180° F
- Ryton housing and gears
- Seal Options: Teflon, Viton, EPDM, or packing of Teflon or Grafoil
- Bearing Options: Carbon or Teflon
- Wetted Metal Options: 316 Stainless or Hastelloy C

OBERDORFER



103XXX Series (3/8" Ports)



UP TO 1.5 GPM, 100 PSI (150 PSI Intermittent)

- Temperature to 400° F
- Housing Options: 316 Stainless or Hastelloy C
- Seal Options: Teflon, Viton, EPDM, or packing of Teflon or Grafoil
- Bearing Options: Carbon or Teflon
- Gear Options: Teflon, Hastelloy C, Ryton, 316 Stainless, W88

FOR ENGINEERING AND PUMP SELECTION ASSISTANCE CALL DEPCO AT 1-800-446-1656