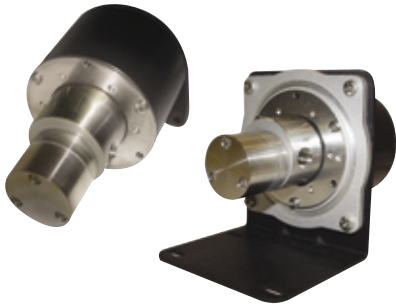


METERING AND DOSING GEAR PUMPS

MICROPUMP



I-Drive

UP TO 78 GPH, 80 PSI

The Micropump I-Drive incorporates an innovative brushless DC motor that has no moving parts for simplicity and reliability. These drives can be matched up with Micropump's GJ or GA pump heads to deliver smooth, pulseless flow. They can be adjusted manually or by a 0-5 vdc or 4-20 MA control signal. The pump heads are available in 316SS, Hastelloy® B or C, A-20 or Titanium.

Series Number	Minimum Flow	Maximum Flow	Maximum Pressure
GJ (120) Series	2.5 GPH	78 GPH	80 PSI
GA (180) Series	.16 GPH	7.75 GPH	75 PSI

MICROPUMP (C-Face)



Stainless, Hastelloy® and Alloy 20

8 - 43,000 ML/MIN (11.4 GPM), 125 PSI, MAGNETIC DRIVE

Micropump manufactures a wide range of magnetic drive gear pumps utilizing the versatile C-Face design. This allows a variety of accurate variable speed drive systems to be utilized to create a pulseless, accurate and sealless metering or batching pump for low viscosity liquids up to 11.4 gpm. Micropump gear pumps are available in 316SS, Hastelloy® and Alloy 20 construction, can deliver pressures of up to 125 psi and come in an infinite number of configurations to meet your specific voltage, enclosure, turndown and control requirements.

Series Number	Minimum Flow	Maximum Flow	Maximum Pressure
120/180 Series	8.5 ml/min	3,200 ml/min (.9 gpm)	80 psi
114/200 Series	48.5 ml/min	10,900 ml/min (2.9 gpm)	125 psi
220/2200 Series	1,210 ml/min	12,100 ml/min (3.2 gpm)	100 psi
5000/5500 Series	1,662 ml/min	26,800 ml/min (7.0 gpm)	125 psi
10K Series	4,300 ml/min	43,000 ml/min (11.4 gpm)	100 psi

OBERDORFER



Stainless, Hastelloy® and Ryton®

.01 - 30 GPM, 150 PSI, PACKING OR MECHANICAL SEAL, OR MAGNETIC DRIVE

Oberdorfer manufactures a versatile series of chemical grade gear pumps that deliver a pulseless and accurate flow of thin to viscous, clean liquids. They are available in pedestal and C-Face mounting allowing an infinite number of variable speed drive systems to meet harsh or explosive environments, unique voltages, and even hydraulic or pneumatic drive installations. They are available in 316SS, Hastelloy® and Ryton® (up to 8 gpm, 75 psi) construction with Teflon® packing or Teflon®, Viton® or EPDM mechanical seals. Magnetic coupling (sealless) versions also available.

Series Number	Minimum Flow	Maximum Flow	Maximum Pressure
R1XXX Series	.01 gpm	2.5 gpm	110 psi
S2XXX Series	.40 gpm	8.0 gpm	150 psi
S417X Series	1.0 gpm	10.0 gpm	150 psi
S9XXX Series	3.8 gpm	30.0 gpm	150 psi

OBERDORFER



Bronze Custom Assembly

.09 - 40 GPM, 100 PSI, WITH MULTIPLE SEAL OPTIONS

Oberdorfer manufactures an economical series of bronze gear pumps that delivers smooth pulseless flow of thin to viscous, clean liquids. They are available in pedestal and C-Face mounting allowing an infinite number of drive systems. Pumps come with stainless steel shafts and have the choice of lip seals, packing or mechanical seals.

Series Number	Minimum Flow	Maximum Flow	Maximum Pressure
N999 Series	.09 gpm	.9 gpm	100 psi
N991, N1000 Series	.20 gpm	2.0 gpm	100 psi
N992, N2000 Series	.40 gpm	4.0 gpm	100 psi
N993, N3000 Series	.70 gpm	7.0 gpm	100 psi
N994, N4000 Series	1.0 gpm	10.5 gpm	100 psi
N970, N7000 Series	2.0 gpm	19.8 gpm	100 psi
N990, N9000 Series	2.3 gpm	23.0 gpm	100 psi
N1100, N11HD Series	4.0 gpm	40.0 gpm	100 psi