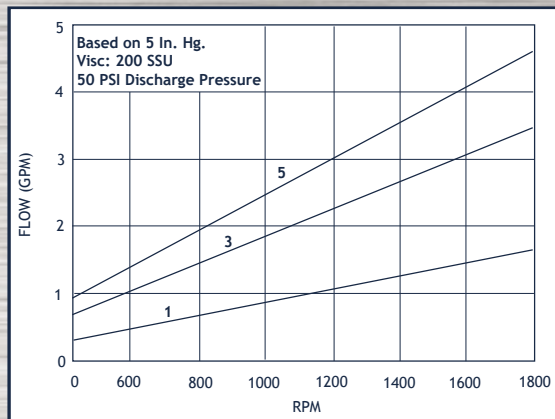


DUCTILE IRON GEAR PUMPS

UP TO 5 GPM, 250 PSI

- Temperatures to 650° F
- Lubricating or non-lubricating liquids
- High viscosities handled at direct drive motor speeds (up to 10,000 SSU)
- Ductile iron body, several rotor and bushing material choices
- Lip seal, mechanical seal or packing
- Close coupled or foot mounting options



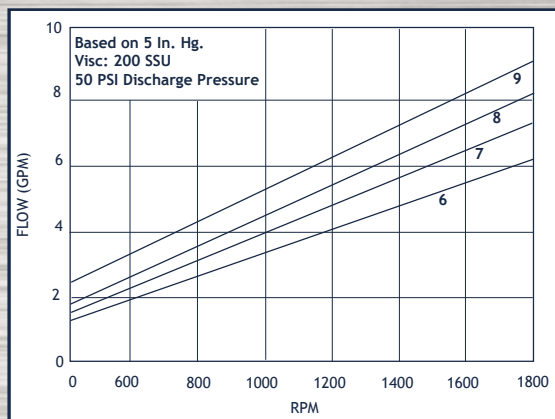
HAIGHT



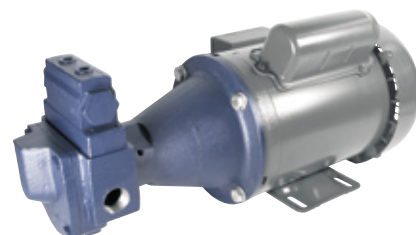
U Series - (Hub Mount Shown)

UP TO 9 GPM, 250 PSI

- Temperatures to 650° F
- Lubricating or non-lubricating liquids
- High viscosities handled at direct drive motor speeds (up to 10,000 SSU)
- Ductile iron body, several rotor and bushing material choices
- Lip seal, mechanical seal or packing
- Close coupled or foot mounting options



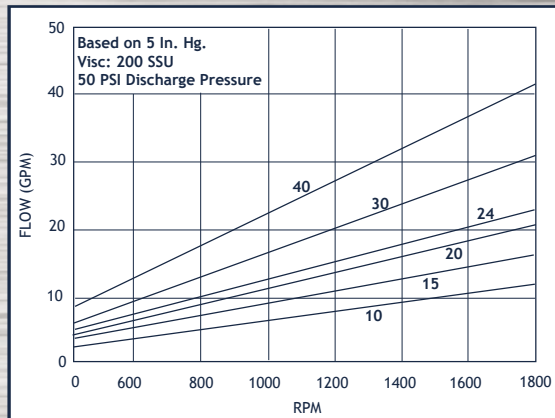
HAIGHT



U Series - (C-Face Mount Shown)

UP TO 40 GPM, 250 PSI

- Temperatures to 650° F
- Lubricating or non-lubricating liquids
- High viscosities handled at direct drive motor speeds (up to 10,000 SSU)
- 316SS available on 10, 15 and 20
- Ductile iron body, several rotor and bushing material choices
- Lip seal, mech. seal or packing
- Close coupled or foot mounting options



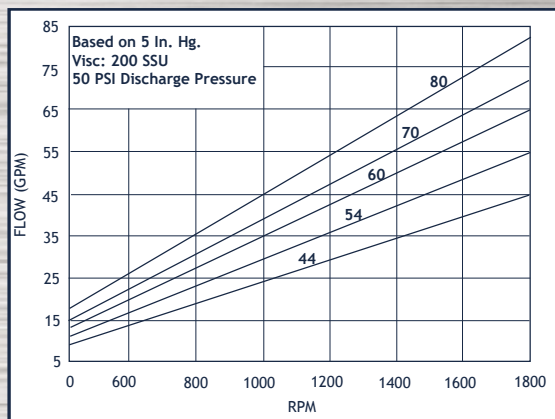
HAIGHT



U Series - Square Flange

UP TO 80 GPM, 250 PSI

- Temperatures to 650° F
- Lubricating or non-lubricating liquids
- High viscosities handled at direct drive motor speeds (up to 10,000 SSU)
- Ductile iron body, several rotor and bushing material choices
- Lip seal, mechanical seal or packing
- Close coupled or foot mounting options



HAIGHT



D Series - Double Pumps