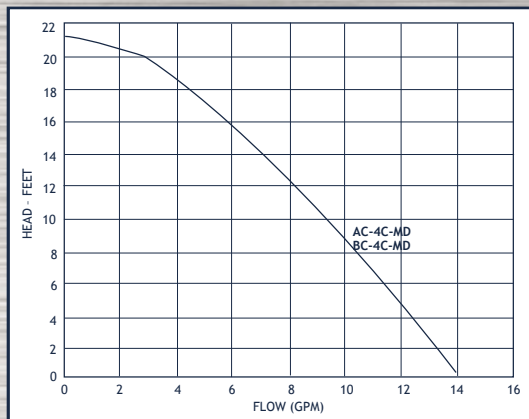


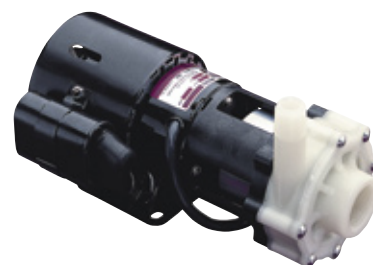
MAGNETIC DRIVE CENTRIFUGALS

UP TO 14 GPM, 21.5' TDH

- Temperatures to 190 °F
- Open impeller
- Construction: Polypro or Kynar
- Materials in contact with solution: AC (Polypro, ceramic magnet, ceramic and Buna), BC (Polypro or Kynar, ceramic and Viton®)
- Common models: (115 or 230 vac with 1" FPT x 1/2" MPT)
AC-4C-MD: Polypro, open motor
BC-4C-MD: Polypro, TE motor
BC-4K-MD: Kynar, TE motor



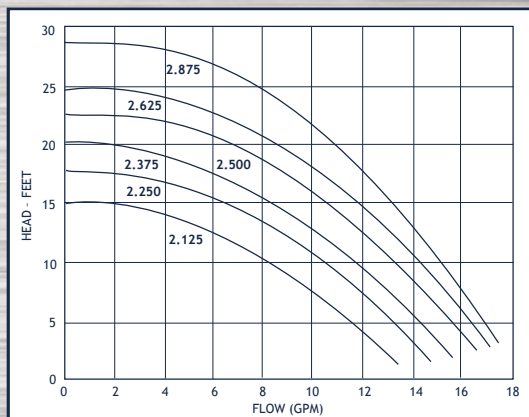
MARCH



4C-MD Series

UP TO 18 GPM, 29' TDH

- Temperatures to 250 °F
- Open impeller
- Construction: Polypro, Kynar or 316SS
- Materials in contact with solution: housing material, ceramic, Buna or Viton® (5S has carbon bushing)
- Common models: (115 or 230 vac with 1" FPT x 1/2" MPT)
AC-5C-MD: Polypro, open motor
TE-5C-MD: Polypro, TEFC motor
TE-5K-MD: Kynar, TEFC motor
TE-5S-MD: 316SS, TEFC motor



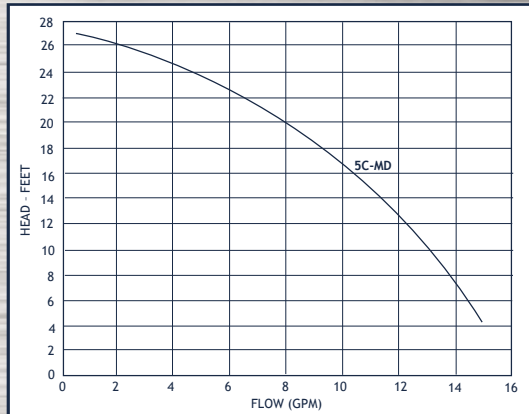
MARCH



5C/5K-MD Series

UP TO 14.5 GPM, 27' TDH

- Temperatures to 130 °F
- Open impeller
- 1" FPT x 1/2" MPT Ports
- Construction: Polypro
- Materials in contact with solution: Polypro, epoxy, 316SS, Buna, ceramic magnet and SJT cord
- Common models: (115 or 230 vac)
5C-MD: submersible only
LC-5C-MD: open air or submersible



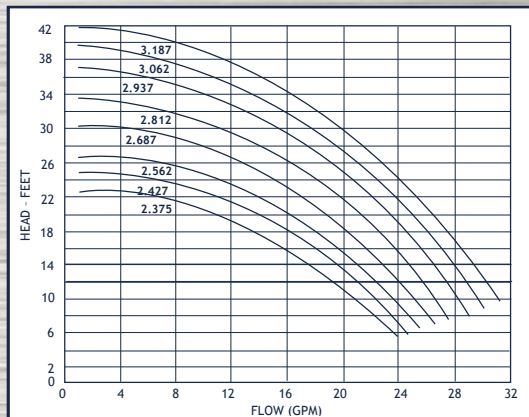
MARCH



LC-5C-MD Submersible Series

UP TO 30 GPM, 41' TDH

- Temperatures to 250 °F
- Closed impeller
- 1" FPT x 3/4" MPT ports
- Construction: Polypro, Kynar or 316SS
- Materials in contact with solution: housing material, ceramic and Viton® (5.5S has carbon bushing), single or three phase
- Common models:
TE-5.5C-MD: Polypro, TEFC motor
TE-5.5K-MD: Kynar, TEFC motor
TE-5.5S-MD: 316SS, TEFC motor



MARCH



TE-5.5 Series