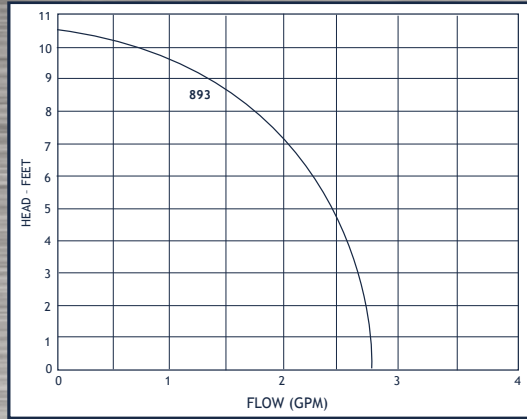


MAGNETIC DRIVE CENTRIFUGALS

MARCH



893 Series



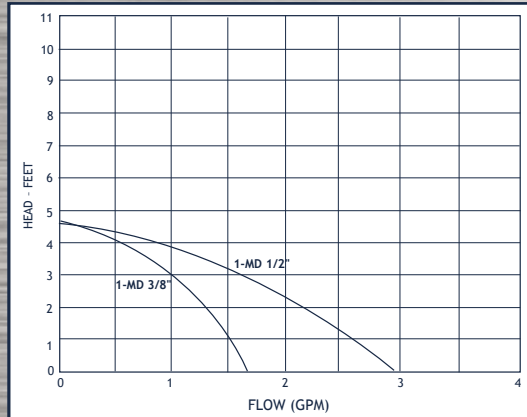
UP TO 2.7 GPM, 10.5' TDH

- Temperatures to 190° F for open motor, 160° F for submersible
- Ports: 3/8" female NPT inlet, 3/8" or 1/2" OD tubing outlet
- Noryl body and impeller
- 12 or 24 vdc
- Submersible or open air duty
- 893-07, 893-08 893-09 and 893-10 have brushless motors designed for 50,000 hours of life

MARCH



1A/1C/1U-MD Series



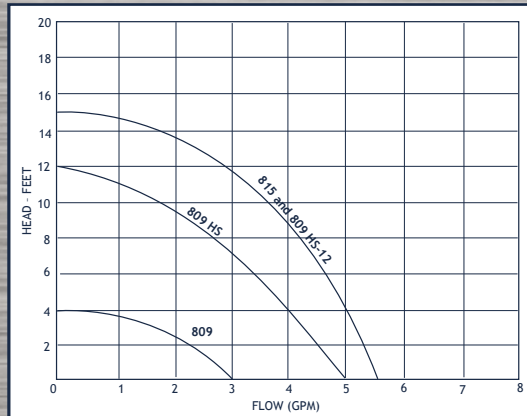
UP TO 3 GPM, 4.5' TDH

- Temperatures to 190° F for open motor, 160° F for submersible
- Ports: 1/2" OD tube, 3/8" OD tubing, or 1/4" NPT connections
- Construction: Polypropylene body, Nylon impeller
- Buna elastomers
- 115 vac, 50/60 hz motors
- Submersible or open air duty

MARCH



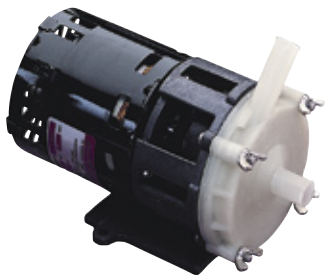
809 and 815 Series



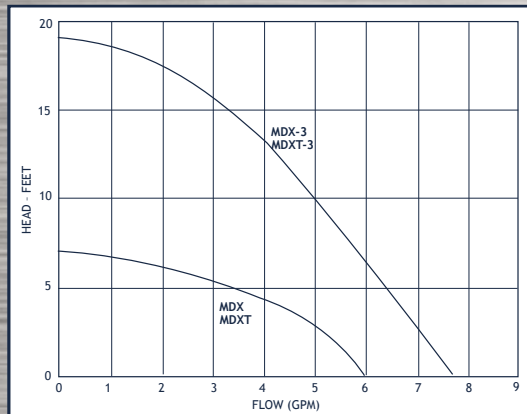
UP TO 5.5 GPM, 15' TDH

- Temperatures to 250° F
- Male NPT connections
- Bronze or Polysulfil bodies, 316SS spindles, silicone o-rings, Ryton® and Teflon® impellers
- Magnetic drive, hot water circulation design
- 115 vac 60 hz, 12 or 24 vdc

MARCH



MDX Series



UP TO 7.6 GPM, 26' TDH

- Temperatures to 200° F
- 1/2" or 5/8" OD tube; 3/8" NPT or 1/2" NPT connections
- Construction: Polypropylene, Ryton® or Kynar
- Buna or Viton® elastomers
- 115 or 230 vac, 50/60 hz motor
- Available with air motor drive