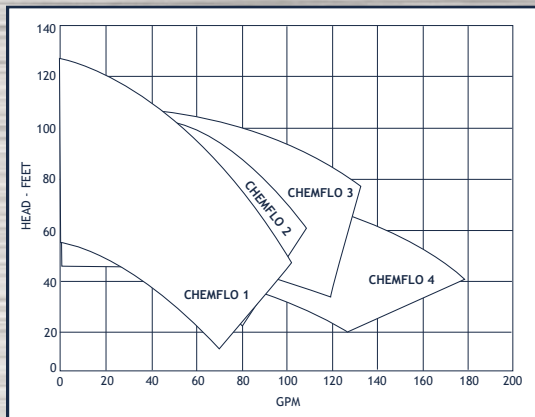


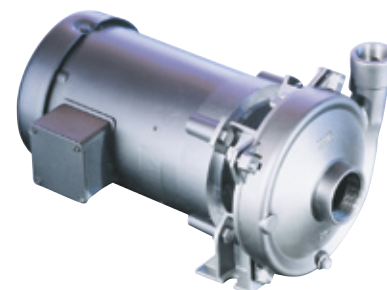
END SUCTION CENTRIFUGALS

UP TO 180 GPM, 130' TDH

- Investment cast 316SS or Nickel-Aluminum-Bronze
- Viton® seal and o-rings standard
- Semi-open impeller design
- Utilizes NEMA 56C motors
- Frame mounted option
- Many optional seals and elastomers available



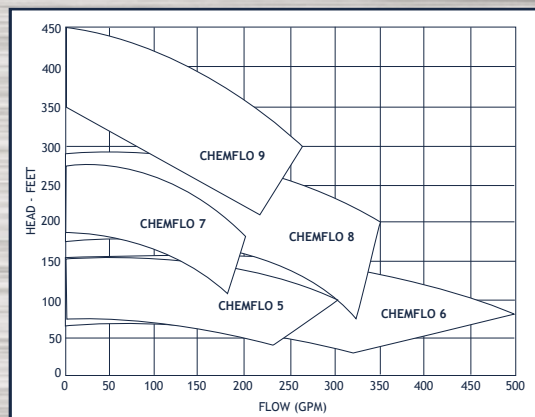
MP CHEMFLO



1, 2, 3 and 4 Series

UP TO 500 GPM, 450' TDH

- Investment cast 316SS
- Viton® seal and o-rings standard
- Semi-open impeller design
- Utilizes NEMA C-face motors
- Frame mounted options
- Many optional seals and elastomers available



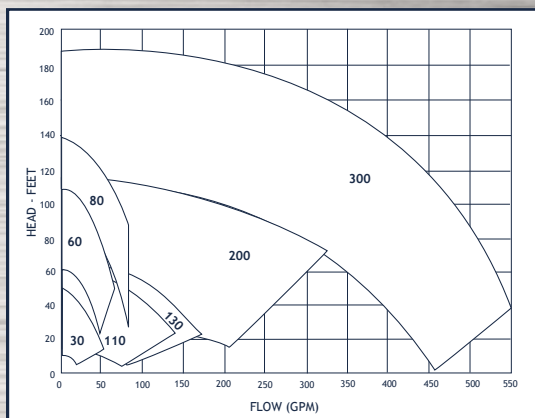
MP CHEMFLO



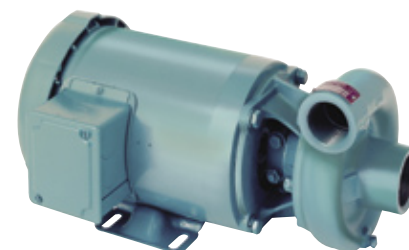
5, 6, 7, 8 and 9 Series

UP TO 550 GPM, 190' TDH

- Cast iron, bronze or cast iron/SS fitted construction
- Viton® mechanical seals standard
- Stainless steel shaft sleeves and fasteners
- Close coupled configurations mount directly to standard NEMA C-face motors
- Other mounting options include gas or diesel engine, bearing pedestal for direct or pulley drive, hydraulic, air, or DC clutch



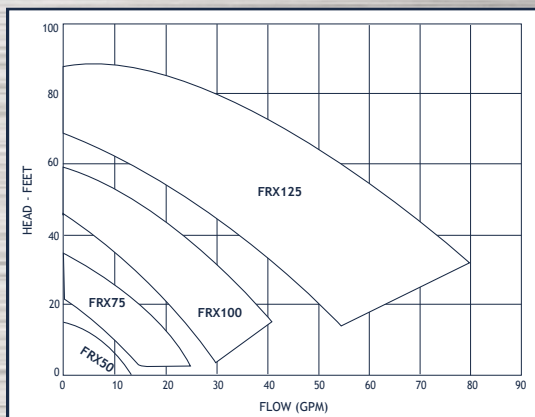
MP



30-300 Series

UP TO 78 GPM, 85' TDH

- 316SS or Ryton construction
- Close coupled mounting
- AC or DC motor options
- Carbon-ceramic-Viton® mechanical seal
- NPT connections, hose connections available on some sizes



MP



FRX Series