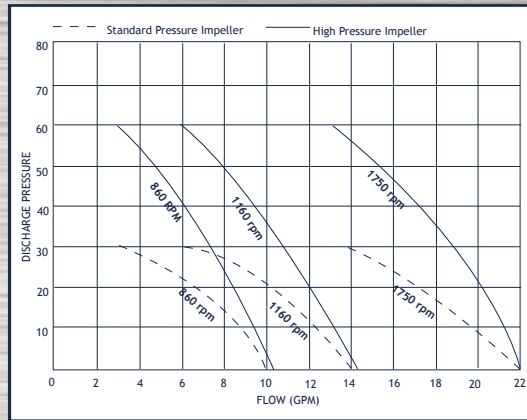


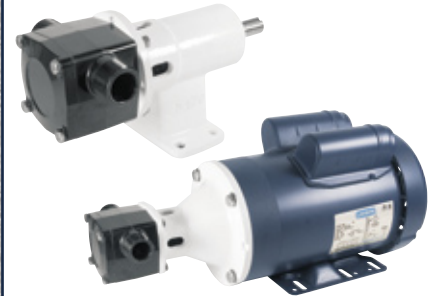
# 316SS AND EPOXY FLEXIBLE IMPELLER

## UP TO 22 GPM, 60 PSI

- Construction: Epoxy housing (no metal to liquid contact)
- Impeller Options: Neoprene, Nitrile, Viton or EPDM
- Mechanical Seal Options: Carbon/Ceramic, Tungsten Carbide/Ceramic
- Temperatures to 185°F
- Close coupled or Pedestal mount
- Mounting Options: NEMA, AC or DC motors, TEFC, washdown, or explosion proof enclosures, gear drive, variable speed drives, air motor and other custom configurations.



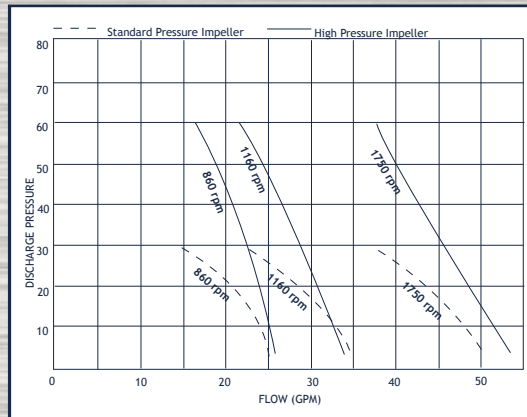
## JABSCO (EPOXY)



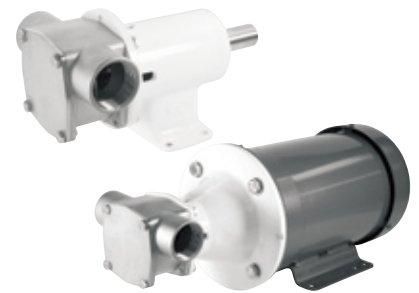
30520 Series (1")

## UP TO 50 GPM, 60 PSI

- Construction: 316SS
- Impeller Options: Neoprene, Nitrile, Viton® or EPDM
- Mechanical Seal Options: Carbon/Ceramic, Tungsten Carbide/Ceramic
- Temperatures to 185°F
- Close coupled or Pedestal mount
- Mounting Options: NEMA, AC or DC motors, TEFC, washdown, or explosion proof enclosures, gear drive, variable speed drives, air motor and other custom configurations.



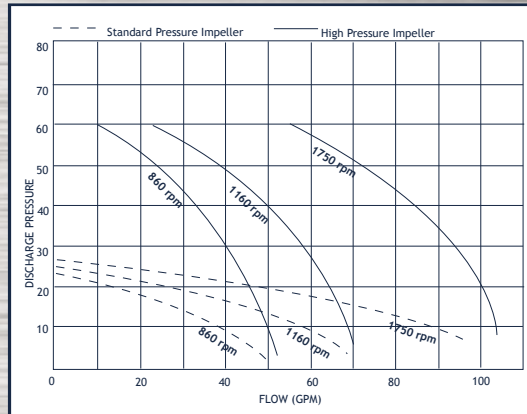
## JABSCO (316SS)



30530 Series (1 1/2")

## UP TO 100 GPM, 60 PSI

- Construction: 316SS
- Impeller Options: Neoprene, Nitrile, Viton® or EPDM
- Mechanical Seal Options: Carbon/Ceramic, Tungsten Carbide/Ceramic
- Temperatures to 185°F
- Pedestal mount
- Mounting Options: NEMA, AC or DC motors, TEFC, washdown, or explosion proof enclosures, gear drive, variable speed drives, air motor and other custom configurations.



## JABSCO (316SS)

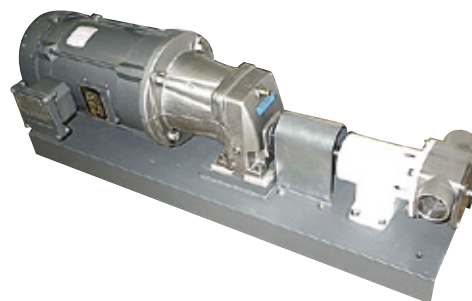


30540 Series (2")

## CUSTOM CONFIGURATIONS

- Cart, base and close-coupled
- Electric, pneumatic and hydraulic drive
- AC and DC voltages
- Open, TEFC and explosion proof drive
- Variable speed drives
- Gear reduction
- Channel steel, steel, stainless steel and aluminum base and cart materials

## JABSCO



Pedestal Mounting

## JABSCO



Cart Mounting