

# 316SS AND EPOXY FLEXIBLE IMPELLER

## JABSCO



Industrial FIP

## DRY SELF-PRIMING, SHEAR SENSITIVE, VISCOUS HANDLING PUMP

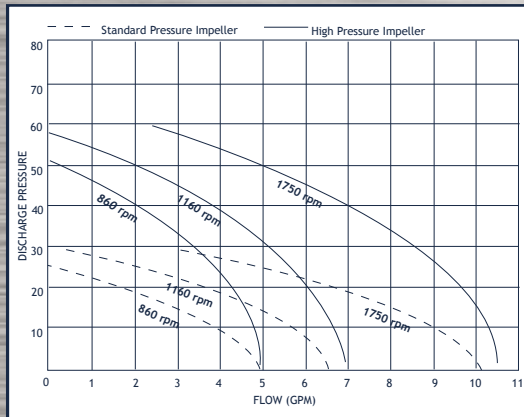
JabSCO's "New Generation" Flexible Impeller pump product platform can effectively handle thin or thick fluids that are air or particle laden. These pumps work on a very small footprint and are extremely easy and economical to maintain. Each size is equipped with a flexible impeller of Neoprene, Nitrile (Buna), EPDM, or Viton®. Sealing options are standard or hard-faced mechanical seals and are available in either C-face mounting or a bearing pedestal frame. Could be the most versatile and economical fluid handling alternative in the industry!

Viscosity CP	(Max rpm)	Viscosity CP	(Max rpm)	Viscosity CP	(Max rpm)
1	1750	800	1400	10000	450
10	1750	1000	1350	15000	330
100	1750	2000	950	20000	180
200	1610	3000	800	25000	150
400	1520	5000	670	50000	100

## JABSCO (316SS)



30510 Series (3/4")



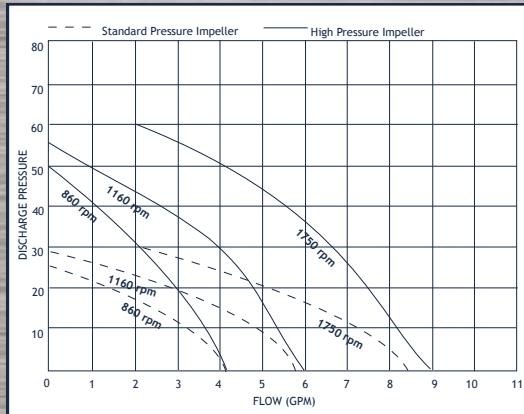
## UP TO 10 GPM, 60 PSI

- Construction: 316SS
- Impeller Options: Neoprene, Nitrile, Viton or EPDM
- Mechanical Seal Options: Carbon/Ceramic, Tungsten Carbide/Ceramic
- Temperatures to 185°F
- Close coupled or Pedestal mount
- Mounting Options: NEMA, AC or DC motors, TEFC, washdown, or explosion proof enclosures, gear drive, variable speed drives, air motor and other custom configurations.

## JABSCO (EPOXY)



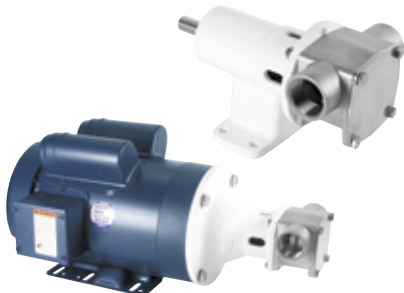
30510 Series (3/4")



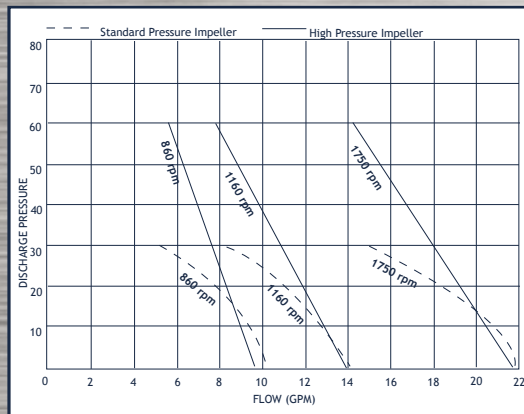
## UP TO 8 GPM, 60 PSI

- Construction: Epoxy housing (no metal to liquid contact)
- Impeller Options: Neoprene, Nitrile, Viton or EPDM
- Mechanical Seal Options: NEMA, Carbon/Ceramic, Tungsten Carbide/Ceramic
- Temperatures to 185°F
- Close coupled or Pedestal mount
- Mounting Options: NEMA, AC or DC motors, TEFC, washdown, or explosion proof enclosures, gear drive, variable speed drives, air motor and other custom configurations.

## JABSCO (316SS)



30520 Series (1")



## UP TO 20 GPM, 60 PSI

- Construction: 316SS
- Impeller Options: Neoprene, Nitrile, Viton® or EPDM
- Mechanical Seal Options: Carbon/Ceramic, Tungsten Carbide/Ceramic
- Temperatures to 185°F
- Close coupled or Pedestal mount
- Mounting Options: NEMA, AC or DC motors, TEFC, washdown, or explosion proof enclosures, gear drive, variable speed drives, air motor and other custom configurations.