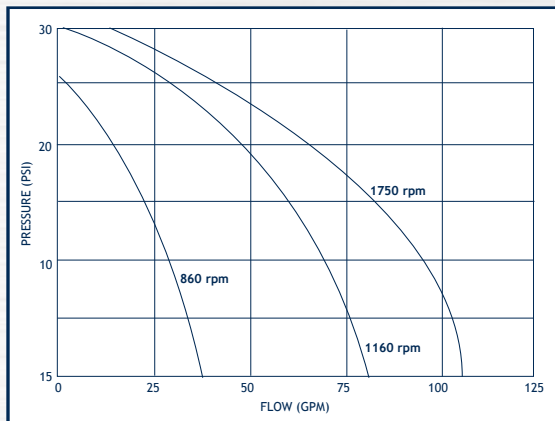


SANITARY PUMPS FOR ROAD TANKERS

UP TO 105 GPM, 30 PSI

- Specially designed as "Tanker Truck" pick-up pumps
- Meets 3A and USDA standards
- 2" ACME thread ports
- Electrically driven models displayed on previous page
- Hydraulic and pneumatically driven versions available
- 316SS construction with Neoprene impeller (EPDM, Buna and Viton® impeller option available)



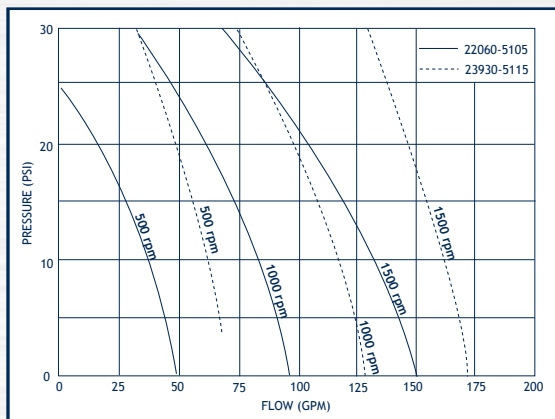
JABSCO Flexible Impeller



15170-7365 (Flange Mount)

UP TO 185 GPM, 30 PSI

- Specially designed as "Tanker Truck" pick-up pumps
- Meets 3A and USDA standards
- 2 1/2" ACME thread ports
- Electrically driven models displayed on previous page
- Hydraulic and pneumatically driven versions available
- 316SS construction with Neoprene impeller (EPDM, Buna and Viton® impeller option available)



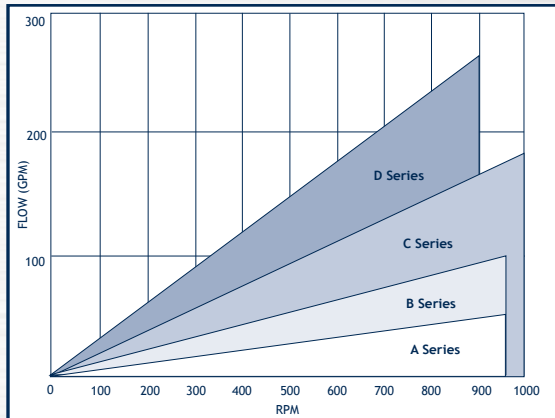
JABSCO Flexible Impeller



22060 and 23930 (Flange Mount)

UP TO 260 GPM, 217 PSI

- Meets 3A, USDA and FDA standards
- 316SS construction
- CIP capability
- Reversible
- 1 1/2" - 4" bolt on ports for all US and European standards including DIN, SMS, RJT, IDF, Tri-Clamp, ACME, NPT and BSP
- PTO and electrically driven versions available
- See page 129 for additional specs



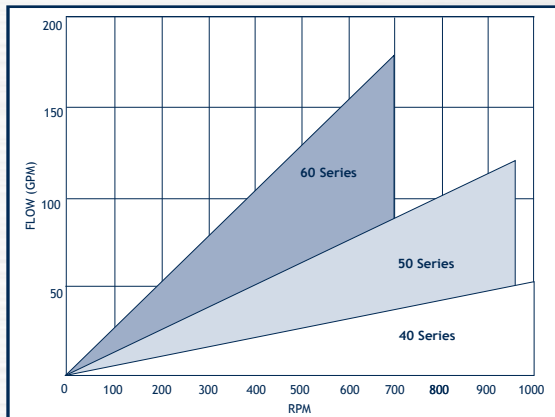
JABSCO Lobe



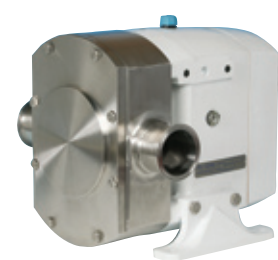
24 Series (Hydraulic Drive)

UP TO 180 GPM, 217 PSI

- Meets 3A, USDA and FDA standards
- 316SS construction
- CIP capability
- Reversible
- 1" - 4" bolt on ports for all US and European standards including DIN, SMS, RJT, IDF, Tri-Clamp, ACME, NPT and BSP
- PTO and electrically driven versions available
- See page 131 for additional specs



JABSCO Lobe



Hy-Line Series (Hydraulic Drive)