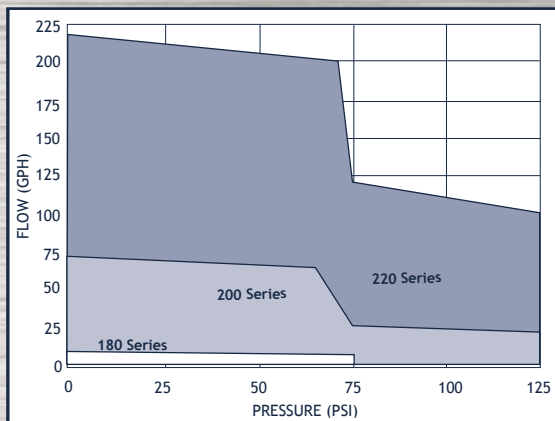


MAG DRIVE GEAR PUMPS

UP TO 220 GPH, 125 PSI

- 316SS, A-20, Titanium, Hastelloy® C, or Hastelloy® B body
- Gears available in PTFE, PPS or PEEK
- Ferrite magnet standard, upgrades available for high torque or high temperature applications
- Flooded suction required
- Mounting: available utilizing Micropump's integral drive or custom drive



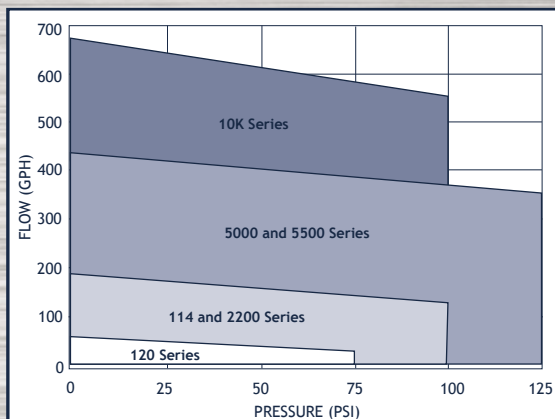
MICROPUMP



Suction Shoe Series

UP TO 680 GPH, 125 PSI

- 316SS, A-20, Titanium, Hastelloy® C, or Hastelloy® B body
- Gears available in PTFE, PPS or PEEK
- Ferrite magnet standard, upgrades available for high torque or high temperature applications
- Handles up to medium viscosities
- Suction lift to 10'
- Mounting: smaller sizes, integral or custom drive; larger sizes, custom drive only



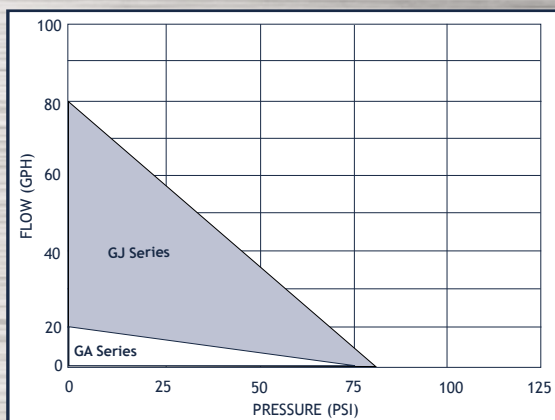
MICROPUMP



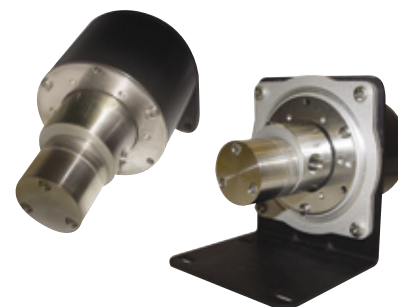
Conventional Gear Series

UP TO 78 GPH, 80 PSI

- 316SS, A-20, Titanium, Hastelloy® C, or Hastelloy® B body
- Gears available in PTFE, PPS or PEEK
- Ferrite magnet standard, upgrades available for high torque or high temperature applications
- Auto or manual adjustable speed drive, accepts most common control signals
- Input Voltages: 24 vdc, 36 vdc, 115 vac or 230 vac



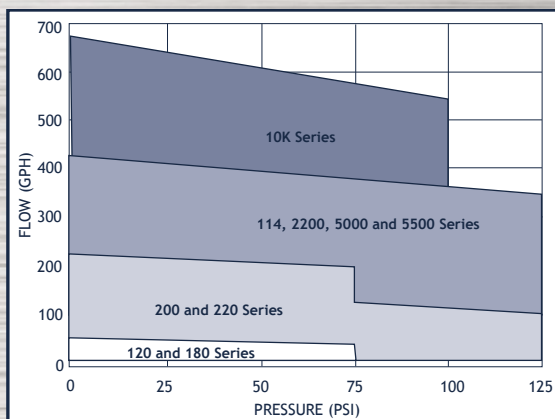
MICROPUMP



I-Drive

UP TO 680 GPH, 125 PSI

- 316SS, A-20, Titanium, Hastelloy® C, or Hastelloy® B body
- Gears available in PTFE, PPS or PEEK
- Ferrite magnet standard, upgrades available for high torque or high temperature applications
- Several elastomer options
- Mounting: NEMA C or IEC permit direct coupling of standard or custom electric or air motors



MICROPUMP



Custom Drive